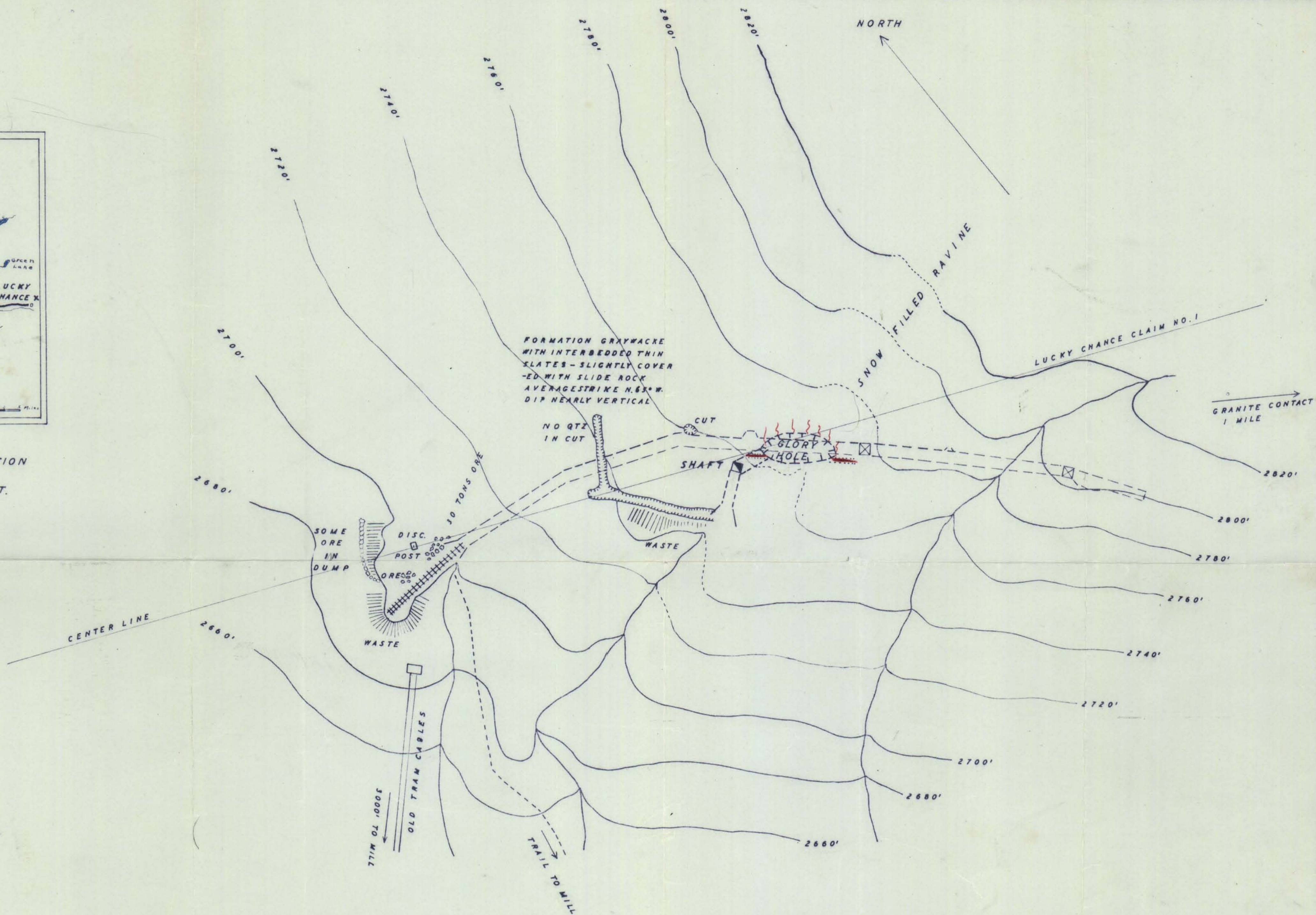


TERRITORIAL DEPARTMENT OF MINES
JUNEAU, ALASKA



SKETCH SHOWING LOCATION
LUCKY CHANCE MINE
SITKA MINING DIST.
ALASKA

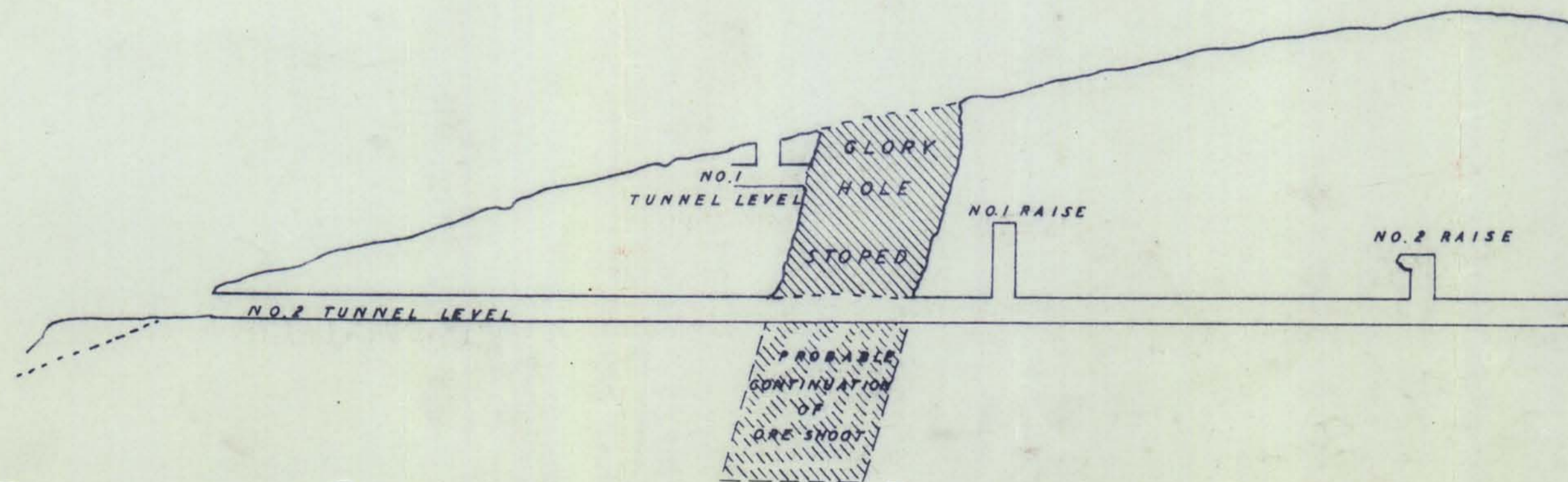


PLAN OF WORKINGS & TOPOGRAPHY

ASSAYS

SAMPLE NO.	LOCATION	DESCRIPTION	WIDTH	OUNCES PER TON	
				GOLD	SILVER
C-1	FACE OF CUT	QUARTZ & SLATE	6"	0.19	-
C-2	BACK OF DRIFT	ACROSS VEIN & MINERALIZED N-WALL	5"	1.72	-
C-3	BACK OF DRIFT &	ACROSS VEIN & N-WALL STRINGERS	14"	0.17	-
827	NO. 2 RAISE TOP	BANDED QUARTZ	4"	0.04	0.30
828	NO. 2 RAISE BOTTOM	" "	3"	0.02	0.98
829	FACE OF DRIFT	ACROSS VEIN	3' 4"	TRACE	0.40
830	BACK OF DRIFT	" "	18"	0.02	0.40

SAMPLES C-1-2-3 TAKEN BY
P. CHAMPAIGN - 1935



PROJECTION

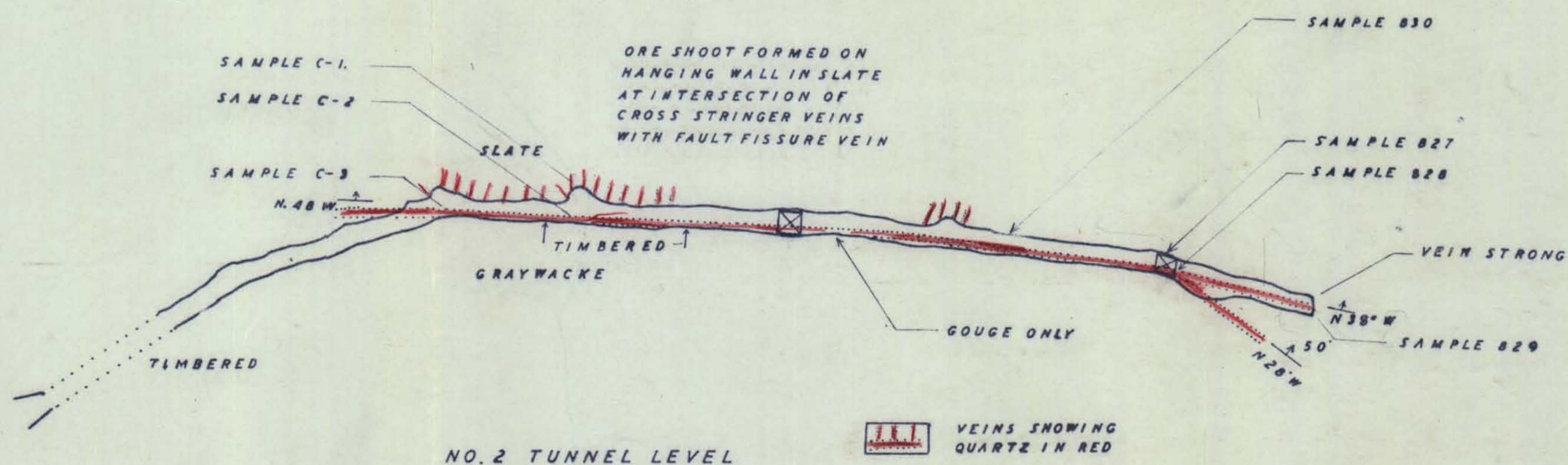
PLAN OF
LUCKY CHANCE MINE
BARANOF ISLAND
SITKA PRECINCT
ALASKA

JUNE 28, 1940

OWNER
STEVE TUS
SITKA, ALASKA

PLANE TABLE & ANEROID

SCALE
1" = 40'



NO. 2 TUNNEL LEVEL

PLAN BY,
J. C. ROEHM
ASSOCIATE ENGINEER