

Division of Geological & Geophysical Surveys

RAW DATA FILE 2013-10

**SPATIALLY REFERENCED OBLIQUE AERIAL IMAGERY OF THE  
PORT HEIDEN SHORELINE, AUGUST 2013**

by

Alexander I. Gould and Nicole E.M. Kinsman



Oblique aerial photograph looking east at the barge landing site near Old Meshik Townsite in Port Heiden, Alaska (photograph taken 8/15/2013 by A. Gould).

December 2013

Released by

STATE OF ALASKA  
DEPARTMENT OF NATURAL RESOURCES  
Division of Geological & Geophysical Surveys  
3354 College Rd.  
Fairbanks, Alaska 99709-3707



# SPATIALLY REFERENCED OBLIQUE AERIAL IMAGERY OF THE PORT HEIDEN SHORELINE, AUGUST 2013

by  
Alexander I. Gould<sup>1</sup> and Nicole E.M. Kinsman<sup>2</sup>

*This publication is funded with qualified outer continental shelf oil and gas revenues by the Coastal Impact Assistance Program, U.S. Fish & Wildlife Service, U.S. Department of the Interior. The views and conclusions contained in this document are those of the authors and should not be interpreted as representing the opinions or policies of the U.S. Government. Mention of trade names or commercial products does not constitute their endorsement by the U.S. Government.*

## ABSTRACT

---

In August 2013, a helicopter-based crew photographed approximately 52 miles (84 km) of shoreline near Port Heiden, Alaska, from 7 miles (11 km) northeast of Reindeer Creek, known locally as North Creek, to 10 miles (16 km) southwest of Strogonof Point. During this flight, 1,441 oblique aerial photographs were collected and were spatially referenced using a Garmin Dakota 20 handheld GPS. For a complete description of the image collection and file organization process please see the detailed metadata associated with this Raw Data File.

## DESCRIPTION OF OVERVIEW FIGURE

---

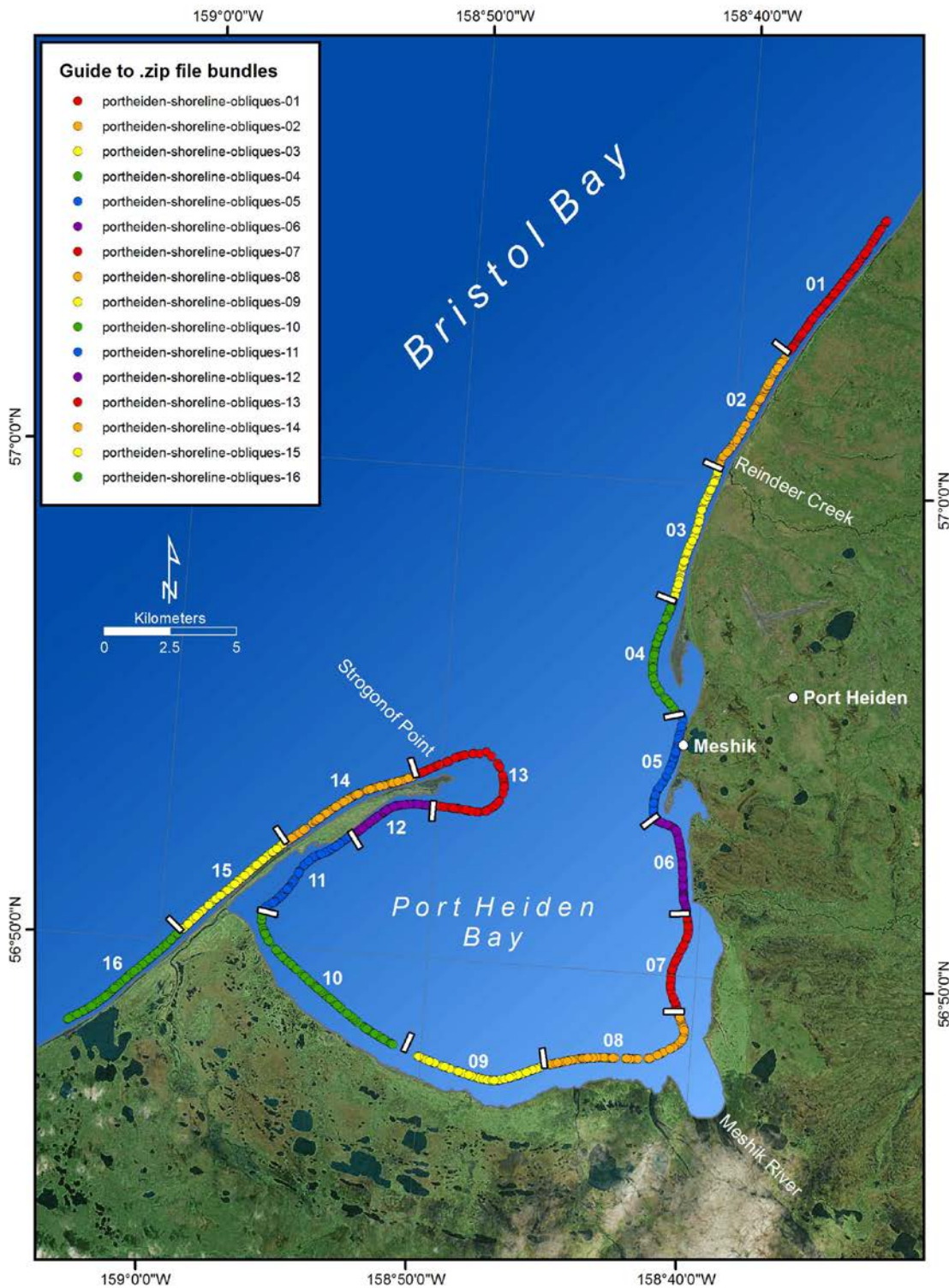
For ease of use, the oblique aerial photographs are grouped into 16 separate .zip file downloads. The image groups are each composed of approximately 90 photographs, divided by position along the shoreline. Specific image file names and image file groups are listed in the provided point shapefile. Photography of Meshik, the old community site near Goldfish Lake, can be found in the image group Port Heiden-2013-Folder 05.

**For quick reference, or for users without access to GIS software, figure 1 on the following page illustrates the geospatial location of the photographs in each .zip file bundle.**

---

<sup>1</sup> Alaska Division of Geological & Geophysical Surveys, 3354 College Rd., Fairbanks, Alaska 99709-3707; alexander.gould@alaska.gov

<sup>2</sup> Alaska Division of Geological & Geophysical Surveys, 3354 College Rd., Fairbanks, Alaska 99709-3707; nicole.kinsman@alaska.gov



**Figure 1.** Locations of the 1,441 photographs included in this report. Each numbered segment of the flight path corresponds to the .zip file bundle containing images for that portion of shoreline. The base layer is a mosaic of simulated true color Landsat satellite imagery (2000).