



DESCRIPTION OF MAP UNITS

UNCONSOLIDATED DEPOSITS

Fluvial Deposits

Qa FLOODPLAIN ALLUVIUM—Bergate deposits of pebble-cobble gravel and sand with a few to numerous boulders beneath modern floodplain, well-sorted and medium to thick bedded, locally cross-bedded; surface smooth, except for local low scarp

Qaf ALLUVIAL-FAN DEPOSITS—Fan-shaped, heterogeneous mixtures of pebble-cobble gravel with some sand and silt and low to numerous, subangular to rounded boulders; thick to thin bedded, surface smooth, except for numerous shallow, interconnected channels

Qat TERRACE ALLUVIUM—Bergate deposits of pebble-cobble gravel and sand with trace to some silt and rare to numerous boulders comprising stream terraces bordering modern floodplains; includes steepland terraces; higher, older terraces are covered with 2–5 m of undifferentiated colluvium, surface smooth, except for local low scarp

Colluvial Deposits

Qc UNDIFFERENTIATED COLLUVIUM—Irregular, heterogeneous blankets, aprons, and fans of angular to subangular rock fragments, gravel, sand, and silt up to 3 m thick that are left on slopes or at slope bases by residual weathering and complex mass-movement processes, including rolling, sliding, flowing, gulping, and frost creep; locally washed by meltwater and slope runoff; medium to thick bedded; surface smooth, lobate or terraced, and generally reflects configuration of underlying bedrock surface

Qcl UNDIFFERENTIATED COLLUVIUM AND ALLUVIUM—Fan-shaped and elongate, heterogeneous mixtures of subangular rock fragments and pebble-cobble gravel with some sand and silt deposited in upper stream courses primarily by debris flows, gulping, and frost creep; intense stream erosion; surface smooth, except for local low scarp and shallow, steep-sided channels

Glacial Deposits

Qd MODIFIED DEPT OF MASTODON DOME GLACIATION—Heterogeneous blankets of pebble-cobble gravel with trace to some sand and silt and few to numerous boulders deposited directly from glacial ice and reworked by mass-movement processes; locally sorted into dikes and ruts (spaced irregularly) by frost action; massive bedded, surface smooth to slightly irregular, lobed, and terraced

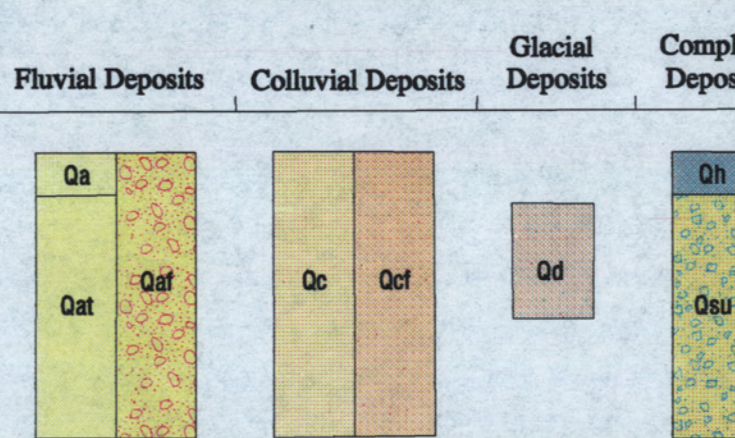
Complex Deposits

Qh MAN-MADE DEPOSITS, PRIMARILY PLACER-MINE TAILINGS—Water-washed pebble-cobble gravel with trace to some sand; moderate to well-sorted; surface irregular or forming symmetrical ridges and cones

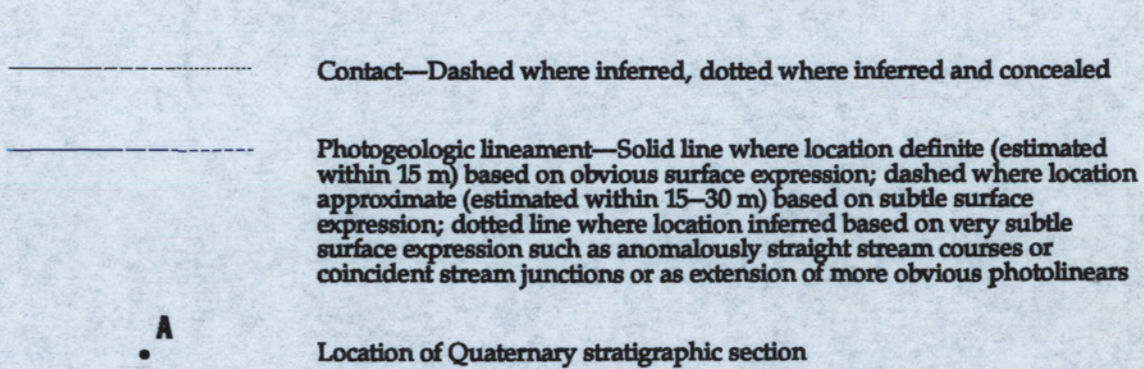
Qns UNDIFFERENTIATED PEAT AND ORGANIC SILT—Heterogeneous blankets, aprons, and fans of peat and organic silt laid down by fluvial, colluvial, and glacial processes; probably pervasively frozen and locally ice rich; surface smooth to locally pitted and gullied by melting of ice-rich permafrost

CORRELATION OF MAP UNITS

UNCONSOLIDATED DEPOSITS



EXPLANATION OF MAP SYMBOLS



Base modified from portions of U.S. Geological Survey maps 6-2 (1951), 6-3 (1951), 6-4 (1951), 6-5 (1951), 6-6 (1951), 6-7 (1951), 6-8 (1951), 6-9 (1951), 6-10 (1951), 6-11 (1951), 6-12 (1951), 6-13 (1951), 6-14 (1951), 6-15 (1951), 6-16 (1951), 6-17 (1951), 6-18 (1951), 6-19 (1951), 6-20 (1951), 6-21 (1951), 6-22 (1951), 6-23 (1951), 6-24 (1951), 6-25 (1951), 6-26 (1951), 6-27 (1951), 6-28 (1951), 6-29 (1951), 6-30 (1951), 6-31 (1951), 6-32 (1951), 6-33 (1951), 6-34 (1951), 6-35 (1951), 6-36 (1951), 6-37 (1951), 6-38 (1951), 6-39 (1951), 6-40 (1951), 6-41 (1951), 6-42 (1951), 6-43 (1951), 6-44 (1951), 6-45 (1951), 6-46 (1951), 6-47 (1951), 6-48 (1951), 6-49 (1951), 6-50 (1951), 6-51 (1951), 6-52 (1951), 6-53 (1951), 6-54 (1951), 6-55 (1951), 6-56 (1951), 6-57 (1951), 6-58 (1951), 6-59 (1951), 6-60 (1951), 6-61 (1951), 6-62 (1951), 6-63 (1951), 6-64 (1951), 6-65 (1951), 6-66 (1951), 6-67 (1951), 6-68 (1951), 6-69 (1951), 6-70 (1951), 6-71 (1951), 6-72 (1951), 6-73 (1951), 6-74 (1951), 6-75 (1951), 6-76 (1951), 6-77 (1951), 6-78 (1951), 6-79 (1951), 6-80 (1951), 6-81 (1951), 6-82 (1951), 6-83 (1951), 6-84 (1951), 6-85 (1951), 6-86 (1951), 6-87 (1951), 6-88 (1951), 6-89 (1951), 6-90 (1951), 6-91 (1951), 6-92 (1951), 6-93 (1951), 6-94 (1951), 6-95 (1951), 6-96 (1951), 6-97 (1951), 6-98 (1951), 6-99 (1951), 6-100 (1951), 6-101 (1951), 6-102 (1951), 6-103 (1951), 6-104 (1951), 6-105 (1951), 6-106 (1951), 6-107 (1951), 6-108 (1951), 6-109 (1951), 6-110 (1951), 6-111 (1951), 6-112 (1951), 6-113 (1951), 6-114 (1951), 6-115 (1951), 6-116 (1951), 6-117 (1951), 6-118 (1951), 6-119 (1951), 6-120 (1951), 6-121 (1951), 6-122 (1951), 6-123 (1951), 6-124 (1951), 6-125 (1951), 6-126 (1951), 6-127 (1951), 6-128 (1951), 6-129 (1951), 6-130 (1951), 6-131 (1951), 6-132 (1951), 6-133 (1951), 6-134 (1951), 6-135 (1951), 6-136 (1951), 6-137 (1951), 6-138 (1951), 6-139 (1951), 6-140 (1951), 6-141 (1951), 6-142 (1951), 6-143 (1951), 6-144 (1951), 6-145 (1951), 6-146 (1951), 6-147 (1951), 6-148 (1951), 6-149 (1951), 6-150 (1951), 6-151 (1951), 6-152 (1951), 6-153 (1951), 6-154 (1951), 6-155 (1951), 6-156 (1951), 6-157 (1951), 6-158 (1951), 6-159 (1951), 6-160 (1951), 6-161 (1951), 6-162 (1951), 6-163 (1951), 6-164 (1951), 6-165 (1951), 6-166 (1951), 6-167 (1951), 6-168 (1951), 6-169 (1951), 6-170 (1951), 6-171 (1951), 6-172 (1951), 6-173 (1951), 6-174 (1951), 6-175 (1951), 6-176 (1951), 6-177 (1951), 6-178 (1951), 6-179 (1951), 6-180 (1951), 6-181 (1951), 6-182 (1951), 6-183 (1951), 6-184 (1951), 6-185 (1951), 6-186 (1951), 6-187 (1951), 6-188 (1951), 6-189 (1951), 6-190 (1951), 6-191 (1951), 6-192 (1951), 6-193 (1951), 6-194 (1951), 6-195 (1951), 6-196 (1951), 6-197 (1951), 6-198 (1951), 6-199 (1951), 6-200 (1951), 6-201 (1951), 6-202 (1951), 6-203 (1951), 6-204 (1951), 6-205 (1951), 6-206 (1951), 6-207 (1951), 6-208 (1951), 6-209 (1951), 6-210 (1951), 6-211 (1951), 6-212 (1951), 6-213 (1951), 6-214 (1951), 6-215 (1951), 6-216 (1951), 6-217 (1951), 6-218 (1951), 6-219 (1951), 6-220 (1951), 6-221 (1951), 6-222 (1951), 6-223 (1951), 6-224 (1951), 6-225 (1951), 6-226 (1951), 6-227 (1951), 6-228 (1951), 6-229 (1951), 6-230 (1951), 6-231 (1951), 6-232 (1951), 6-233 (1951), 6-234 (1951), 6-235 (1951), 6-236 (1951), 6-237 (1951), 6-238 (1951), 6-239 (1951), 6-240 (1951), 6-241 (1951), 6-242 (1951), 6-243 (1951), 6-244 (1951), 6-245 (1951), 6-246 (1951), 6-247 (1951), 6-248 (1951), 6-249 (1951), 6-250 (1951), 6-251 (1951), 6-252 (1951), 6-253 (1951), 6-254 (1951), 6-255 (1951), 6-256 (1951), 6-257 (1951), 6-258 (1951), 6-259 (1951), 6-260 (1951), 6-261 (1951), 6-262 (1951), 6-263 (1951), 6-264 (1951), 6-265 (1951), 6-266 (1951), 6-267 (1951), 6-268 (1951), 6-269 (1951), 6-270 (1951), 6-271 (1951), 6-272 (1951), 6-273 (1951), 6-274 (1951), 6-275 (1951), 6-276 (1951), 6-277 (1951), 6-278 (1951), 6-279 (1951), 6-280 (1951), 6-281 (1951), 6-282 (1951), 6-283 (1951), 6-284 (1951), 6-285 (1951), 6-286 (1951), 6-287 (1951), 6-288 (1951), 6-289 (1951), 6-290 (1951), 6-291 (1951), 6-292 (1951), 6-293 (1951), 6-294 (1951), 6-295 (1951), 6-296 (1951), 6-297 (1951), 6-298 (1951), 6-299 (1951), 6-300 (1951), 6-301 (1951), 6-302 (1951), 6-303 (1951), 6-304 (1951), 6-305 (1951), 6-306 (1951), 6-307 (1951), 6-308 (1951), 6-309 (1951), 6-310 (1951), 6-311 (1951), 6-312 (1951), 6-313 (1951), 6-314 (1951), 6-315 (1951), 6-316 (1951), 6-317 (1951), 6-318 (1951), 6-319 (1951), 6-320 (1951), 6-321 (1951), 6-322 (1951), 6-323 (1951), 6-324 (1951), 6-325 (1951), 6-326 (1951), 6-327 (1951), 6-328 (1951), 6-329 (1951), 6-330 (1951), 6-331 (1951), 6-332 (1951), 6-333 (1951), 6-334 (1951), 6-335 (1951), 6-336 (1951), 6-337 (1951), 6-338 (1951), 6-339 (1951), 6-340 (1951), 6-341 (1951), 6-342 (1951), 6-343 (1951), 6-344 (1951), 6-345 (1951), 6-346 (1951), 6-347 (1951), 6-348 (1951), 6-349 (1951), 6-350 (1951), 6-351 (1951), 6-352 (1951), 6-353 (1951), 6-354 (1951), 6-355 (1951), 6-356 (1951), 6-357 (1951), 6-358 (1951), 6-359 (1951), 6-360 (1951), 6-361 (1951), 6-362 (1951), 6-363 (1951), 6-364 (1951), 6-365 (1951), 6-366 (1951), 6-367 (1951), 6-368 (1951), 6-369 (1951), 6-370 (1951), 6-371 (1951), 6-372 (1951), 6-373 (1951), 6-374 (1951), 6-375 (1951), 6-376 (1951), 6-377 (1951), 6-378 (1951), 6-379 (1951), 6-380 (1951), 6-381 (1951), 6-382 (1951), 6-383 (1951), 6-384 (1951), 6-385 (1951), 6-386 (1951), 6-387 (1951), 6-388 (1951), 6-389 (1951), 6-390 (1951), 6-391 (1951), 6-392 (1951), 6-393 (1951), 6-394 (1951), 6-395 (1951), 6-396 (1951), 6-397 (1951), 6-398 (1951), 6-399 (1951), 6-400 (1951), 6-401 (1951), 6-402 (1951), 6-403 (1951), 6-404 (1951), 6-405 (1951), 6-406 (1951), 6-407 (1951), 6-408 (1951), 6-409 (1951), 6-410 (1951), 6-411 (1951), 6-412 (1951), 6-413 (1951), 6-414 (1951), 6-415 (1951), 6-416 (1951), 6-417 (1951), 6-418 (1951), 6-419 (1951), 6-420 (1951), 6-421 (1951), 6-422 (1951), 6-423 (1951), 6-424 (1951), 6-425 (1951), 6-426 (1951), 6-427 (1951), 6-428 (1951), 6-429 (1951), 6-430 (1951), 6-431 (1951), 6-432 (1951), 6-433 (1951), 6-434 (1951), 6-435 (1951), 6-436 (1951), 6-437 (1951), 6-438 (1951), 6-439 (1951), 6-440 (1951), 6-441 (1951), 6-442 (1951), 6-443 (1951), 6-444 (1951), 6-445 (1951), 6-446 (1951), 6-447 (1951), 6-448 (1951), 6-449 (1951), 6-450 (1951), 6-451 (1951), 6-452 (1951), 6-453 (1951), 6-454 (1951), 6-455 (1951), 6-456 (1951), 6-457 (1951), 6-458 (1951), 6-459 (1951), 6-460 (1951), 6-461 (1951), 6-462 (1951), 6-463 (1951), 6-464 (1951), 6-465 (1951), 6-466 (1951), 6-467 (1951), 6-468 (1951), 6-469 (1951), 6-470 (1951), 6-471 (1951), 6-472 (1951), 6-473 (1951), 6-474 (1951), 6-475 (1951), 6-476 (1951), 6-477 (1951), 6-478 (1951), 6-479 (1951), 6-480 (1951), 6-481 (1951), 6-482 (1951), 6-483 (1951), 6-484 (1951), 6-485 (1951), 6-486 (1951), 6-487 (1951), 6-488 (1951), 6-489 (1951), 6-490 (1951), 6-491 (1951), 6-492 (1951), 6-493 (1951), 6-494 (1951), 6-495 (1951), 6-496 (1951), 6-497 (1951), 6-498 (1951), 6-499 (1951), 6-500 (1951), 6-501 (1951), 6-502 (1951), 6-503 (1951), 6-504 (1951), 6-505 (1951), 6-506 (1951), 6-507 (1951), 6-508 (1951), 6-509 (1951), 6-510 (1951), 6-511 (1951), 6-512 (1951), 6-513 (1951), 6-514 (1951), 6-515 (1951), 6-516 (1951), 6-517 (1951), 6-518 (1951), 6-519 (1951), 6-520 (1951), 6-521 (1951), 6-522 (1951), 6-523 (1951), 6-524 (1951), 6-525 (1951), 6-526 (1951), 6-527 (1951), 6-528 (1951), 6-529 (1951), 6-530 (1951), 6-531 (1951), 6-532 (1951), 6-533 (1951), 6-534 (1951), 6-535 (1951), 6-536 (1951), 6-537 (1951), 6-538 (1951), 6-539 (1951), 6-540 (1951), 6-541 (1951), 6-542 (1951), 6-543 (1951), 6-544 (1951), 6-545 (1951), 6-546 (1951), 6-547 (1951), 6-548 (1951), 6-549 (1951), 6-550 (1951), 6-551 (1951), 6-552 (1951), 6-553 (1951), 6-554 (1951), 6-555 (1951), 6-556 (1951), 6-557 (1951), 6-558 (1951), 6-559 (1951), 6-560 (1951), 6-561 (1951), 6-562 (1951), 6-563 (1951), 6-564 (1951), 6-565 (1951), 6-566 (1951), 6-567 (1951), 6-568 (1951), 6-569 (1951), 6-570 (1951), 6-571 (1951), 6-572 (1951), 6-573 (1951), 6-574 (1951), 6-575 (1951), 6-576 (1951), 6-577 (1951), 6-578 (1951), 6-579 (1951), 6-580 (1951), 6-581 (1951), 6-582 (1951), 6-583 (1951), 6-584 (1951), 6-585 (1951), 6-586 (1951), 6-587 (1951), 6-588 (1951), 6-589 (1951), 6-590 (1951), 6-591 (1951), 6-592 (1951), 6-593 (1951), 6-594 (1951), 6-595 (1951), 6-596 (1951), 6-597 (1951), 6-598 (1951), 6-599 (1951), 6-600 (1951), 6-601 (1951), 6-602 (1951), 6-603 (1951), 6-604 (1951), 6-605 (1951), 6-606 (1951), 6-607 (1951), 6-608 (1951), 6-609 (1951), 6-610 (1951), 6-611 (1951), 6-612 (1951), 6-613 (1951), 6-614 (1951), 6-615 (1951), 6-616 (1951), 6-617 (1951), 6-618 (1951), 6-619 (1951), 6-620 (1951), 6-621 (1951), 6-622 (1951), 6-623 (1951), 6-624 (1951), 6-625 (1951), 6-626 (1951), 6-627 (1951), 6-628 (1951), 6-629 (1951), 6-630 (1951), 6-631 (1951), 6-632 (1951), 6-633 (1951), 6-634 (1951), 6-635 (1951), 6-636 (1951), 6-637 (1951), 6-638 (1951), 6-639 (1951), 6-640 (1951), 6-641 (1951), 6-642 (1951), 6-643 (1951), 6-644 (1951), 6-645 (1951), 6-646 (1951), 6-647 (1951), 6-648 (1951), 6-649 (1951), 6-650 (1951), 6-651 (1951), 6-652 (1951), 6-653 (1951), 6-654 (1951), 6-655 (1951), 6-656 (1951), 6-657 (1951), 6-658 (1951), 6-659 (1951), 6-660 (1951), 6-661 (1951), 6-662 (1951), 6-663 (1951), 6-664 (1951), 6-665 (1951), 6-666 (1951), 6-667 (1951), 6-668 (1951), 6-669 (1951), 6-670 (1951), 6-671 (1951), 6-672 (1951), 6-673 (1951), 6-674 (1951), 6-675 (1951), 6-676 (1951), 6-677 (1951), 6-678 (1951), 6-679 (1951), 6-680 (1951), 6-681 (1951), 6-682 (1951), 6-683 (1951), 6-684 (1951), 6-685 (1951), 6-686 (1951), 6-687 (1951), 6-688 (1951), 6-689 (1951), 6-690 (1951), 6-691 (1951), 6-692 (1951), 6-693 (1951), 6-694 (1951), 6-695 (1951), 6-696 (1951), 6-697 (1951), 6-698 (1951), 6-699 (1951), 6-700 (1951), 6-701 (1951), 6-702 (1951), 6-703 (1951), 6-704 (1951), 6-705 (1951), 6-706 (1951), 6-707 (1951), 6-708 (1951), 6-709 (1951), 6-710 (1951), 6-711 (1951), 6-712 (1951), 6-713 (1951), 6-714 (1951), 6-715 (1951), 6-716 (1951), 6-717 (1951), 6-718 (1951), 6-719 (1951), 6-720 (1951), 6-721 (1951), 6-722 (1951), 6-723 (1951), 6-724 (1951), 6-725 (1951), 6-726 (1951), 6-727 (1951), 6-728 (1951), 6-729 (1951), 6-730 (1951), 6-731 (1951), 6-732 (1951), 6-733 (1951), 6-734 (1951), 6-735 (1951), 6-736 (1951), 6-737 (1951), 6-738 (1951), 6-739 (1951), 6-740 (1951), 6-741 (1951), 6-742 (1951), 6-743 (1951), 6-744 (1951), 6-745 (1951), 6-746 (1951), 6-747 (1951), 6-748 (1951), 6-749 (1951), 6-750 (1951), 6-751 (1951), 6-752 (1951), 6-753 (1951), 6-754 (1951), 6-755 (1951), 6-756 (1951), 6-757 (1951), 6-758 (1951), 6-759 (1951), 6-760 (1951), 6-761 (1951), 6-762 (1951), 6-763 (1951), 6-764 (1951), 6-765 (1951), 6-766 (1951), 6-767 (1951), 6-768 (1951), 6-769 (1951), 6-770 (1951), 6-771 (1951), 6-772 (1951), 6-773 (1951), 6-774 (1951), 6-775 (1951), 6-776 (1951), 6-777 (1951), 6-778 (1951), 6-779 (1951), 6-780 (1951), 6-781 (1951), 6-782 (1951), 6-783 (1951), 6-784 (1951), 6-785 (1951), 6-786 (1951), 6-787 (1951), 6-788 (1951), 6-789 (1951), 6-790 (1951), 6-791 (1951), 6-792 (1951), 6-793 (1951), 6-794 (1951), 6-795 (1951), 6-796 (1951), 6-797 (1951), 6-798 (1951), 6-799 (1951), 6-800 (1951), 6-801 (1951), 6-802 (1951), 6-803 (1951), 6-804 (1951), 6-805 (1951), 6-806 (1951), 6-807 (1951), 6-808 (1951), 6-809 (1951), 6-810 (1951), 6-811 (1951), 6-812 (1951), 6-813 (1951), 6-814 (1951), 6-815 (1951), 6-816 (1951), 6-817 (1951), 6-818 (1951), 6-819 (1951), 6-820 (1951), 6-821 (1951), 6-822 (1951), 6-823 (1951), 6-824 (1951), 6-825 (1951), 6-826 (1951), 6-827 (1951), 6-828 (1951), 6-829 (1951), 6-830 (1951), 6-831 (1951), 6-832 (1951), 6-833 (1951), 6-834 (1951), 6-835 (1951), 6-836 (1951), 6-837 (1951), 6-838 (1951), 6-839 (1951), 6-840 (1951), 6-841 (1951), 6-842 (1951), 6-843 (1951), 6-844 (1951), 6-845 (1951), 6-846 (1951), 6-847 (1951), 6-848 (1951), 6-849 (1951), 6-850 (1951), 6-851 (1951), 6-852 (1951), 6-853 (1951), 6-854 (1951), 6-855 (1951), 6-856 (1951), 6-857 (1951), 6-858 (1951), 6-859 (1951), 6-860 (1951), 6-861 (1951), 6-862 (1951), 6-863 (1951), 6-864 (1951), 6-865 (1951), 6-866 (1951), 6-867 (1951), 6-868 (1951), 6-869 (1951), 6-870 (1951), 6-871 (1951), 6-872 (1951), 6-873 (1951), 6-874 (1951), 6-875 (1951), 6-876 (1951), 6-877 (1951), 6-878 (1951), 6-879 (1951), 6-880 (1951), 6-881 (1951), 6-882 (1951), 6-883 (1951), 6-884 (1951), 6-885 (1951), 6-886 (1951), 6-887 (1951), 6-888 (1951), 6-889 (1951), 6-890 (1951), 6-891 (1951), 6-892 (1951), 6-893 (1951), 6-894 (1951), 6-895 (1951), 6-896 (1951), 6-897 (1951), 6-898 (1951), 6-899 (1951), 6-900 (1951), 6-901 (1951), 6-902 (1951), 6-903 (1951), 6-904 (1951), 6-905 (19