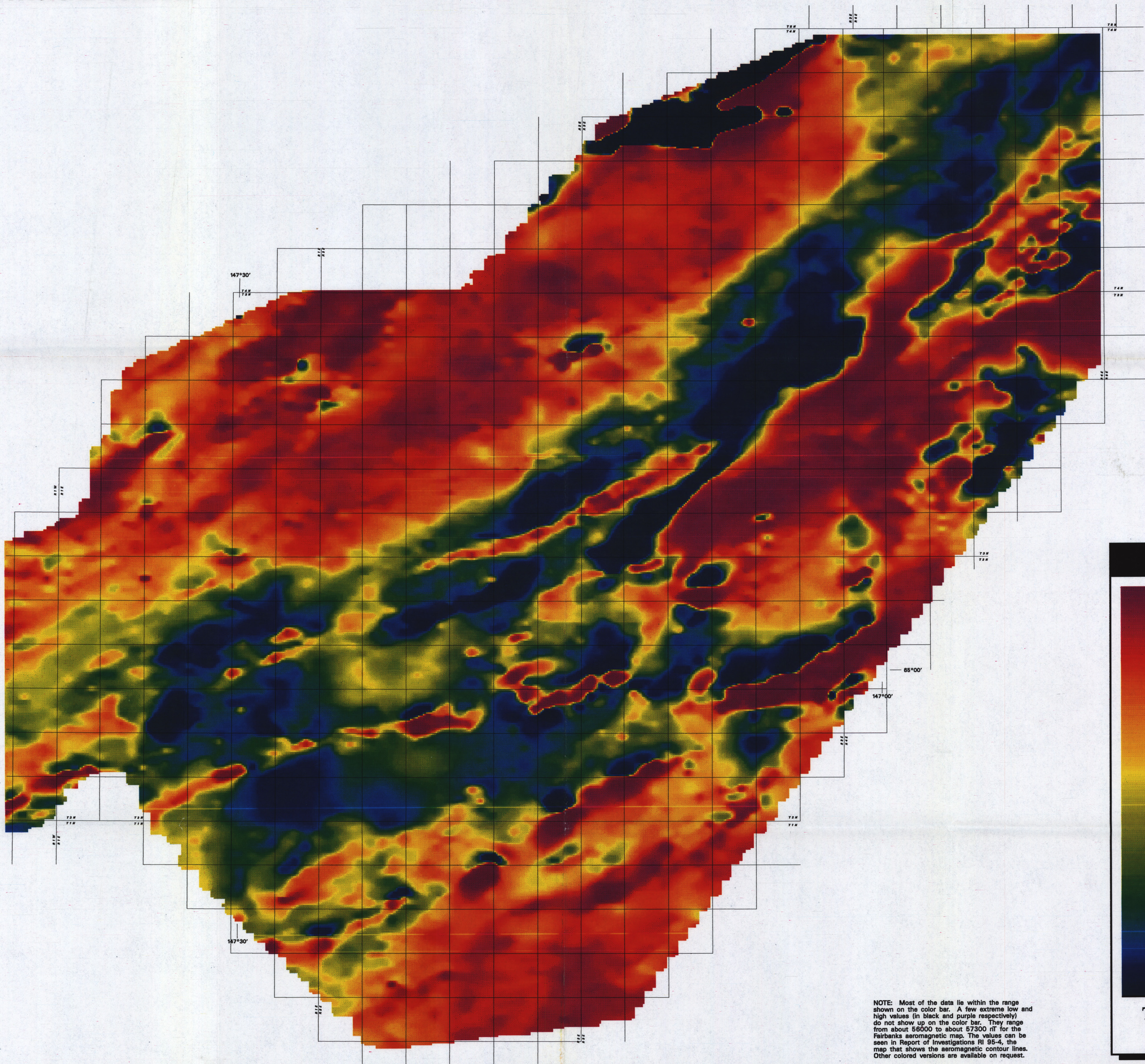




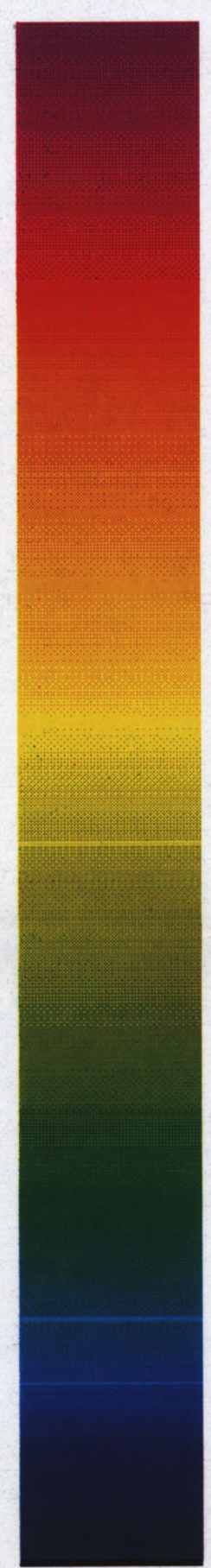
Department of Natural Resources
Division of Geological and Geophysical Surveys
Geologic Data Modeling System

The State of Alaska makes no express or implied warranties (including warranties for merchantability and fitness) with respect to the character, function, or capabilities of the electronic services of products or their appropriateness for any user's purposes. In no event will the State of Alaska be liable for any incidental, indirect, special, consequential or other damages suffered by the user or any other person or entity whether from use of the electronic services or products, any failure thereof or otherwise, and in no event will the State of Alaska's liability to the Requestor or anyone else exceed the fee paid for the electronic service or product.



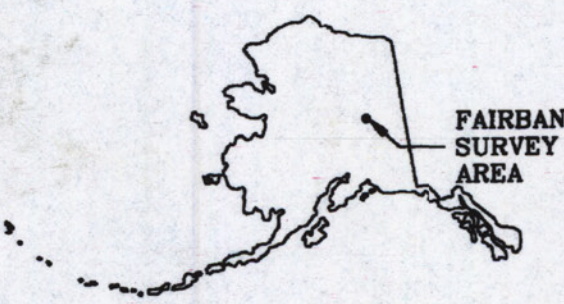
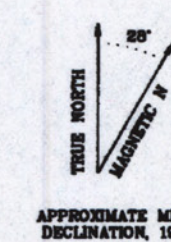
NOTE: Most of the data lie within the range shown on the color bar. A few extreme low and high values (in black and purple respectively) do not show up on the color bar. They range from about 56000 to about 57300 nT for the Fairbanks aeromagnetic map. The values can be seen in Report of Investigations RI 95-4, the map that shows the aeromagnetic contour lines. Other colored versions are available on request.

COLOUR BAR

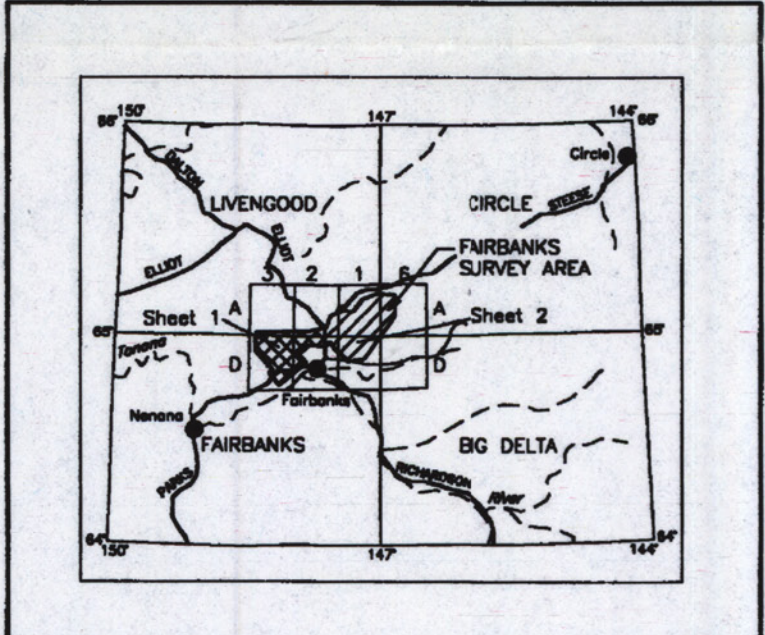


56867
56793
56774
56766
56761
56756
56752
56747
56743
56740
56737
56734
56732
56730
56728
56726
56724
56721
56719
56717
56714
56712
56709
56707
56704
56700
56694
56682
56476

Total field magnetics
in nT



LOCATION INDEX



SURVEY HISTORY

This map has been compiled and drawn under contract between the State of Alaska, Department of Natural Resources, Division of Geological & Geophysical Surveys, and WGM, Mining and Geological Consultants, Inc. Airborne geophysical data for the area was acquired by DIGHEM, a division of CGG Versar Ltd., in 1994. Other products from this survey are available from the Alaska Division of Geological & Geophysical Surveys, 794 University Ave., Suite 200, Fairbanks, Alaska, 99709.

Section outlines from Geological Survey topographic bases: Big Delta D-6, 1975; Circle A-6, 1954; Fairbanks D-1, D-2, 1975; Livengood A-1, 1952; A-2, 1975; Quadangles, Alaska

TOTAL FIELD MAGNETICS OF THE EAST FAIRBANKS MINING DISTRICT

BACKGROUND TREND REMOVED

1995

