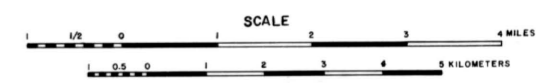


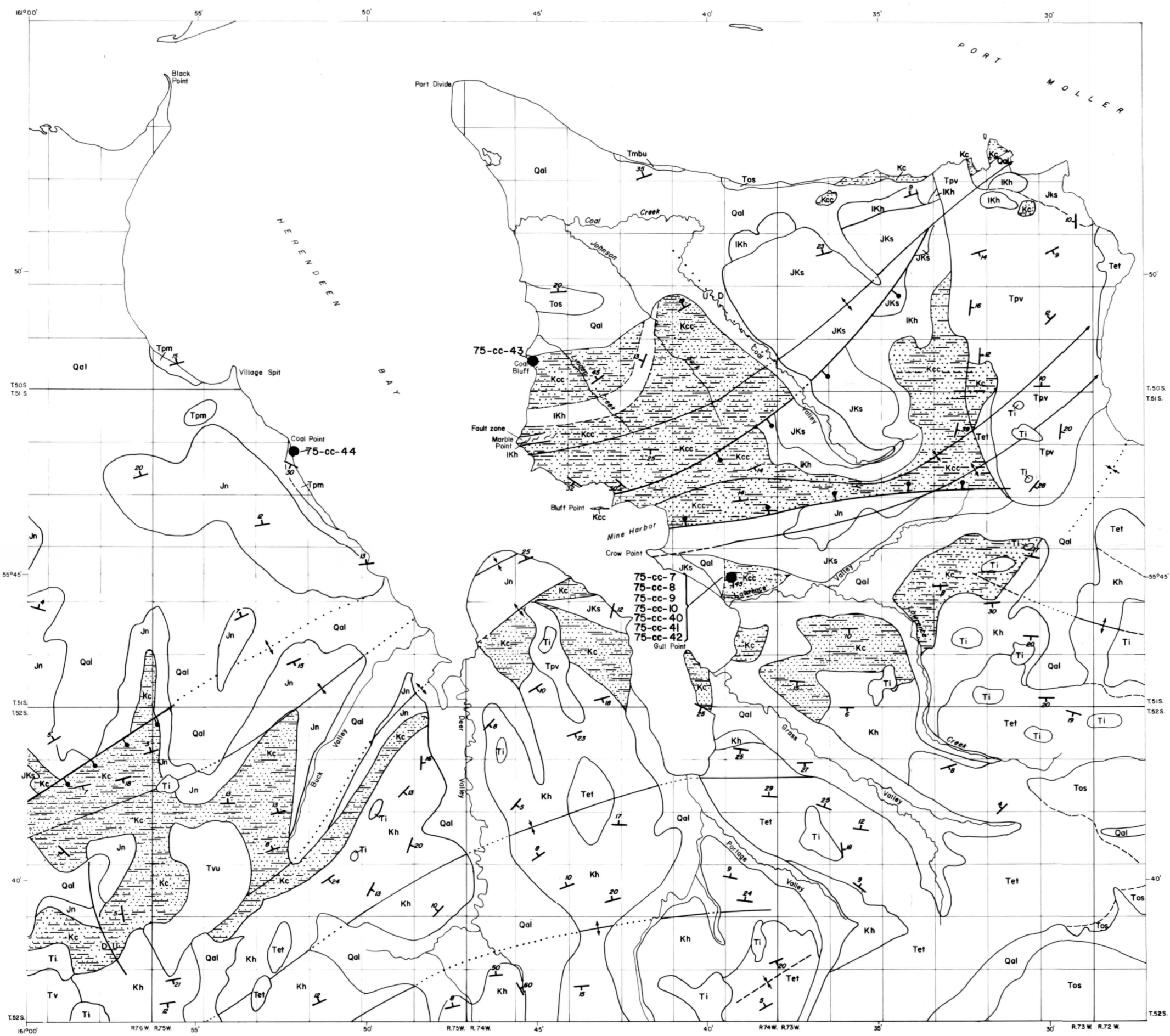
EXPLANATION

Quaternary		Qal	Alluvium	
		Ti	Intrusive Rocks	
		Tpv	Volcanic Rocks	
		Tpm	Marine Rocks	
		Tmb	Bear Lake Formation	
		Tos	Stepovak Formation	
		Tet	Tolstoi Formation	
	Tertiary		Kh	Hoodoo Formation
			Kc, Kcc	Chignik Formation Kcc, Coal Valley Member
			IKh	Herendeen Limestone
		JKs	Stanukovich Formation	
		Jn	Naknek Formation	
		Tvu	Tertiary Volcanic Rocks of Unknown Relative Ages	
Cretaceous			Contact	Dashed where approximately located
			Normal Fault	Dotted where concealed; balls on downthrown side
			Anticline	Dashed where approximately located; dotted where concealed; showing trace of axial surface
			Syncline	Dashed where approximately located; dotted where concealed; showing trace of axial surface
		Inclined	Strike and dip of beds	
		Vertical	Strike and dip of beds	
		Horizontal	Strike and dip of beds	
		Sample location		
	Mesozoic		TRUE NORTH	
			MAGNETIC NORTH	APPROXIMATE MEAN DECLINATION, 1963



Geology mapped by C.R. Burk, 1958-61. Field work by W.M. Lyle and P.L. Dobby in 1973. Compilation with modifications of C.R. Burk's map by W.M. Lyle in 1974. From AOP-48, plate 1.

Base from U.S. Geological Survey, 1963: Port Moller C-2, D-2, and D-3 quadrangles, Alaska



SAMPLE LOCATIONS, HERENDEEN BAY AREA, ALASKA