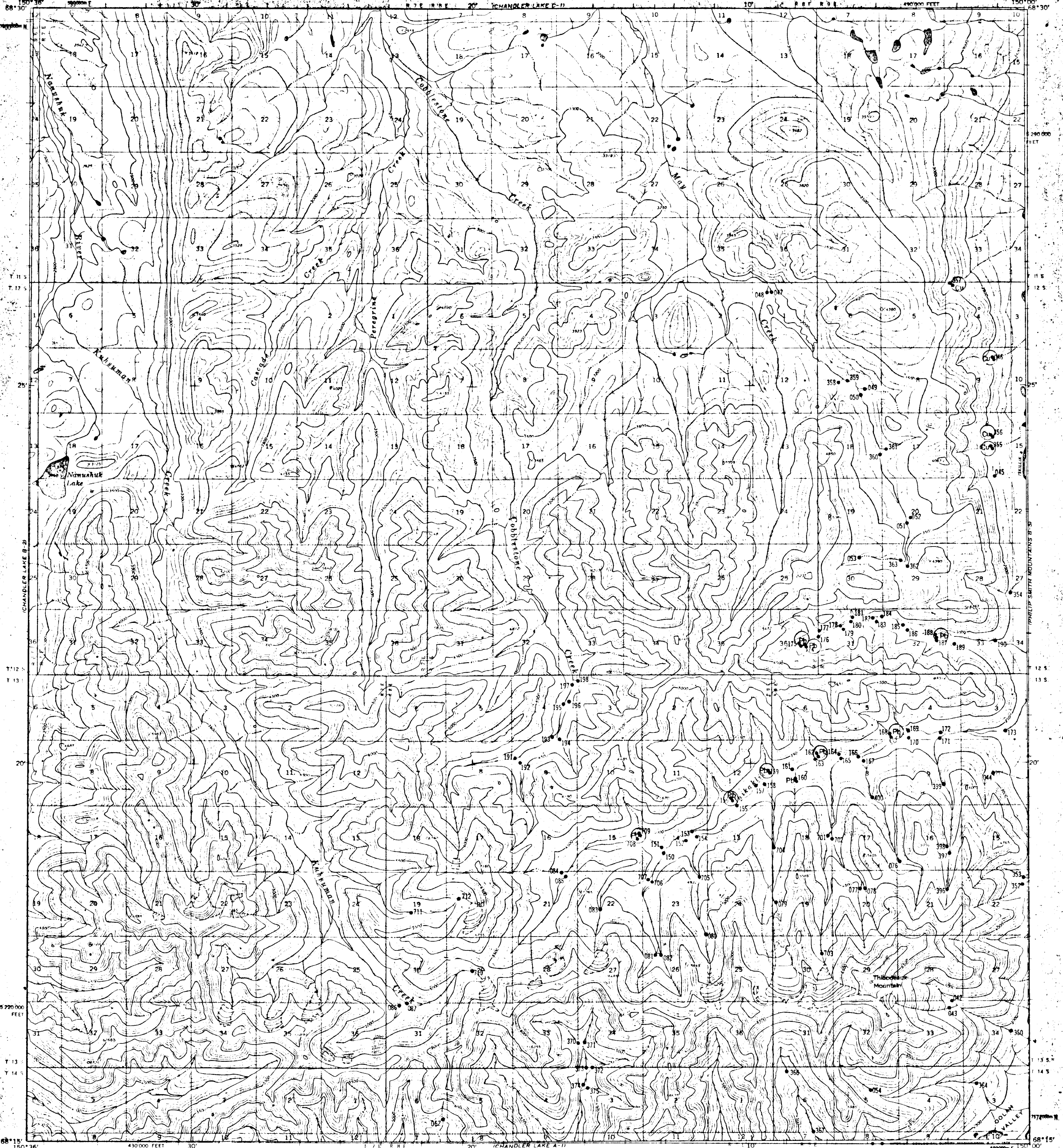
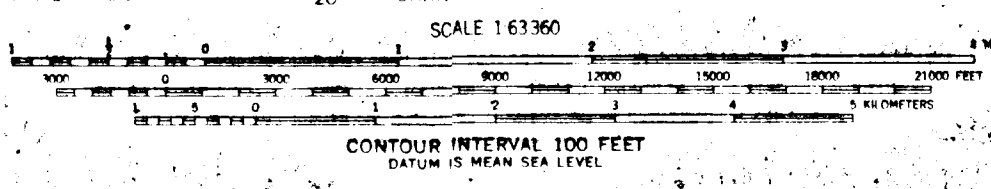
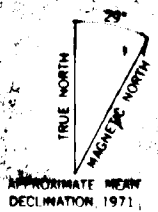


UNITED STATES  
DEPARTMENT OF THE INTERIOR  
GEOLOGICAL SURVEY

CHANDLER LAKE (B-1) QUADRANGLE  
ALASKA  
1:63 560 SERIES (TOPOGRAPHIC)



Mapped, edited, and published by the Geological Survey  
Control by USGS and USC&GS  
Topography by photogrammetric methods from aerial photographs  
taken 1970, field annotated 1971. Map not field checked  
Projection and 1000-meter grid ticks: Universal  
Transverse Mercator, zone 5  
10,000-foot grid ticks based on Alaska coordinate  
system, zone 4, 1927 North American datum  
Land lines represent unsurveyed and unmarked locations  
pre-determined by the Bureau of Land Management  
Folio U-11, Umiat Meridian



ROAD CLASSIFICATION  
No roads or trails in this area

CHANDLER LAKE (B-1), ALASKA  
N6815-W15000/15 X 36

FOR SALE BY U.S. GEOLOGICAL SURVEY  
FAIRBANKS, ALASKA 99701, DENVER, COLORADO 80225, OR WASHINGTON, D.C. 20241  
A FOLDER DESCRIBING TOPOGRAPHIC MAPS AND SYMBOLS IS AVAILABLE ON REQUEST

1971