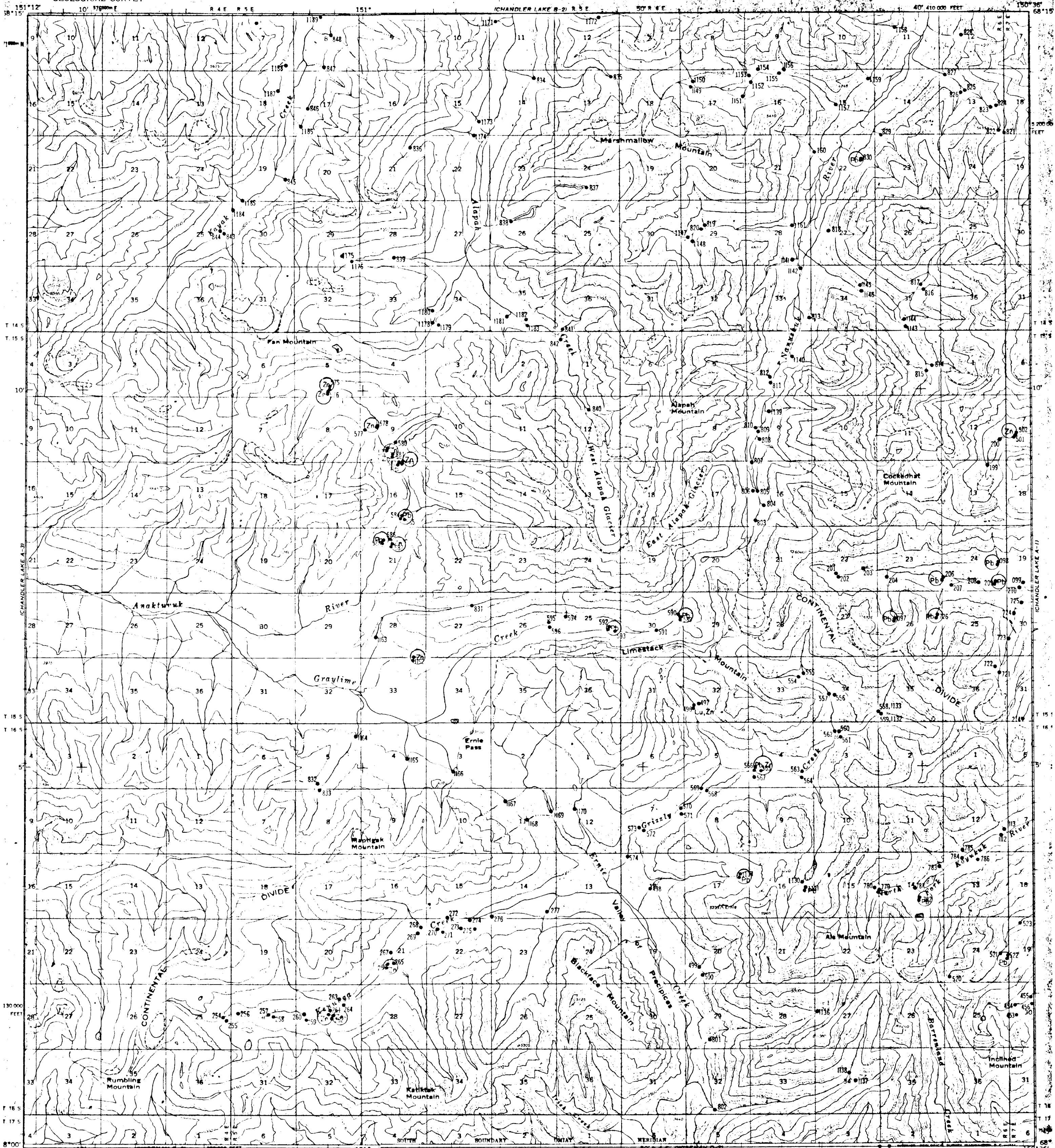


UNITED STATES
DEPARTMENT OF THE INTERIOR
GEOLOGICAL SURVEY

CHANDLER LAKE (A-2) QUADRANGLE

ALASKA
1:63 360 SERIES (TOPOGRAPHIC)
40' 410 000 FEET

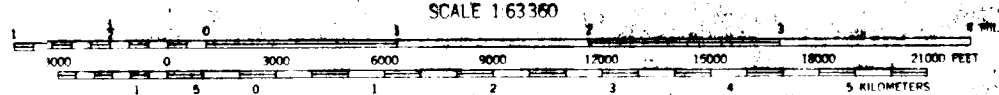
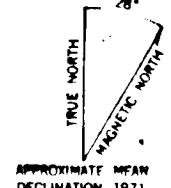


Mapped, edited, and published by the Geological Survey
Control by USGS and USC&GS

Topography by photogrammetric methods from aerial photographs
taken 1970, field annotated 1971. Map not field checked.

Projection and 1000-meter grid ticks: Universal
Transverse Mercator, zone 4
10,000-foot grid ticks based on Alaska coordinate
system, zone 5, 1927 North American datum

Land lines represent unsurveyed and unmarked locations
predetermined by the Bureau of Land Management
Folio U-11, Umiat Meridian



SCALE 1:63360

CONTOUR INTERVAL 100 FEET
DATUM IS MEAN SEA LEVEL

WORD CLASSIFICATION

No roads or trails in this area



CHANDLER LAKE (A-2), ALASKA

N6800-W15036/15 X 36

FOR SALE BY U.S. GEOLOGICAL SURVEY
FAIRBANKS, ALASKA 99701, DENVER, COLORADO 80225, OR WASHINGTON, D. C. 20542
A FOLDER DESCRIBING TOPOGRAPHIC MAPS AND SYMBOLS IS AVAILABLE ON REQUEST

1971