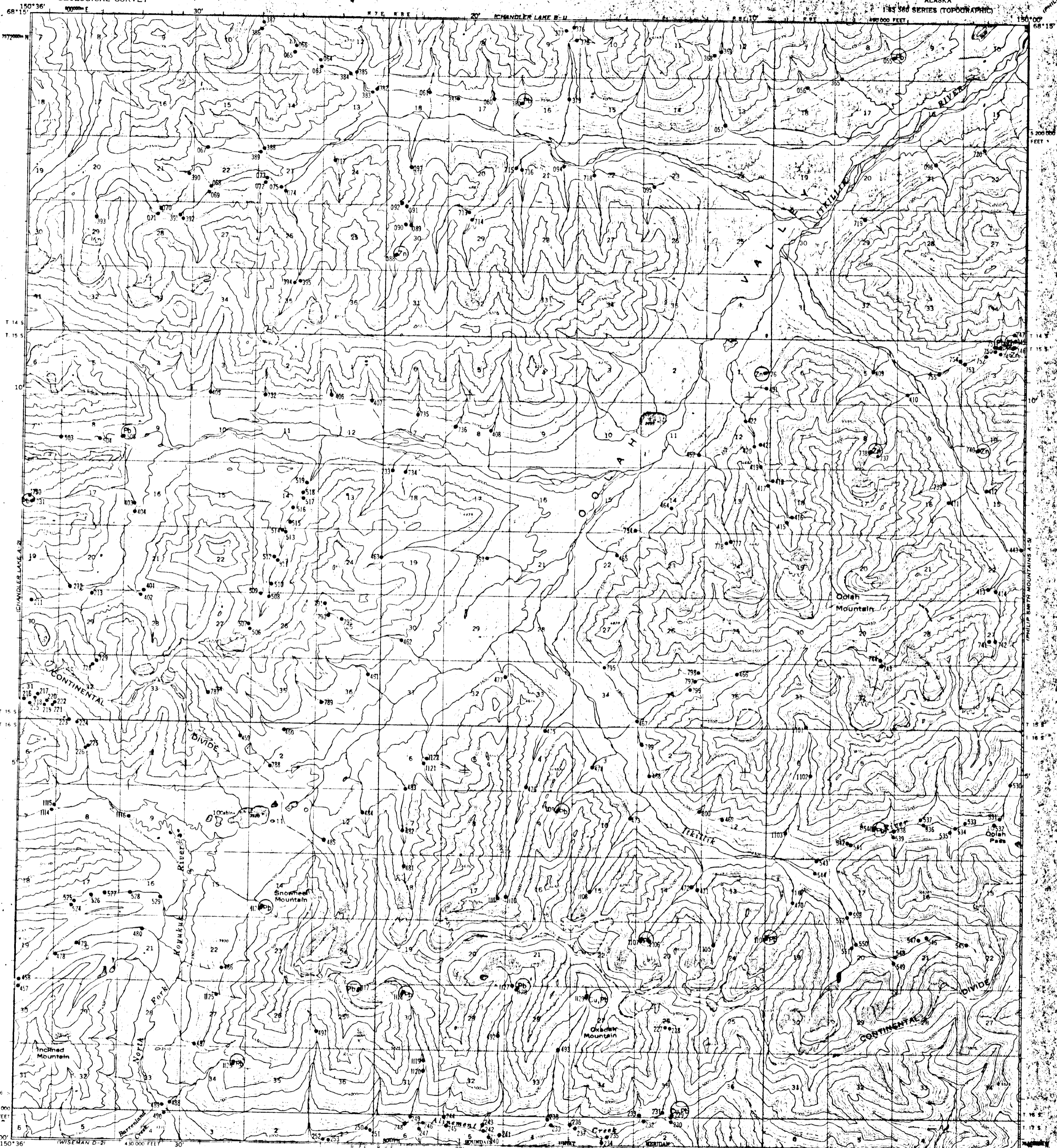


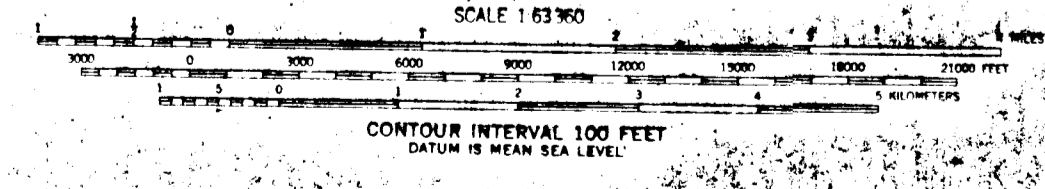
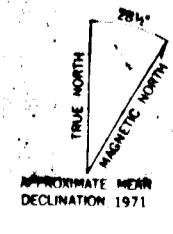
UNITED STATES
DEPARTMENT OF THE INTERIOR
GEOLOGICAL SURVEY

CHANDLER LAKE (A-1) QUADRANGLE
ALASKA

1:50,000 SERIES (TOPOGRAPHIC)



Maped, edited, and published by the Geological Survey
Control by USGS and USC&GS
Topography by photogrammetric methods from aerial photographs
taken 1970, field annotated 1971. Map not field checked
Projection and 1000-meter grid ticks: Universal
Transverse Mercator, zone 5
10,000-foot grid based on Alaska coordinate
system, zone 4 1927 North American datum
Land lines represent unsurveyed and unmarked locations
predetermined by the Bureau of Land Management.
Folio U-11, Umat Meridian



CHANDLER LAKE (A-1), ALASKA
N6800-W15000/15 X 36

1971

FOR SALE BY U.S. GEOLOGICAL SURVEY
FAIRBANKS, ALASKA 99701, DENVER, COLORADO 80225, OR WASHINGTON, D. C. 20242
A FOLDER DESCRIBING TOPOGRAPHIC MAPS AND SYMBOLS IS AVAILABLE ON REQUEST