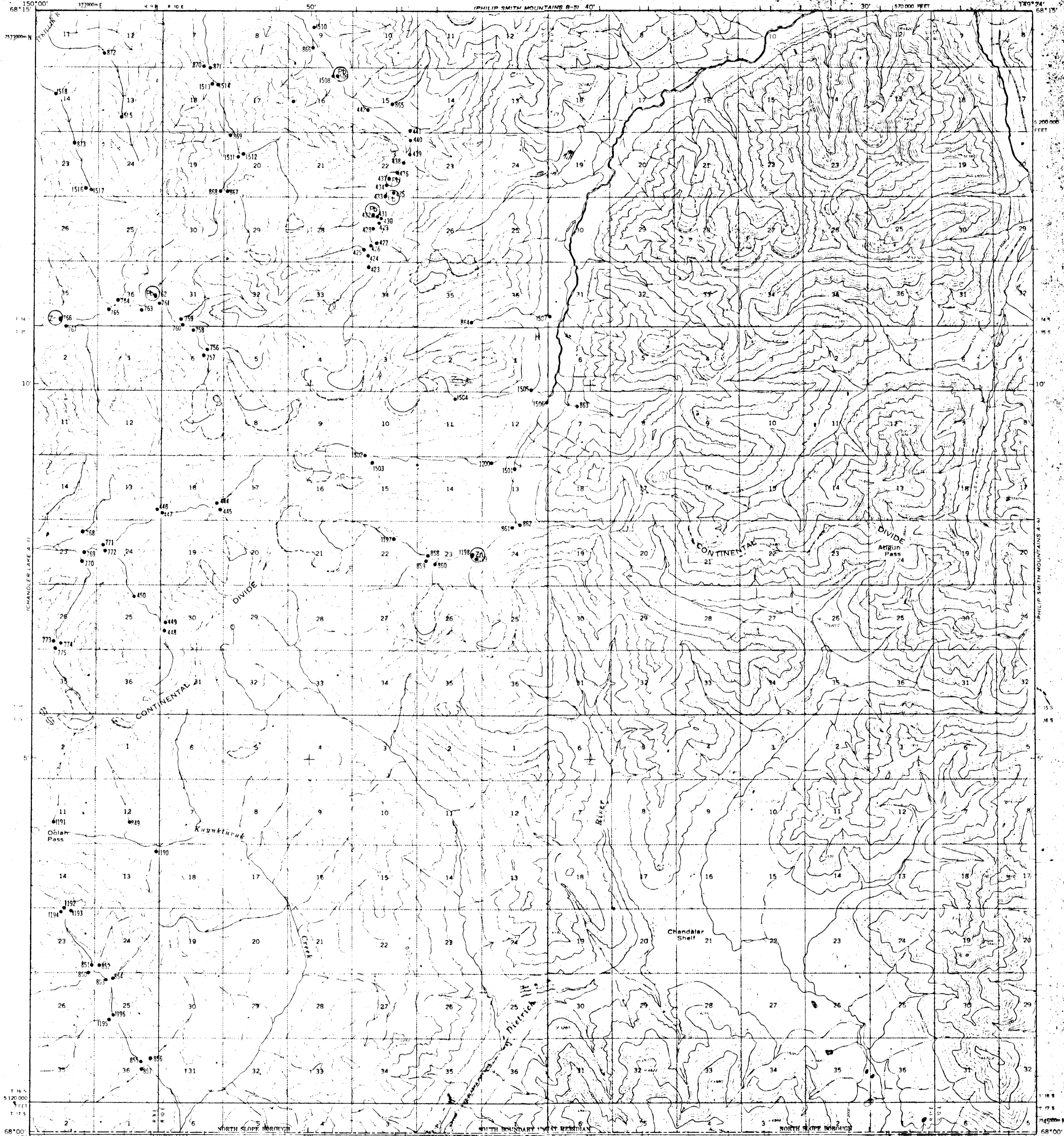
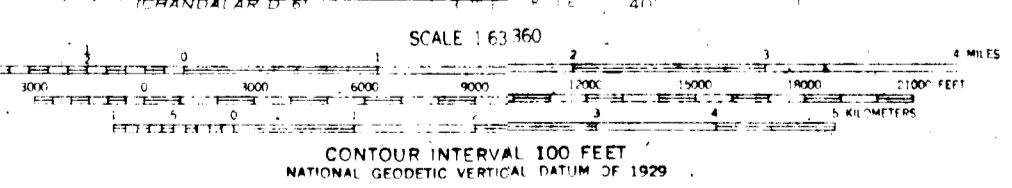
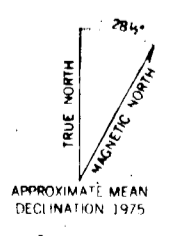


UNITED STATES
DEPARTMENT OF THE INTERIOR
GEOLOGICAL SURVEY

PHILIP SMITH MOUNTAINS (A-5) QUADRANGLE
ALASKA—NORTH SLOPE BOROUGH
1:63 360 SERIES (TOPOGRAPHIC)



Mapped, edited, and published by the Geological Survey
Control by USGS and USC&GS
Topography by photogrammetric methods from aerial photographs
taken 1970, field annotated 1971. Map not field checked
Projection and 1000 meter grid ticks: Universal
Transverse Mercator, zone 6
10,000-foot grid ticks based on Alaska coordinate
system, zone 4 1927 North American datum
I and lines represent unsurveyed and unmarked locations
predetermined by the Bureau of Land Management
Folio U-11, Umat Meridian



PHILIP SMITH MOUNTAINS (A-5), ALASKA
N6800—W14924/15 X 36
1971
PHOTOREVISED 1975

FOR SALE BY U.S. GEOLOGICAL SURVEY
FAIRBANKS, ALASKA 99701, DENVER, COLORADO 80225, OR RESTON, VIRGINIA 22092
A FOLDER DESCRIBING TOPOGRAPHIC MAPS AND SYMBOLS IS AVAILABLE ON REQUEST

ROAD CLASSIFICATION
Light duty ——— Unimproved dirt - - - - -