

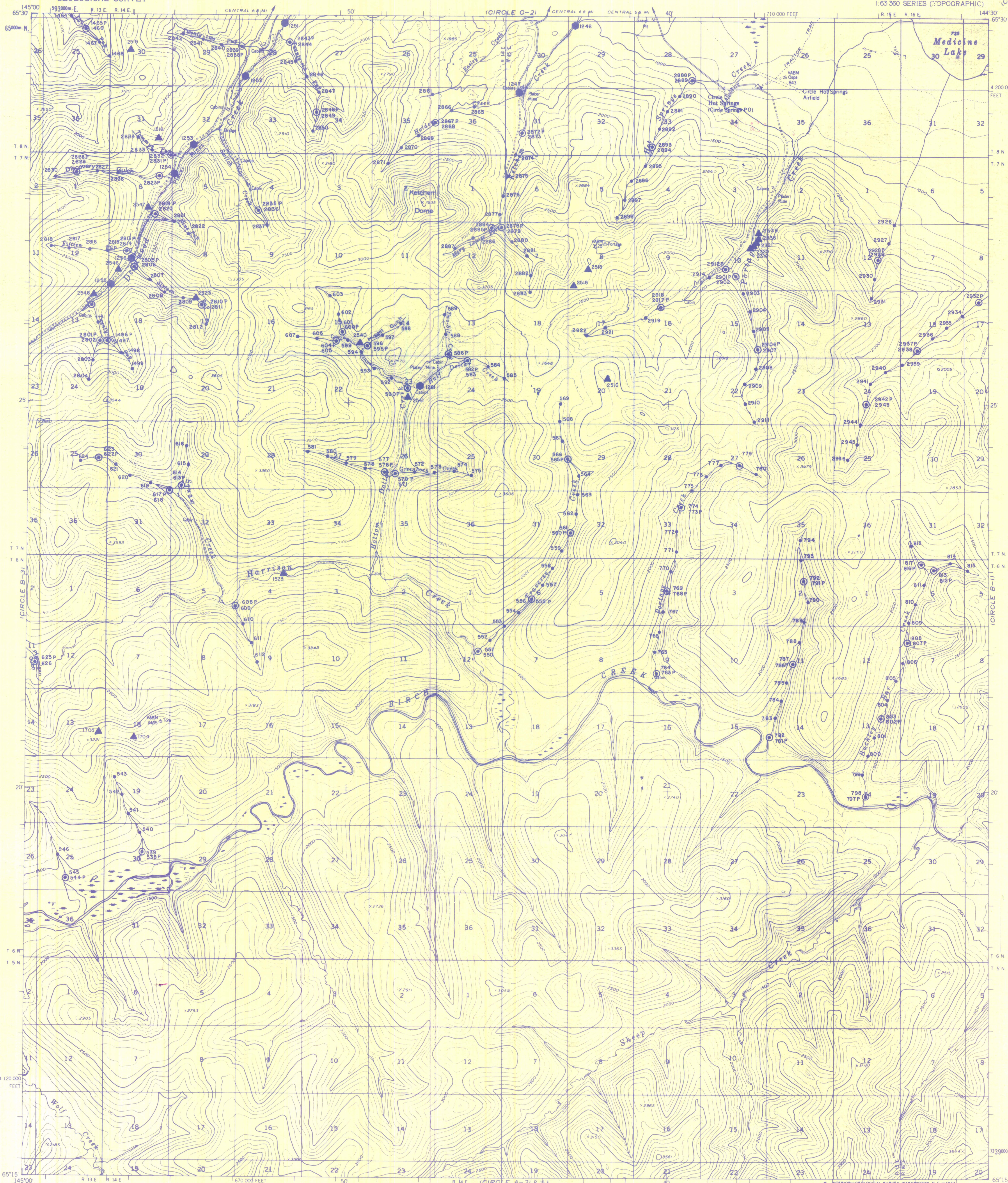
EXPLANATION

- Stream sediment sample location
- ⊙ Pan concentrate sample location
- ⊕ Sluice concentrate sample location
- ▲ Rock geochemical sample location

MIRL OF 84-9  
Metz - Geochem, Circle

UNITED STATES  
DEPARTMENT OF THE INTERIOR  
GEOLOGICAL SURVEY

PLATE I  
CIRCLE (B-2) QUADRANGLE  
ALASKA  
1:63 360 SERIES (TOPOGRAPHIC)

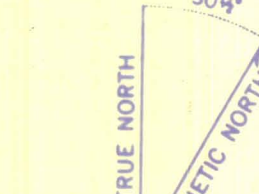


Mapped, edited, and published by the Geological Survey  
Control by USGS and USC&GS

Topography by photogrammetric methods from aerial photographs taken 1951, 1953, and 1955; field annotated 1955. Map not field checked  
Universal Transverse Mercator projection 1927 North American datum 10,000-foot grid based on Alaska coordinate system, zone 3 1000-meter Universal Transverse Mercator grid ticks.

Land lines represent unsurveyed and unmarked locations determined by the Bureau of Land Management  
Folio F-7, Fairbanks Meridian

Swamps, as portrayed, indicate only the wetter areas, usually of low relief, as interpreted from aerial photographs.



APPROXIMATE MEAN  
DECLINATION, 1955



SCALE 1:63 360

CONTOUR INTERVAL 100 FEET  
DASHED LINES REPRESENT 50 FOOT CONTOURS  
DATUM IS MEAN SEA LEVEL

LOCATION OF STREAM SEDIMENT AND OTHER GEOCHEMICAL  
SAMPLES FROM THE CIRCLE MINING DISTRICT, ALASKA

BY  
PAUL A. METZ  
MINERAL INDUSTRY RESEARCH LABORATORY

ROAD CLASSIFICATION  
Light duty ——— Unimproved dirt - - - - -



QUADRANGLE LOCATION

CIRCLE (B-2), ALASKA  
N6515-W14430/15X30

1955  
MINOR REVISIONS 1971