

Cu,Pb ● Anomalous stream sediment sample location indicating anomalous elements (see text)

VI New anomalous area from this investigation, description in text

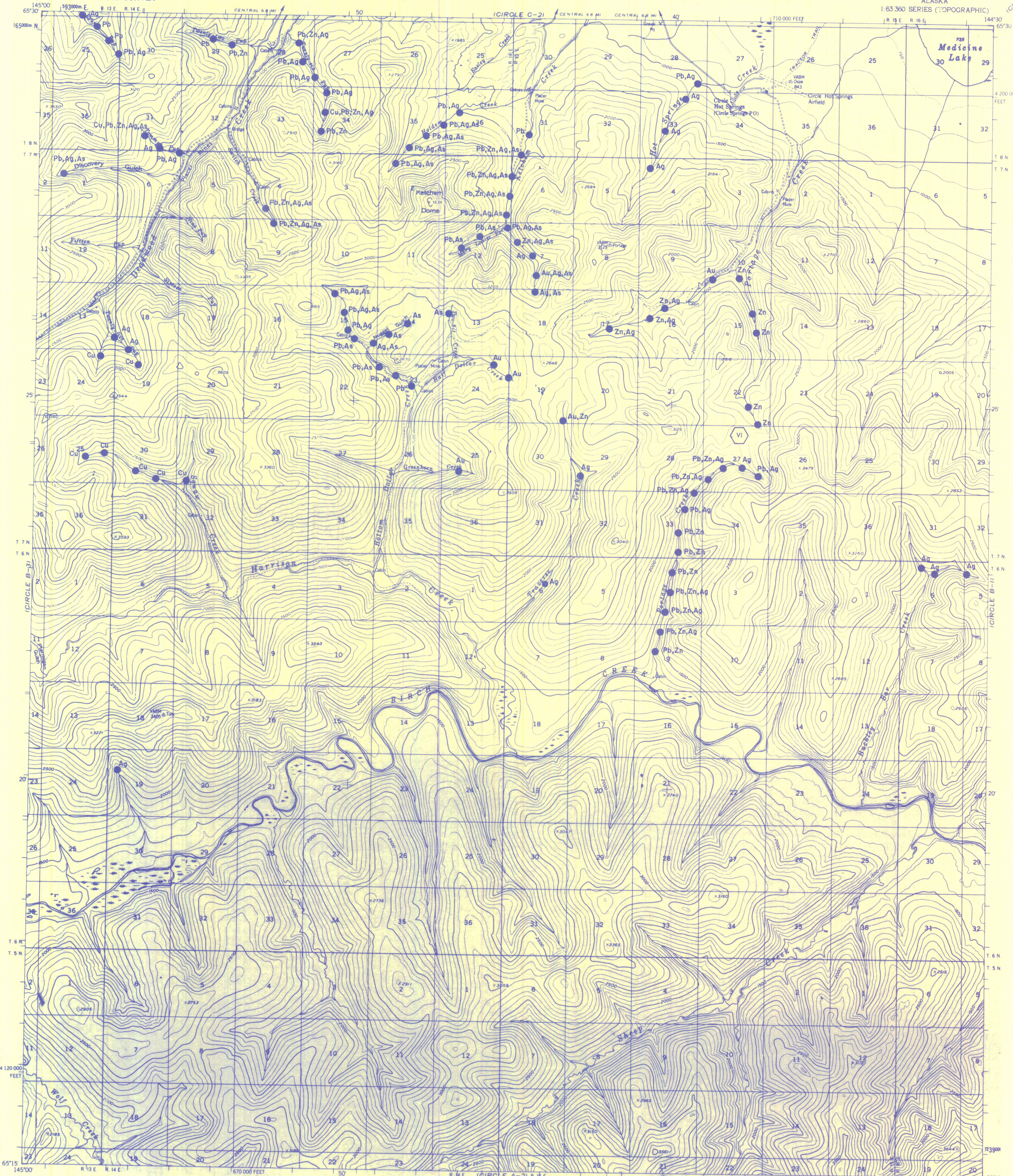
TKg Granite

EXPLANATION

UNITED STATES
DEPARTMENT OF THE INTERIOR
GEOLOGICAL SURVEY

PLATE VII
CIRCLE (B-2) QUADRANGLE
ALASKA

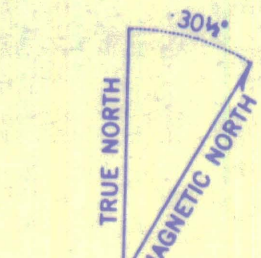
1:63 360 SERIES (TOPOGRAPHIC)



Mapped, edited, and published by the Geological Survey
Control by USGS and USC&GS

Topography by photogrammetric methods from aerial photographs taken 1951, 1953, and 1955, field annotated 1955. Map not field checked
Universal Transverse Mercator projection, 1927 North American datum 10,000-foot grid based on Alaska coordinate system, zone 3 1000-meter Universal Transverse Mercator grid ticks.

Land lines represent unsurveyed and unmarked locations predetermined by the Bureau of Land Management
Foto F. 7, Fairbanks Meridian
Swamps, as portrayed, indicate only the wetter areas usually of low relief, as interpreted from aerial photographs.



CONTOUR INTERVAL 100 FEET
DASHED LINES REPRESENT 50 FOOT CONTOURS
DATUM IS MEAN SEA LEVEL

LOCATION OF ANOMALOUS STREAM SEDIMENT
SAMPLES FROM THE CIRCLE MINING DISTRICT, ALASKA

BY
PAUL A. METZ
MINERAL INDUSTRY RESEARCH LABORATORY

ROAD CLASSIFICATION
Light-duty ——— Unimproved dirt - - - - -



CIRCLE (B-2), ALASKA
N6515-W14430/15X30

1955
MINOR REVISIONS 1971