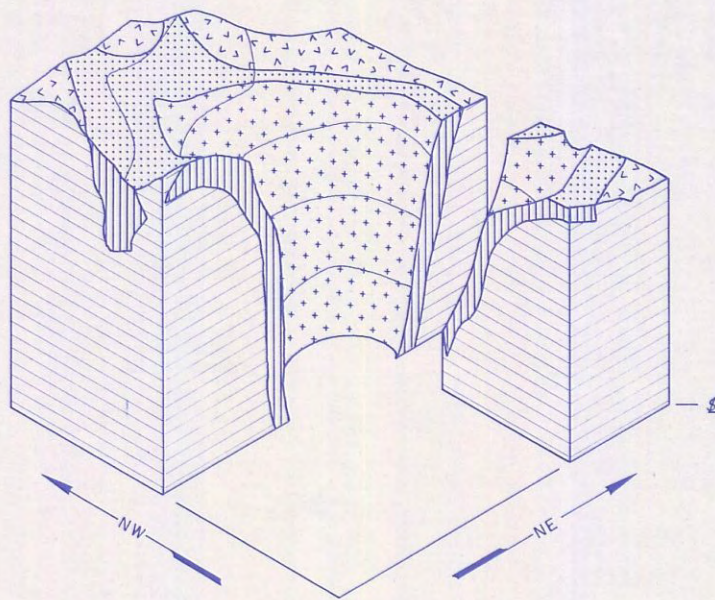
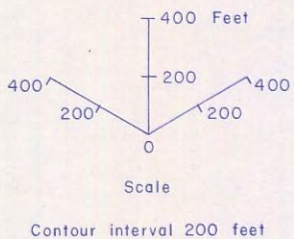
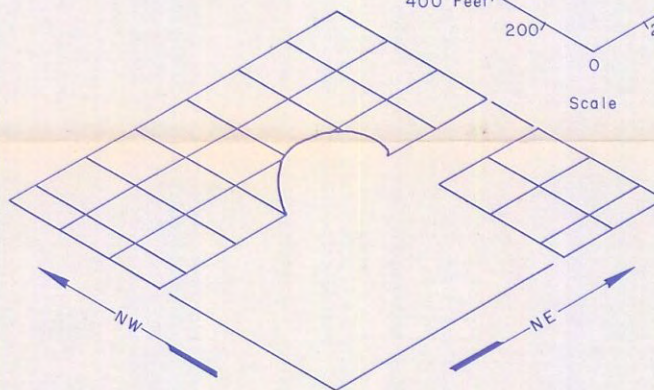
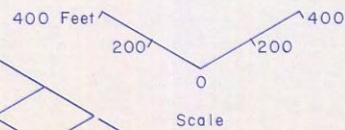


Isometric projection



Isometric base



LEGEND

- Topographic surface other than projected mineralized norite outcrop
- Host rocks in vertical section
- Ore body (Mineralized norite - Tertiary?)
- Outcrop of mineralized norite projected to topographic surface
- Mineralized norite in vertical section
- Inner surface of mineralized norite with central core removed

Note: For illustrative purposes the central core was removed from inside of the ore body

Plan view

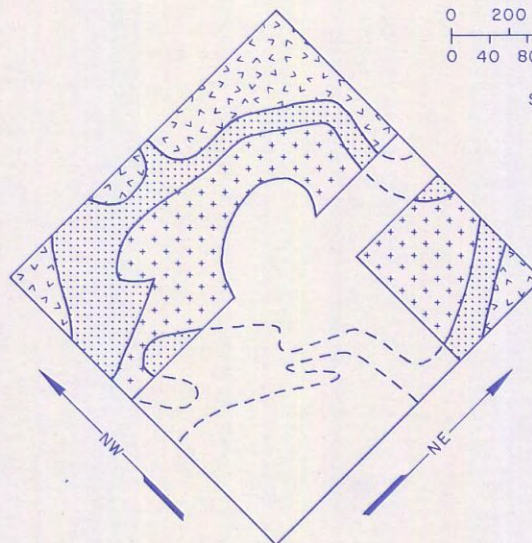
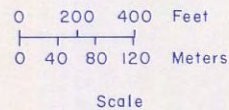


FIGURE 6. - Isometric diagram of the Basin ore body, Bohemia Basin (constructed by K. Weir and C. Merrill, Jr. from data loaned by Inspiration Development Co.)

Fig 6