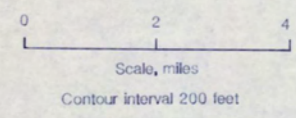
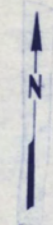


LEGEND

- Qs Surficial deposits, undifferentiated (Quaternary)
- Tv Volcanic rocks, undivided (Paleocene to Pleistocene?)--Felsic and mafic subaerial volcanic rocks and related shallow intrusions.
- Tsu Tertiary sedimentary rocks, undifferentiated (Paleocene to Miocene)--Terrestrial, mostly fluvial strata with a few lignite interbeds.
- Ksu Sedimentary rocks, undivided (Lower Cretaceous)--Shallow marine sequence of calcareous sandstone, claystone, and massive clastic limestone.
- Jnc Jurassic sedimentary rocks, undivided (Middle and Upper Jurassic)--includes Naknek and Chitina Formations.
- Jtk Talkeetna Formation (Lower Jurassic)
- Jpm Plutonic and metamorphic rocks, undifferentiated (Lower to Upper Jurassic)--Mainly quartz diorite, granodiorite, amphibolite, and greenschist.
- Contact
- 200● Sample site



B3.0 map adapted from USGS 1:250,000 scale Talkeetna Mt., quadrangle

Figure 4. - Geology and sample site locations in the Tyone Creek area (geology adapted from 11, 19, 20).