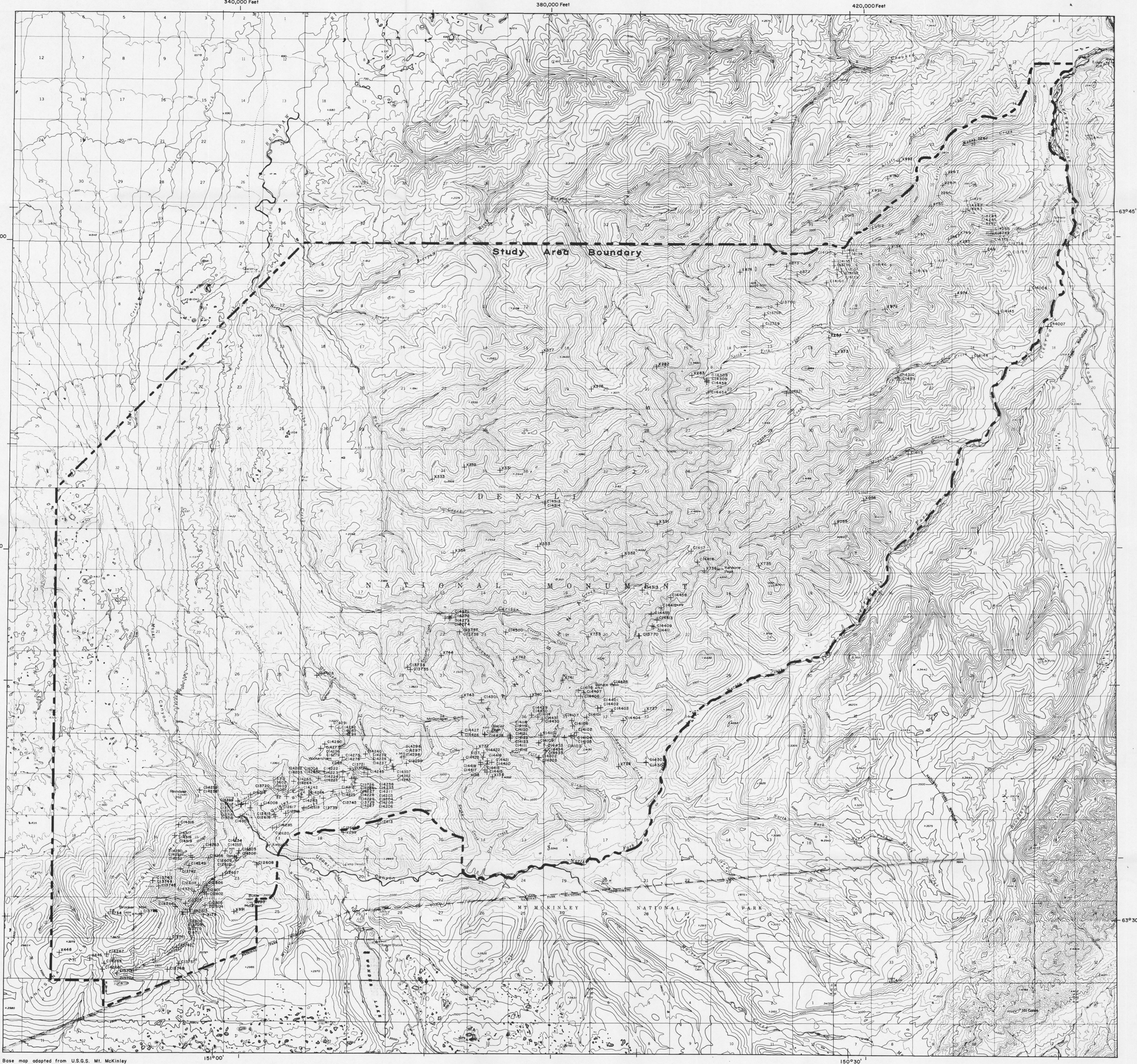
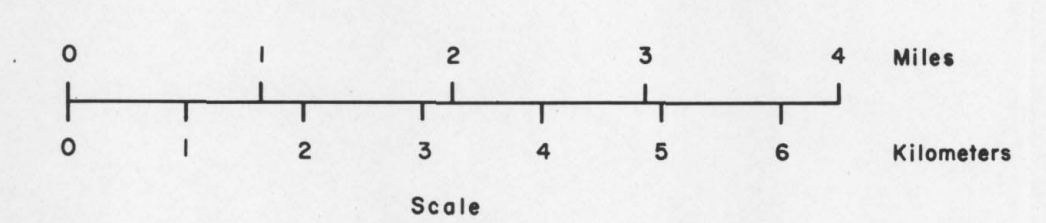


LEGEND

+ Rock chip sample



Base map adapted from U.S.G.S. Mt. McKinley
 B-1,2,3; C-1,2,3; D-1,2,3 1:63,360 quadrangles.
 Work performed for the U.S. Bureau of
 Mines under contract number SO134031
 Prime contractor: Salisbury & Dietz, Inc.
 Technical subcontractors: C.C. Hawley and
 Associates, Inc. and WGM Inc.



Contour interval 100 feet



**KANTISHNA HILLS STUDY AREA
 ROCK CHIP SAMPLE LOCATION MAP**

U.S. BUREAU OF MINES LIBRARY
 P.O. BOX 60359
 Juneau, AK 99802-0550

PLATE K-10