

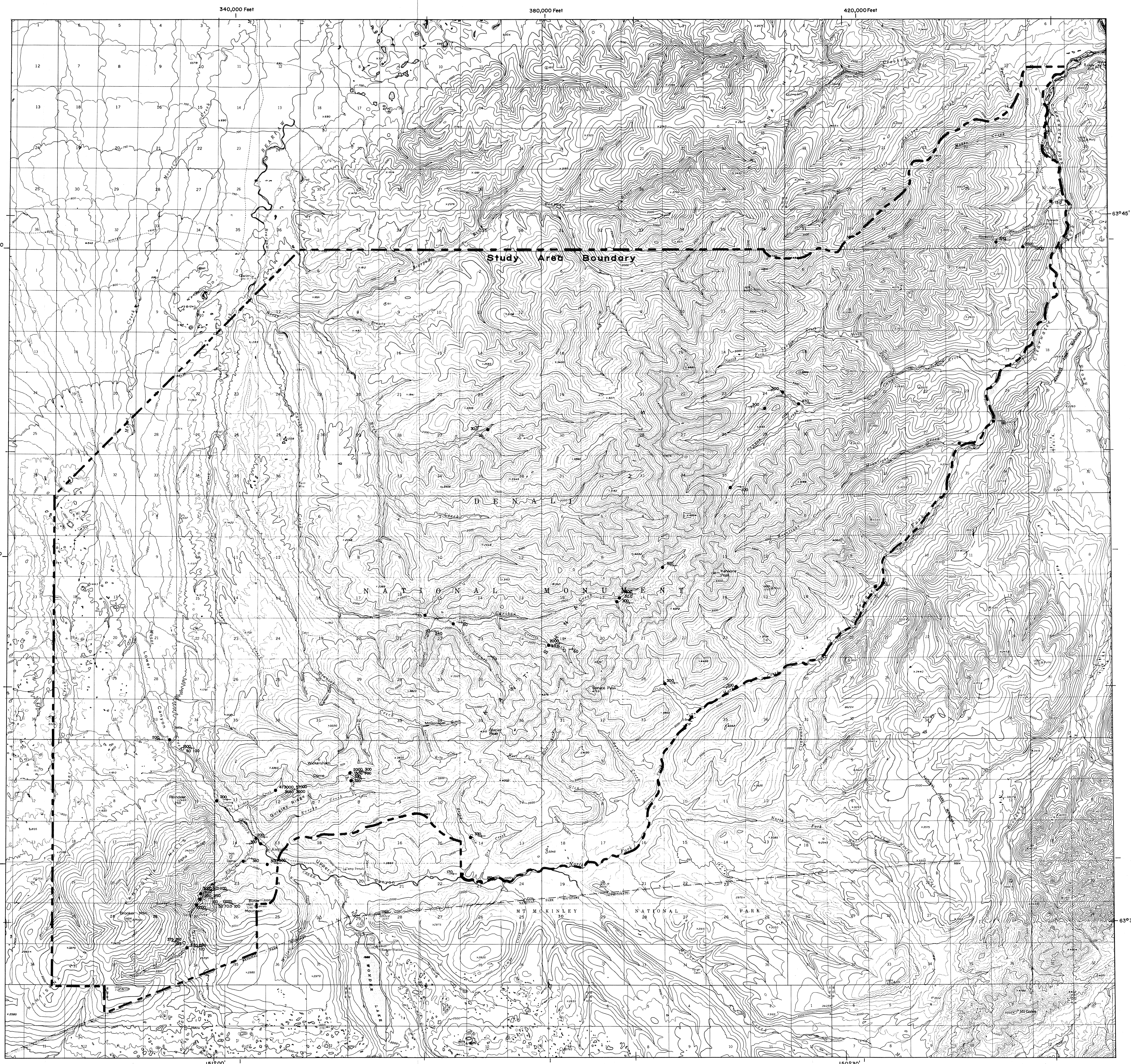
LEGEND

- Reconnaissance placer panned concentrates
- Panned concentrates

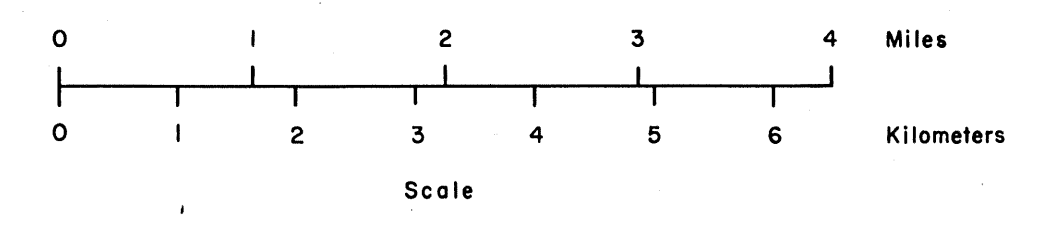
Lead | Zinc
Silver | Copper
Values in ppm

Only anomalous values shown. Blank quadrant indicates that value is less than anomalous.

Note: For reconnaissance placer panned concentrates only
Gold: amalgamated in the field and values calculated as ounces per cubic yard for placer information.
Silver: Values may be low due to loss in amalgamation process.



Base map adapted from U.S.G.S. Mt. McKinley 8-1, 8-3, C-1, 2, 3; D-1, 2, 3 1:50,000 quadrangles. Work performed for the U.S. Bureau of Mines under contract number SO134031. Prime contractor: Salisbury & Dietz, Inc. Technical subcontractors: C.C. Hawley and Associates, Inc. and WGM Inc.



**KANTISHNA HILLS STUDY AREA
STREAM SEDIMENT GEOCHEMISTRY**

HEAVY MINERAL CONCENTRATES ANOMALOUS IN LEAD, ZINC, SILVER, AND COPPER