

# SKETCH MAP SHOWING GEOLOGY AND TOPOGRAPHY OF THE BIRCH CREEK GOLD MINING DISTRICT ALASKA

Scale  
0 1 2 3 4 5 6 MILES  
Contour interval 100 feet

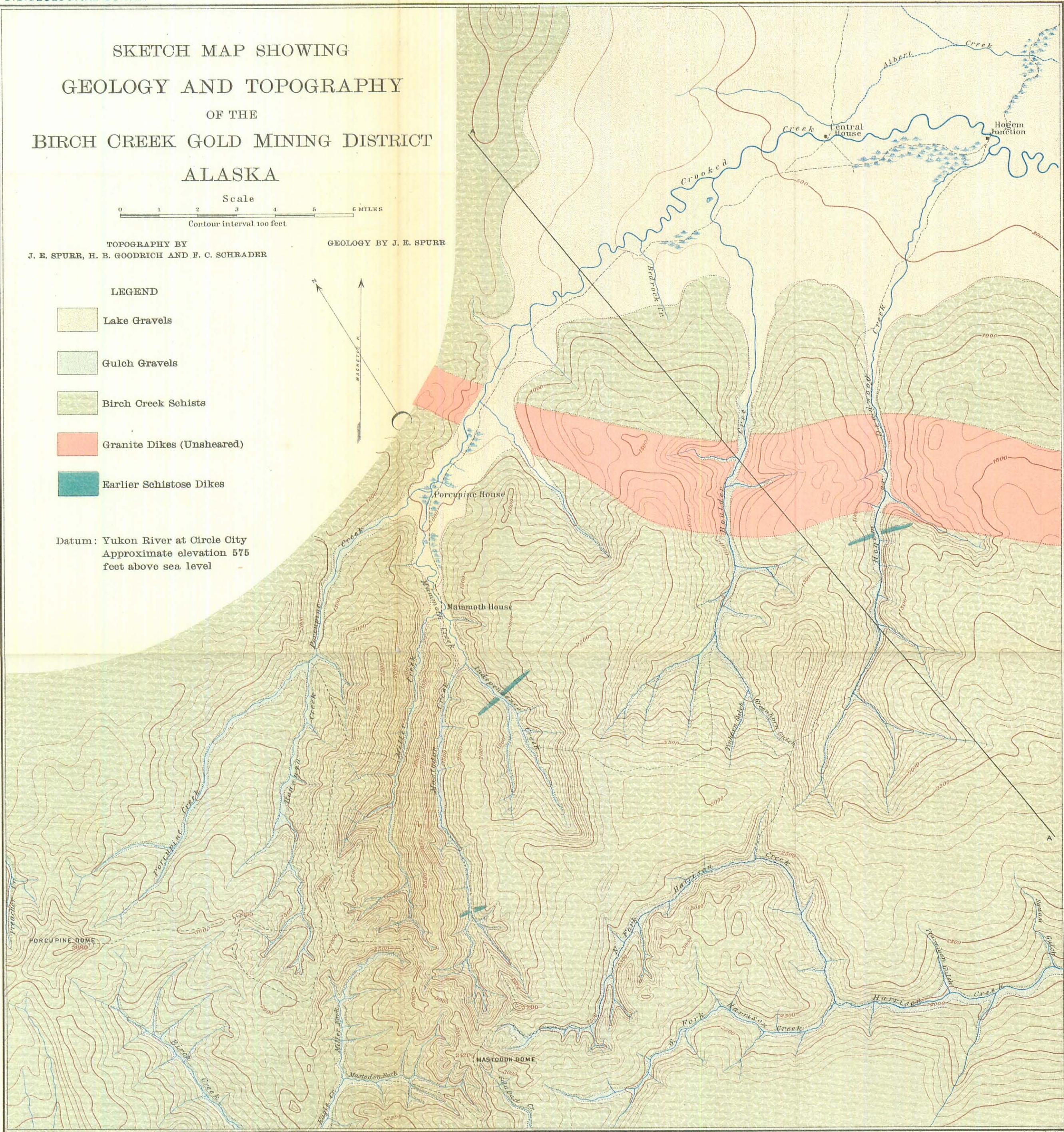
TOPOGRAPHY BY  
J. E. SPURR, H. B. GOODRICH AND F. C. SCHRADER

GEOLOGY BY J. E. SPURR

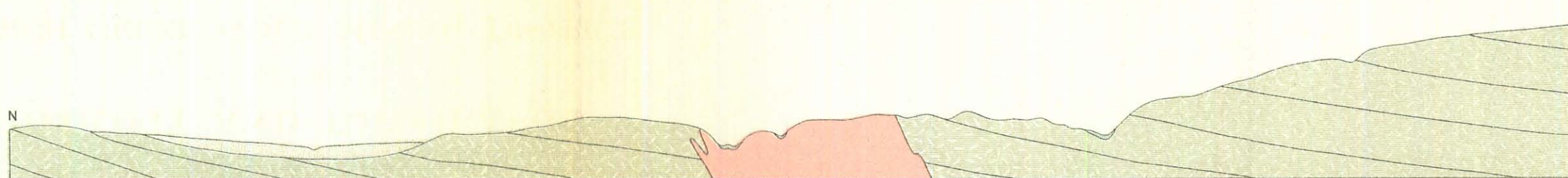
## LEGEND

-  Lake Gravels
-  Gulch Gravels
-  Birch Creek Schists
-  Granite Dikes (Unsheared)
-  Earlier Schistose Dikes

Datum: Yukon River at Circle City  
Approximate elevation 575  
feet above sea level



JULIUS BIEN & CO. LITH. N.Y.



SECTION ON LINE A-A VERTICAL SCALE 4 TIMES EXAGGERATED.