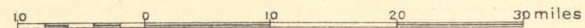


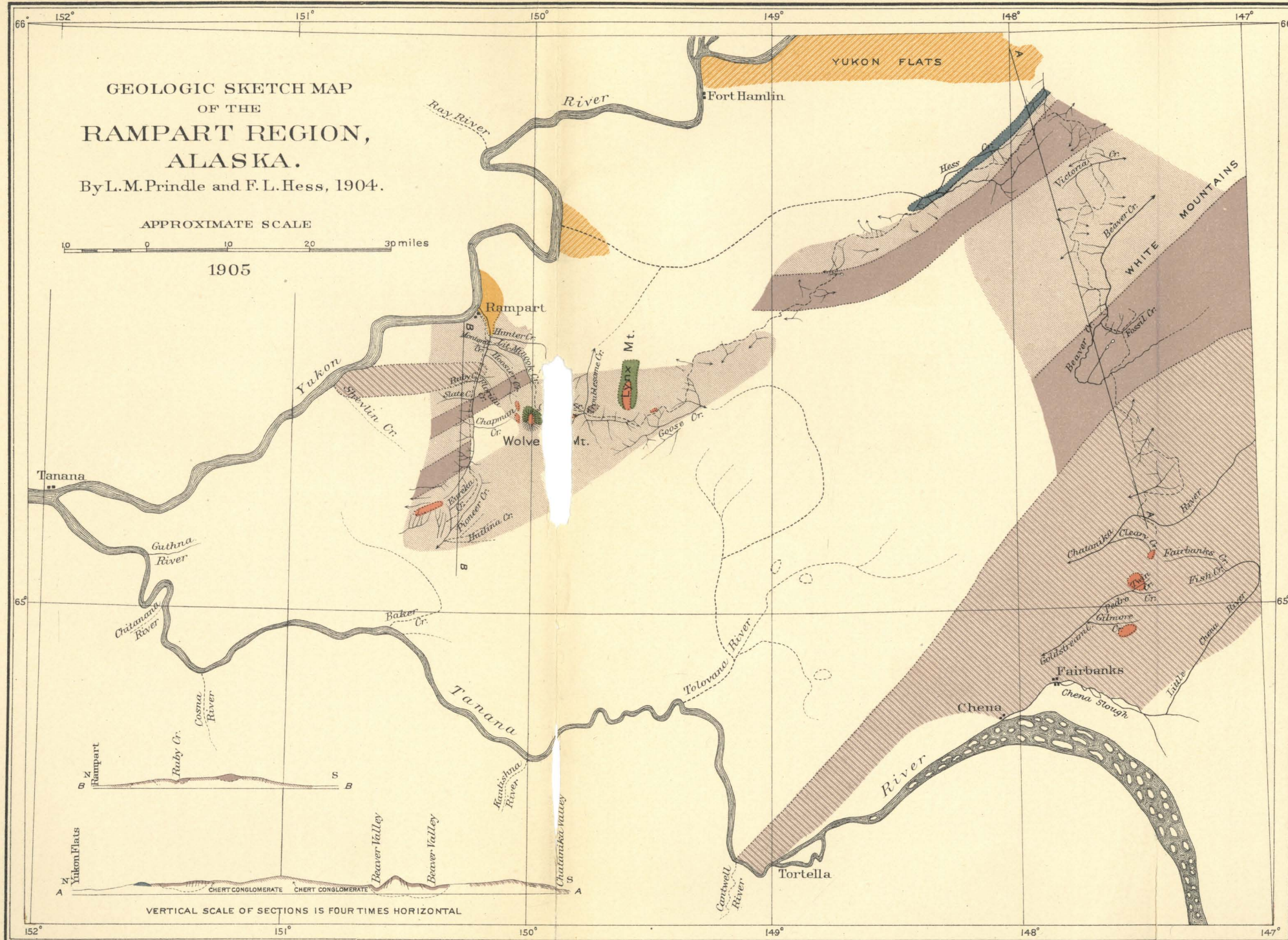
# GEOLOGIC SKETCH MAP OF THE RAMPART REGION, ALASKA.

By L. M. Prindle and F. L. Hess, 1904.

APPROXIMATE SCALE



1905



### LEGEND

#### QUATERNARY

Alluvium

#### TERTIARY

(Kenai formation)

#### CRETACEOUS?

Impure sandstone

#### CARBONIFEROUS

Pennsylvanian?

#### DEVONIAN

Limestones, greenstones, quartzites, red and black slates

#### PRE-DEVONIAN

Cherts, slates, and greenstones

#### PRE-DEVONIAN

Quartzite-schists, quartz-mica schists, garnetiferous schists, and crystalline limestone

#### INTRUSIVE

Intrusive granitic and monzonitic rocks

VERTICAL SCALE OF SECTIONS IS FOUR TIMES HORIZONTAL