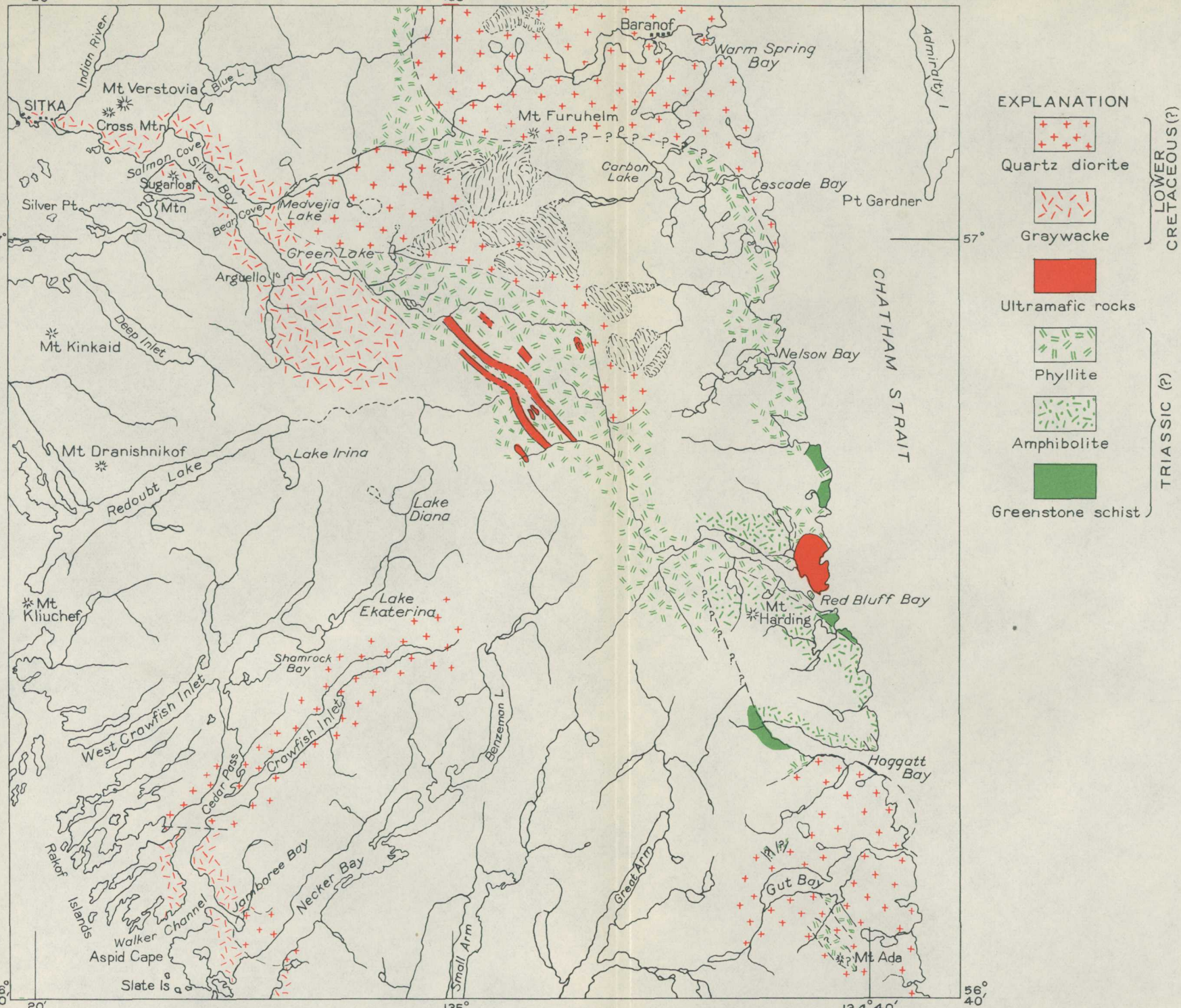


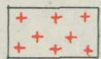
20°

135°

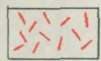
134° 40'



EXPLANATION



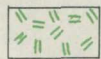
Quartz diorite



Graywacke



Ultramafic rocks



Phyllite



Amphibolite



Greenstone schist

LOWER
CRETACEOUS (?)

TRIASSIC (?)

GEOLOGIC RECONNAISSANCE MAP OF CENTRAL BARANOF ISLAND, SOUTHEASTERN ALASKA

5

0

15 Miles

56°
40'

20°

135°

134° 40'

56°
40'