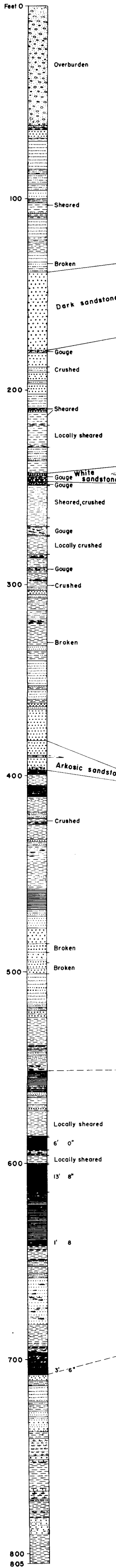


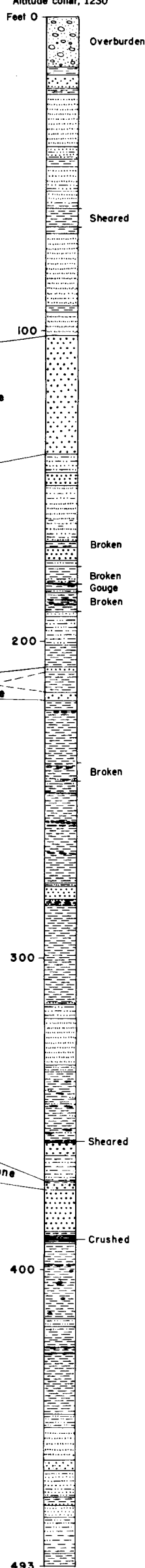
Drill hole 15
Dip, 60°; bearing, N10°W

Altitude collar, 1222'



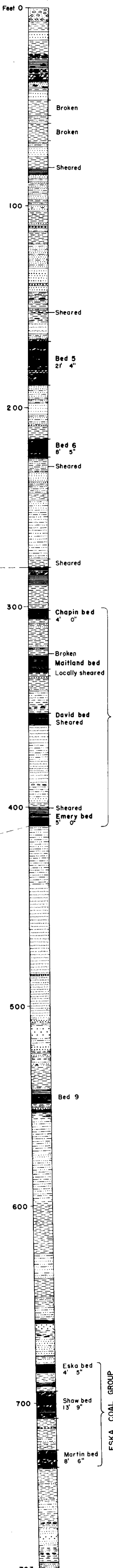
Drill hole 14
Dip, 60°; bearing, N13°W

Altitude collar, 1230'



Drill hole 13
Dip, 56°; bearing, N20°W

Altitude collar, 1381'



EXPLANATION

- Coal
- Coal fragments and lenses
- Bony coal
- Bone
- Coaly shale
- Claystone, partly calcereous
- Silty claystone
- Siltstone, partly calcereous
- Sandstone, partly calcereous
- Ironstone bands and nodules

Drilling by U. S. Bureau of Mines

LOGS OF DIAMOND-DRILL HOLES ON ESKA RESERVE, WISHBONE HILL COAL DISTRICT, MATANUSKA VALLEY, ALASKA