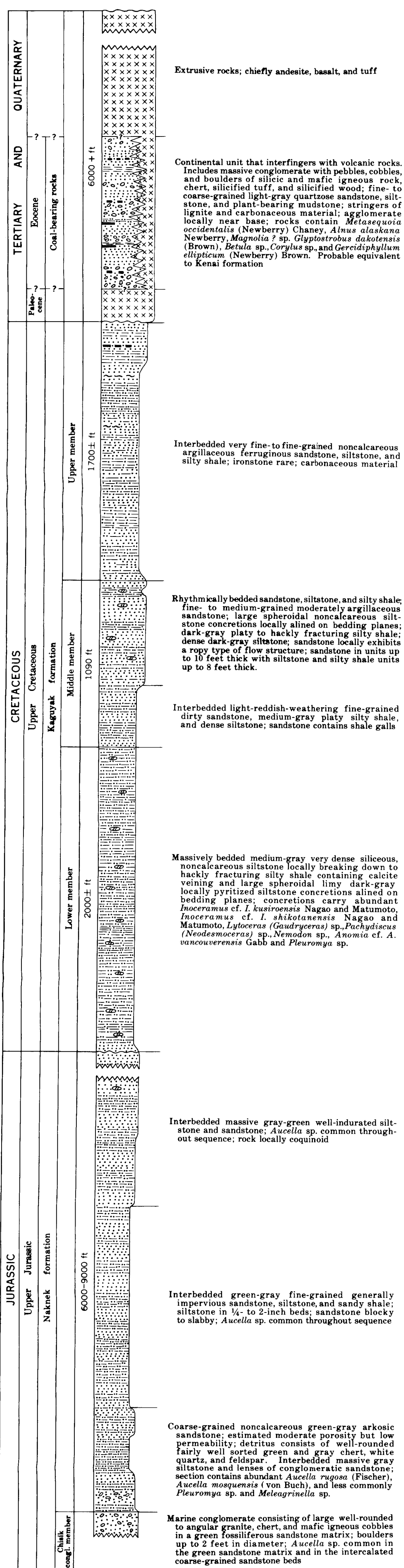
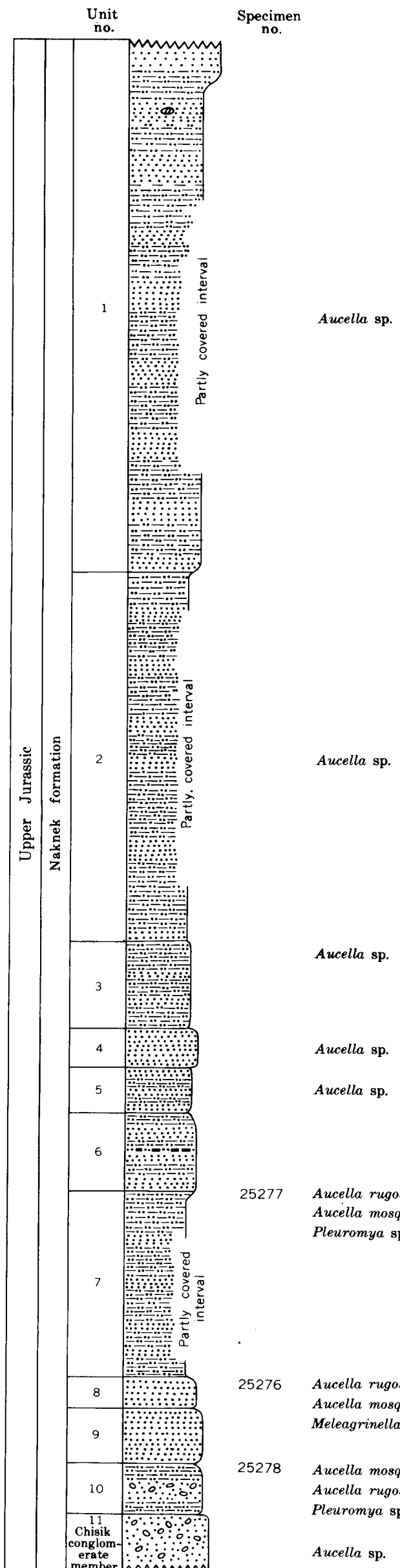


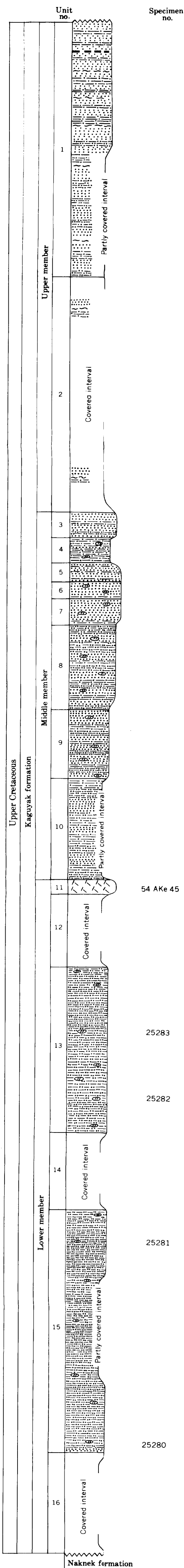
Generalized composite stratigraphic section
in the Katmai area, Alaska
Scale 1 in = 500 ft



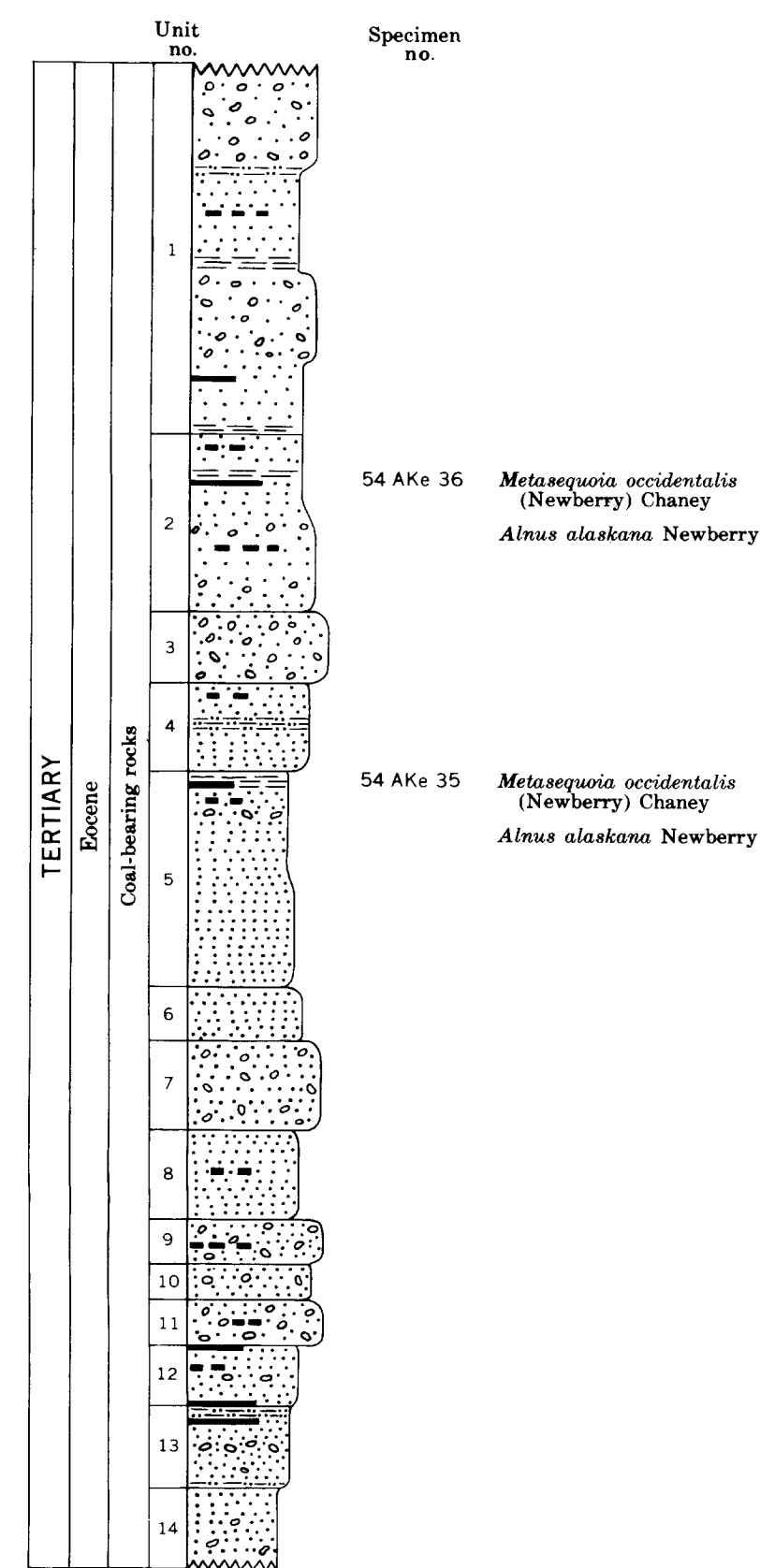
Grosvenor Lake
Stratigraphic section 1
Scale 1 in = 200 ft



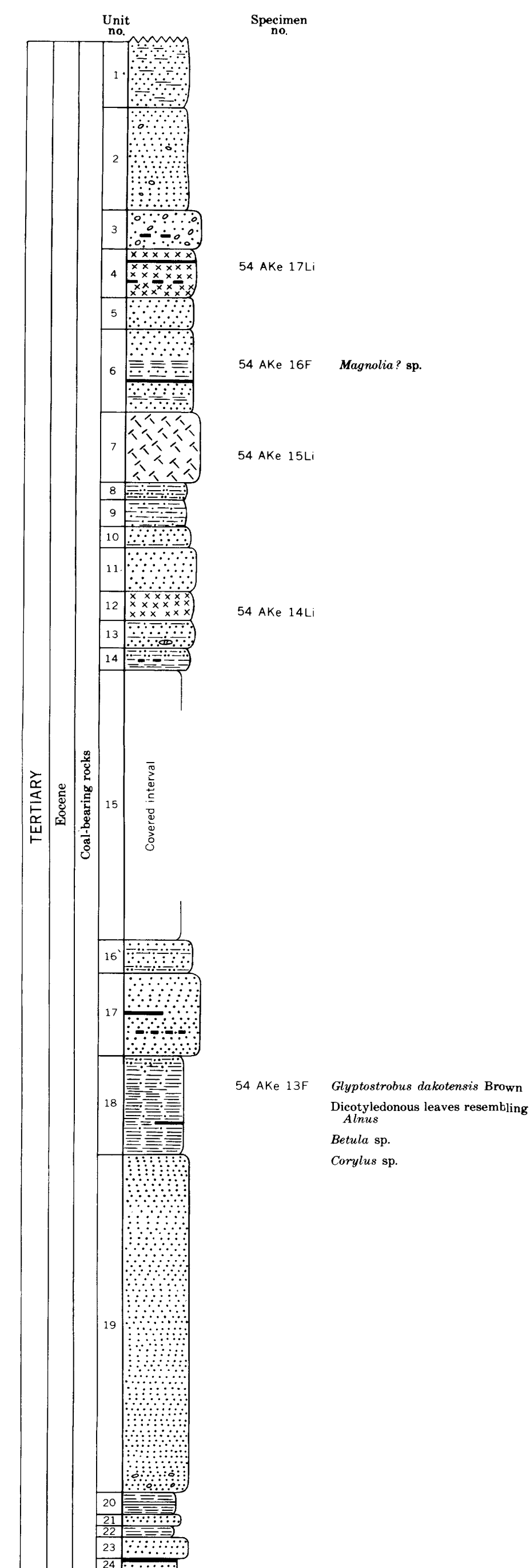
Kaguyak Bay
Stratigraphic section 2
Scale 1 in = 200 ft



Cape Nukshak
Stratigraphic section 3
Scale 1 in = 100 ft



Geographic Harbor
Stratigraphic section 4
Scale 1 in = 20 ft



EXPLANATION

