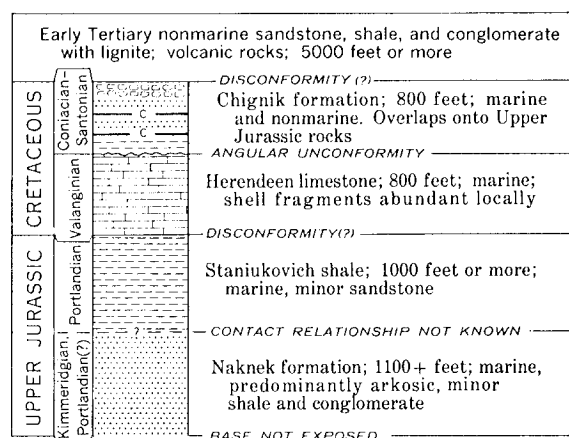


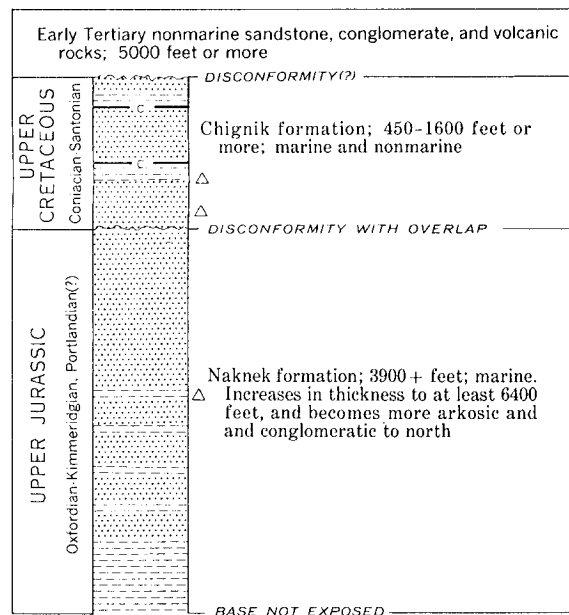
HERENDEEN BAY AREA

Modified from Atwood (1911, p. 33-71) and Inlay (1952, p. 978)



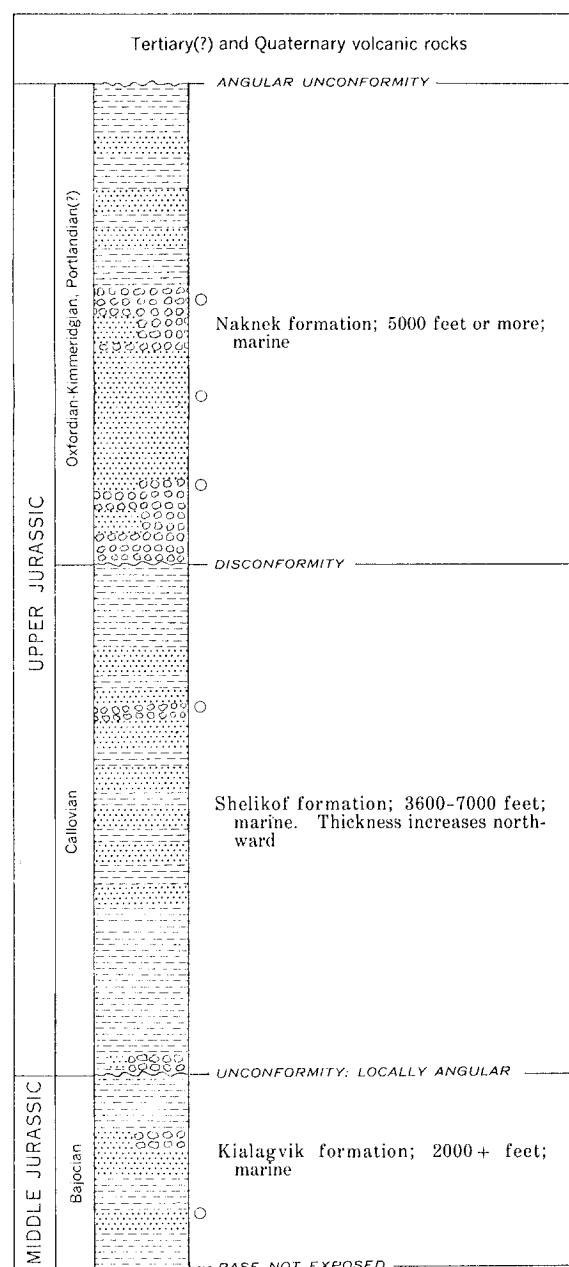
CHIGNIK-ANIACHAK AREA

Modified from Knappen (1929, p. 183-192) and Keller and Cass (1956, pl. 2)



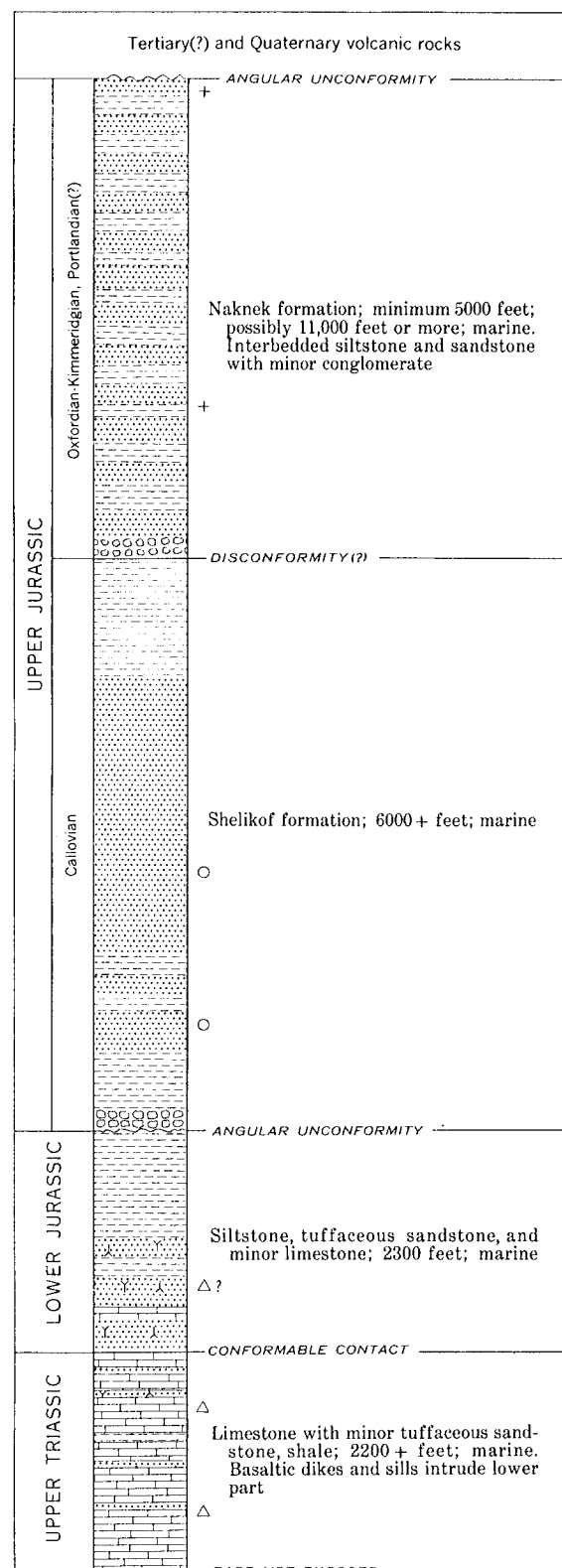
KANATAK DISTRICT, WIDE BAY TO MT. PEULIK

Modified from Capps (1922, p. 91-107, fig. 5) and Kellum, Daviss, and Swinney (1945, fig. 2)



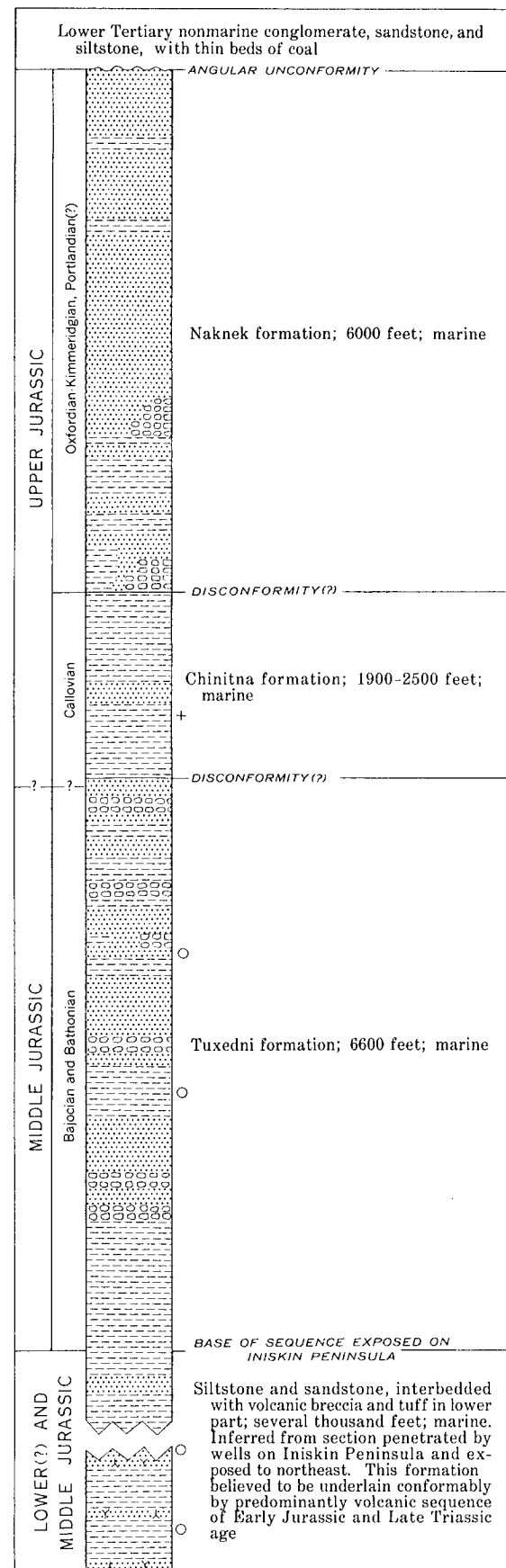
KANATAK DISTRICT, PUALE BAY TO KEJULIK VALLEY

Compiled from Smith and Baker (1924, p. 169, 178-185) Smith (1926, p. 66-73, fig. 2) and Kellum, Daviss, and Swinney (1945, fig. 2)



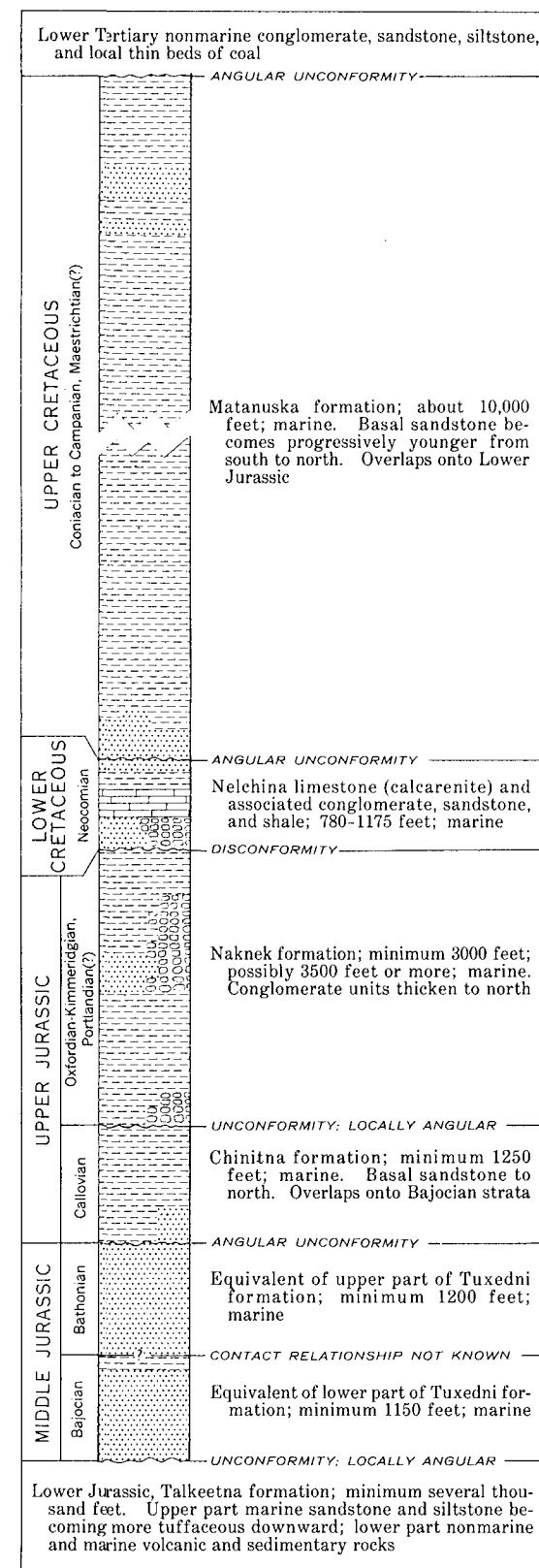
CHINITNA DISTRICT, INISKIN PENINSULA

Modified from Kirschner and Minard (1949) and Hartsock (1954)



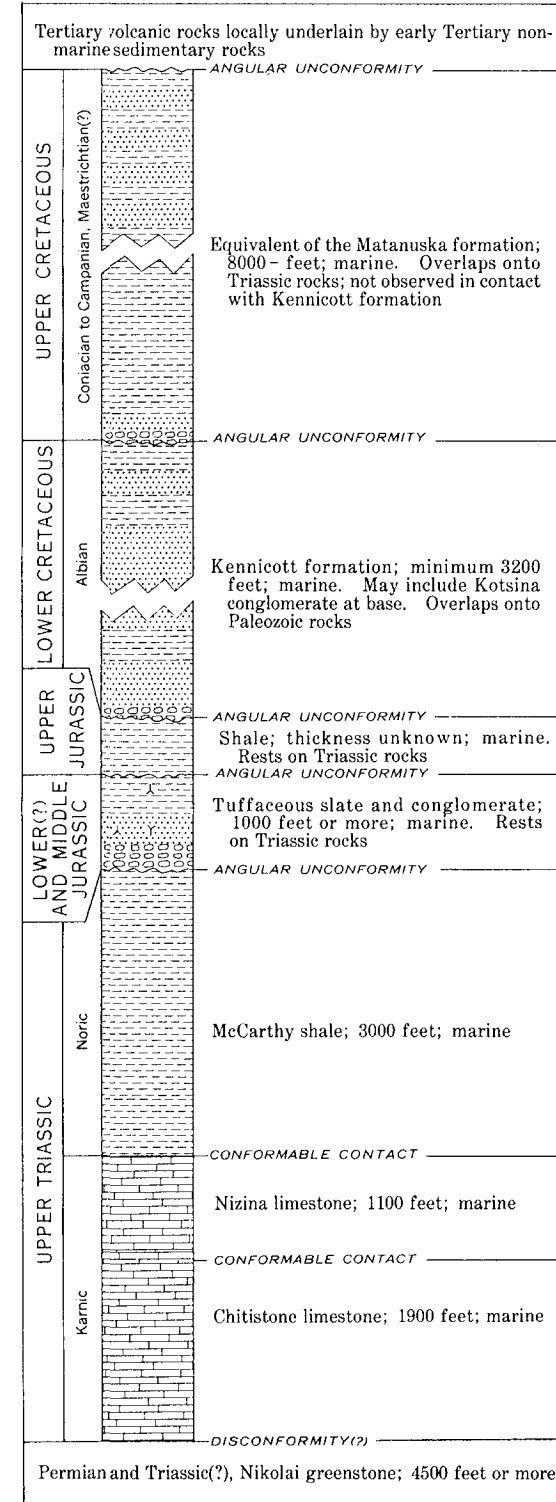
NELCHINA AREA, COMPOSITE SECTION

Compiled by Arthur Grantz, 1955



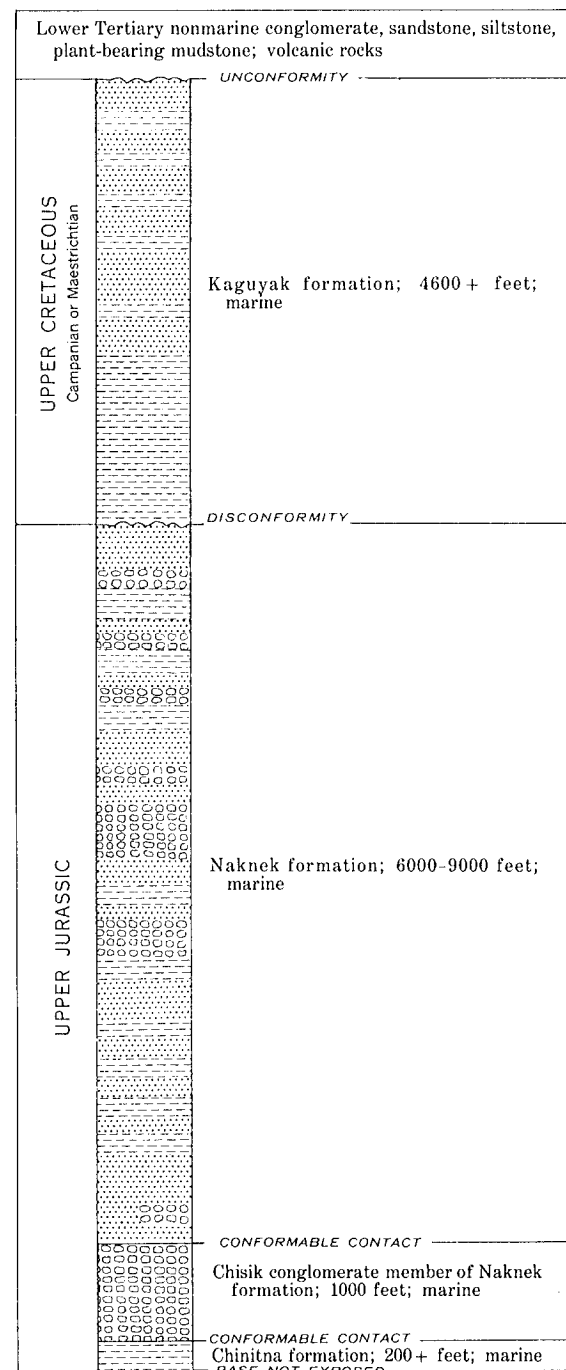
CHITINA VALLEY, COMPOSITE SECTION

Compiled from Moffit (1938, p. 37-98) and Inlay and Reeside (1954, p. 229-231, chart)



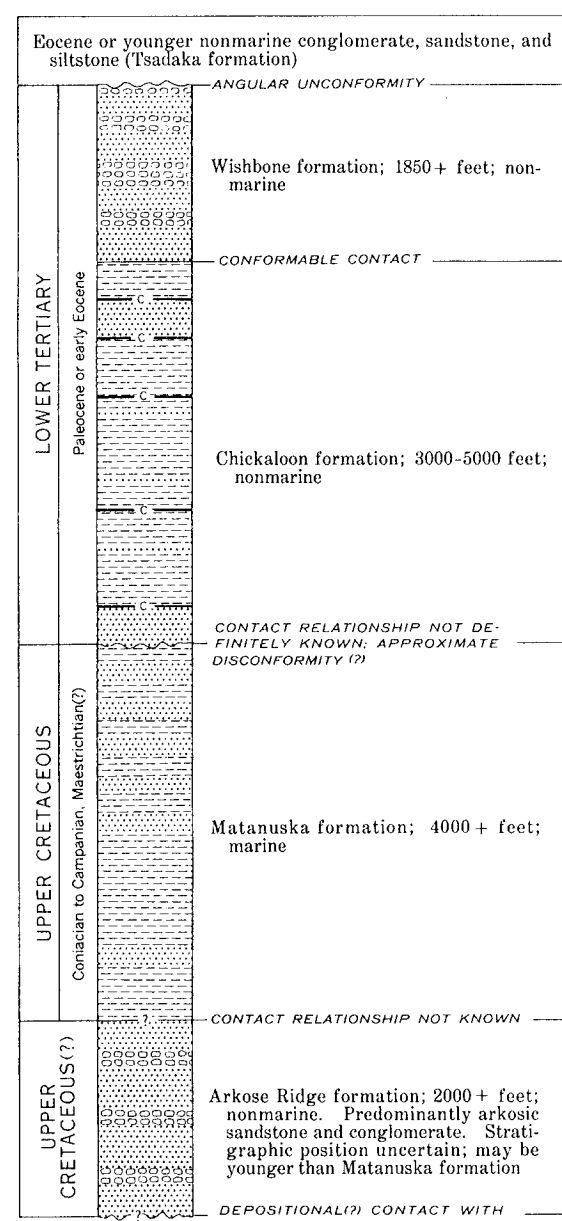
KATMAI-KAMISHAK AREA

Compiled from Keller and Reiser (1969) and Mather (1925, p. 168-169)



MATANUSKA VALLEY, WISHBONE HILL AREA

Compiled from Barnes and Payne (1956, p. 10-20) and Martin and Katz (1912, p. 34)



EXPLANATION

