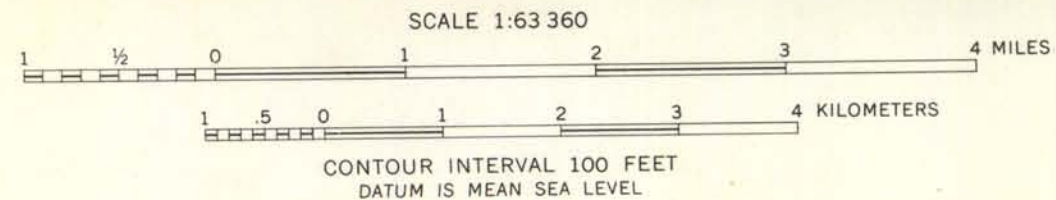
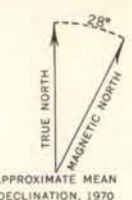
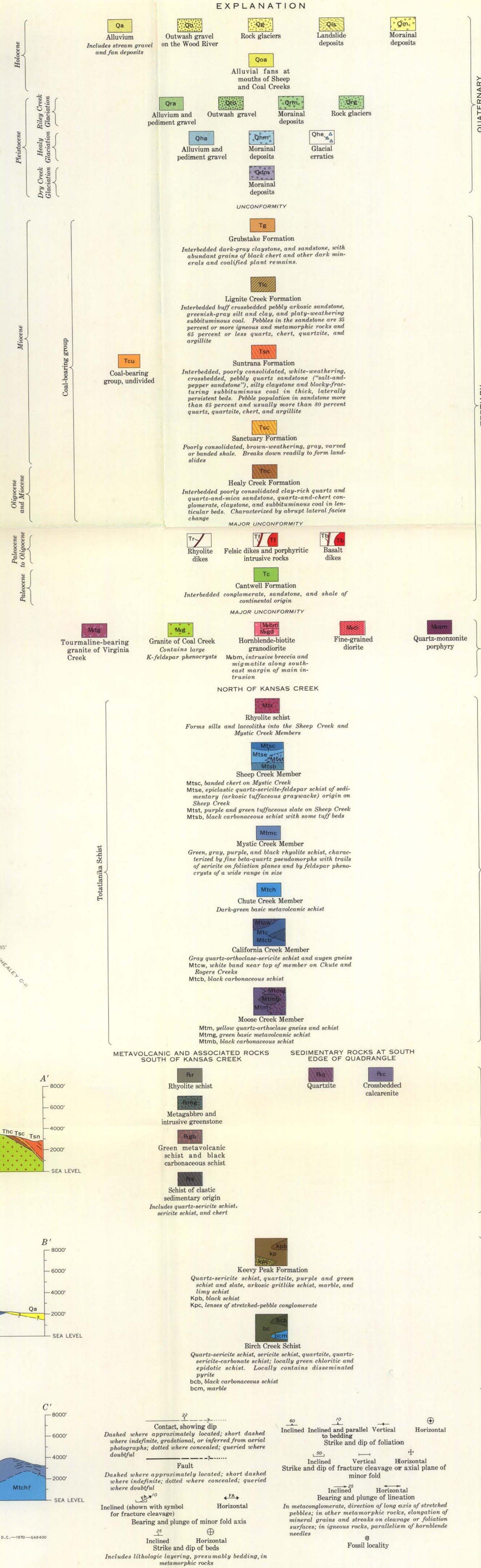




Base by U.S. Geological Survey, 1964  
10,000-foot grid based on Alaska  
coordinate system, zone 4



Geology by Clyde Wahrhaftig, 1950, 1954, and 1957,  
R. A. Eckhart, 1950, and Allan Cox, 1954,  
assisted by Winton Bakke, Kirk Bryan, Jr., and Allan Cox,  
1950, Joel Swanson, 1954, and R. E. Zartman, 1957



# GEOLOGIC MAP OF THE HEALY D-2 QUADRANGLE, ALASKA

By  
Clyde Wahrhaftig  
1970