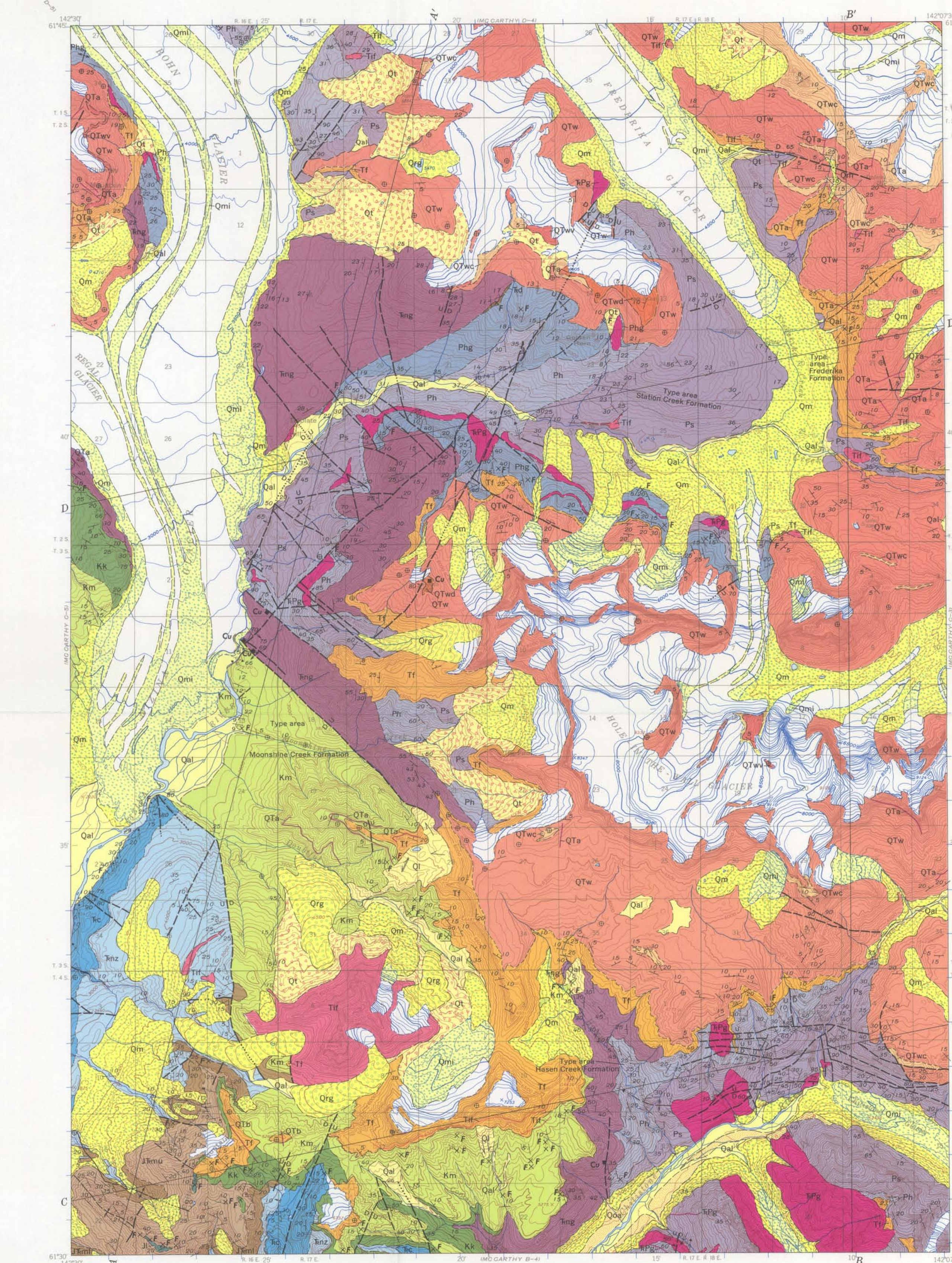
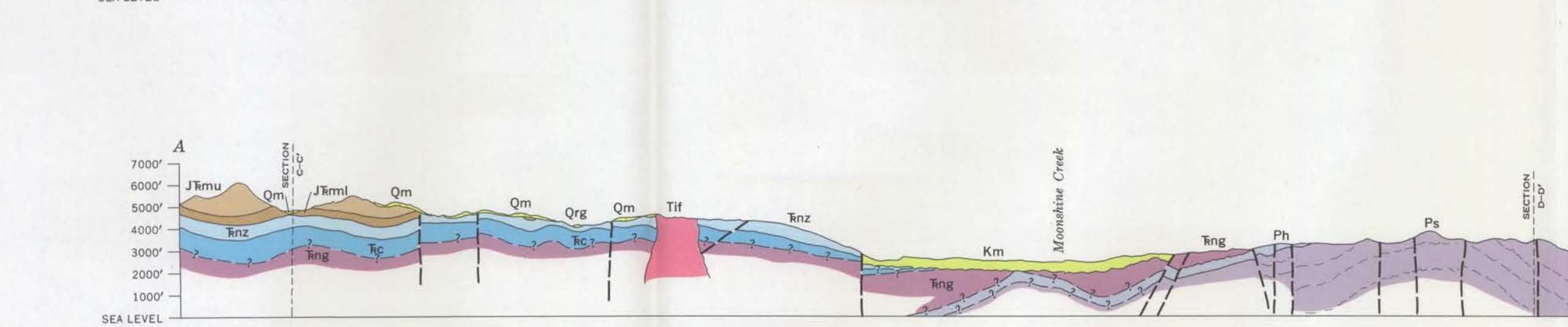
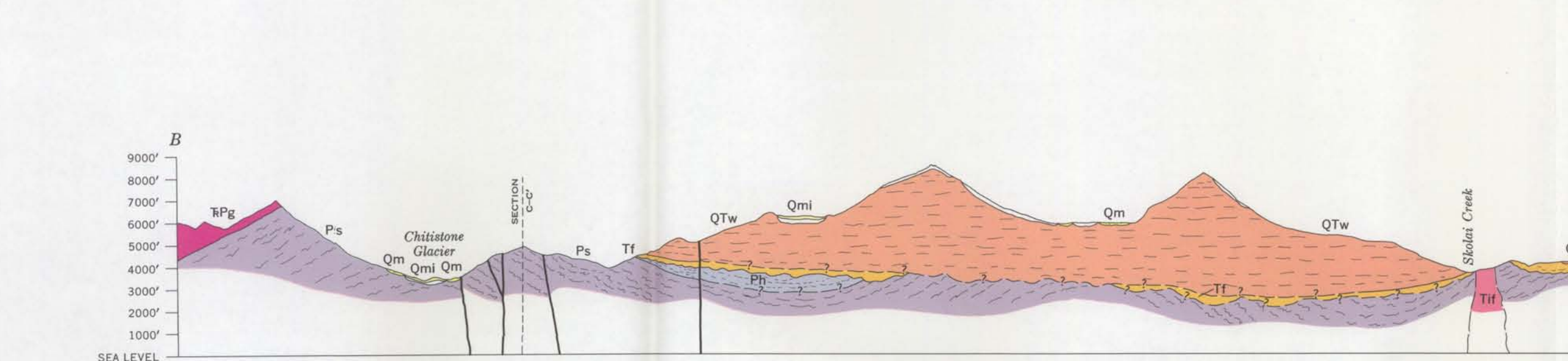
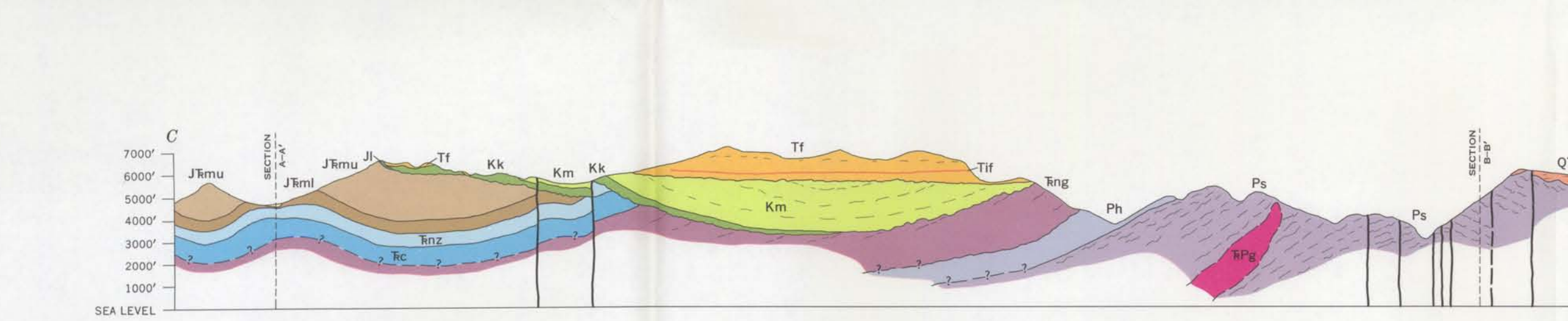
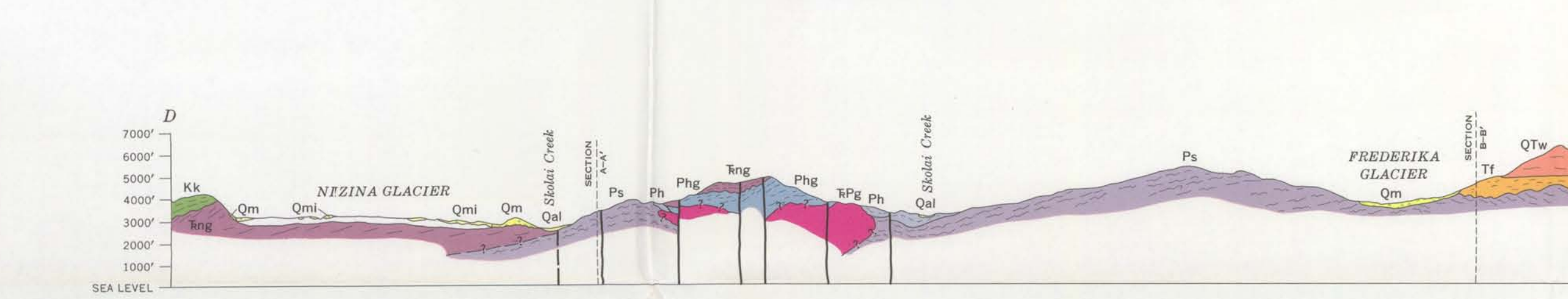


GENERALIZED COLUMNAR SECTION

Table with columns: SYSTEM, SERIES, STAGE, DISTANCE FROM BASE OF SECTION, LITHOLOGY, GROUP FORMATION, MEMBER AND (OR) LENTIL, DESCRIPTION, MAIN MEGAFOSSILS. Rows include Quaternary, Tertiary (Miocene), Cretaceous (Upper, Lower), Jurassic (Toarcian, Rhaetian, Norian, Carnian), Triassic (Middle, Upper), Permian (Lower, Middle), and Permian(?) formations like Station Creek, Hasen Creek, and Nikolai Greenstone.



Base by U.S. Geological Survey, 1959. SCALE 1:63 360. Geology by E. M. MacKevett, Jr., 1962-63, 1967; H. C. Berg, 1962; D. L. Jones, 1962, 1967; George Pfluger, 1962; and J. G. Smith, 1967.



EXPLANATION section containing symbols for surficial deposits, unconformities, hypabyssal rocks, and various geological units. Includes a legend for fossil identifications and symbols for faults and folds.

FOSSIL IDENTIFICATIONS
(By members of the U.S. Geological Survey unless indicated otherwise)
Tertiary leaves... J. A. Wolfe
Cretaceous invertebrates... D. L. Jones
Jurassic invertebrates... R. W. Imhry
Triassic invertebrates... N. J. Silberling, U.S. Geological Survey and Stanford University
Permian brachiopods... E. E. Grant
Permian gastropods... E. L. Yochelson

GEOLOGIC MAP OF THE MCCARTHY C-4 QUADRANGLE, ALASKA

By
E. M. MacKevett, Jr.
1970