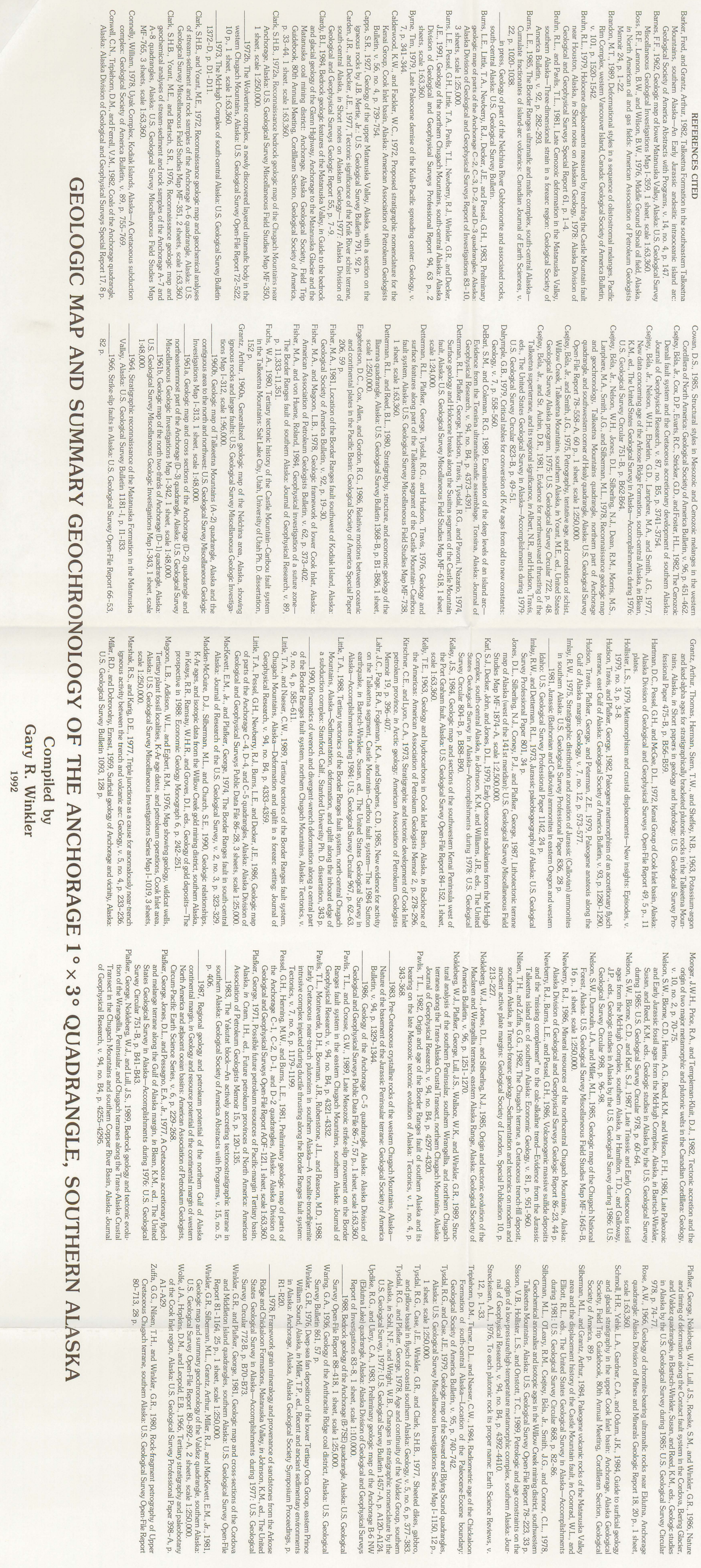
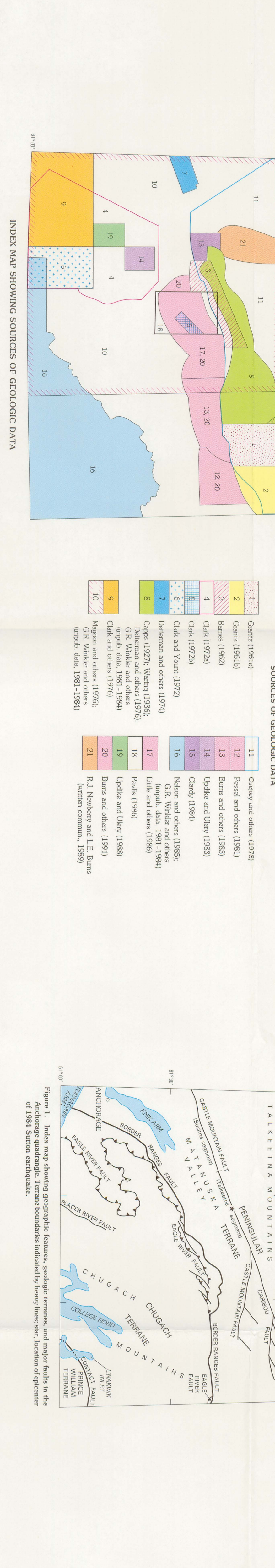
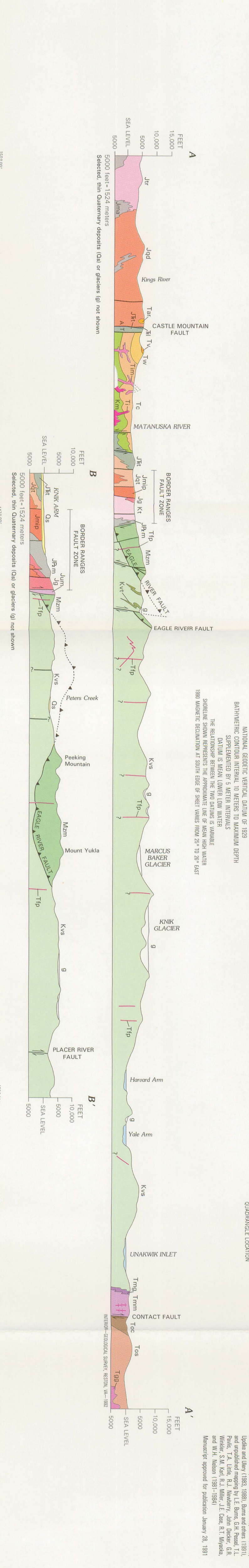




Map 1. Geologic map of the Anchorage 1° x 3° quadrangle, southern Alaska. The map shows various geological features including the Chukchi Sea, Kuskokwim Bay, and the Anchorage area. It includes a detailed legend with symbols for different geological units and a scale bar.



GEOLOGIC MAP AND SUMMARY GEOCHRONOLOGY OF THE ANCHORAGE 1° X 3° QUADRANGLE, SOUTHERN ALASKA

Compiled by Gary R. Winkler 1992

Table 1. Summary of geologic units and geochronology for the Anchorage 1° x 3° quadrangle, southern Alaska. The table lists various geological units and their corresponding geochronology. It includes columns for unit name, age, and other relevant information.

Unit Name	Age	Geochronology	Notes
1. Tertiary	20.1-16.6 Ma	20.1-16.6 Ma	20.1-16.6 Ma
2. Quaternary	0.0-0.2 Ma	0.0-0.2 Ma	0.0-0.2 Ma
3. Pleistocene	0.2-1.8 Ma	0.2-1.8 Ma	0.2-1.8 Ma
4. Holocene	0.0-0.1 Ma	0.0-0.1 Ma	0.0-0.1 Ma
5. Pliocene	3.0-5.0 Ma	3.0-5.0 Ma	3.0-5.0 Ma
6. Miocene	23.0-5.3 Ma	23.0-5.3 Ma	23.0-5.3 Ma
7. Oligocene	33.9-23.0 Ma	33.9-23.0 Ma	33.9-23.0 Ma
8. Eocene	56.0-33.9 Ma	56.0-33.9 Ma	56.0-33.9 Ma
9. Paleocene	66.0-56.0 Ma	66.0-56.0 Ma	66.0-56.0 Ma
10. Cretaceous	145.5-66.0 Ma	145.5-66.0 Ma	145.5-66.0 Ma
11. Jurassic	201.0-145.5 Ma	201.0-145.5 Ma	201.0-145.5 Ma
12. Triassic	252.0-201.0 Ma	252.0-201.0 Ma	252.0-201.0 Ma
13. Permian	299.0-252.0 Ma	299.0-252.0 Ma	299.0-252.0 Ma
14. Carboniferous	359.0-299.0 Ma	359.0-299.0 Ma	359.0-299.0 Ma
15. Devonian	419.0-359.0 Ma	419.0-359.0 Ma	419.0-359.0 Ma
16. Silurian	444.0-419.0 Ma	444.0-419.0 Ma	444.0-419.0 Ma
17. Ordovician	485.0-444.0 Ma	485.0-444.0 Ma	485.0-444.0 Ma
18. Silurian	444.0-419.0 Ma	444.0-419.0 Ma	444.0-419.0 Ma
19. Devonian	419.0-359.0 Ma	419.0-359.0 Ma	419.0-359.0 Ma
20. Carboniferous	359.0-299.0 Ma	359.0-299.0 Ma	359.0-299.0 Ma
21. Permian	299.0-252.0 Ma	299.0-252.0 Ma	299.0-252.0 Ma
22. Triassic	252.0-201.0 Ma	252.0-201.0 Ma	252.0-201.0 Ma
23. Jurassic	201.0-145.5 Ma	201.0-145.5 Ma	201.0-145.5 Ma
24. Cretaceous	145.5-66.0 Ma	145.5-66.0 Ma	145.5-66.0 Ma
25. Paleocene	66.0-56.0 Ma	66.0-56.0 Ma	66.0-56.0 Ma
26. Eocene	56.0-33.9 Ma	56.0-33.9 Ma	56.0-33.9 Ma
27. Oligocene	33.9-23.0 Ma	33.9-23.0 Ma	33.9-23.0 Ma
28. Miocene	23.0-5.3 Ma	23.0-5.3 Ma	23.0-5.3 Ma
29. Pliocene	3.0-0.2 Ma	3.0-0.2 Ma	3.0-0.2 Ma
30. Quaternary	0.0-0.2 Ma	0.0-0.2 Ma	0.0-0.2 Ma