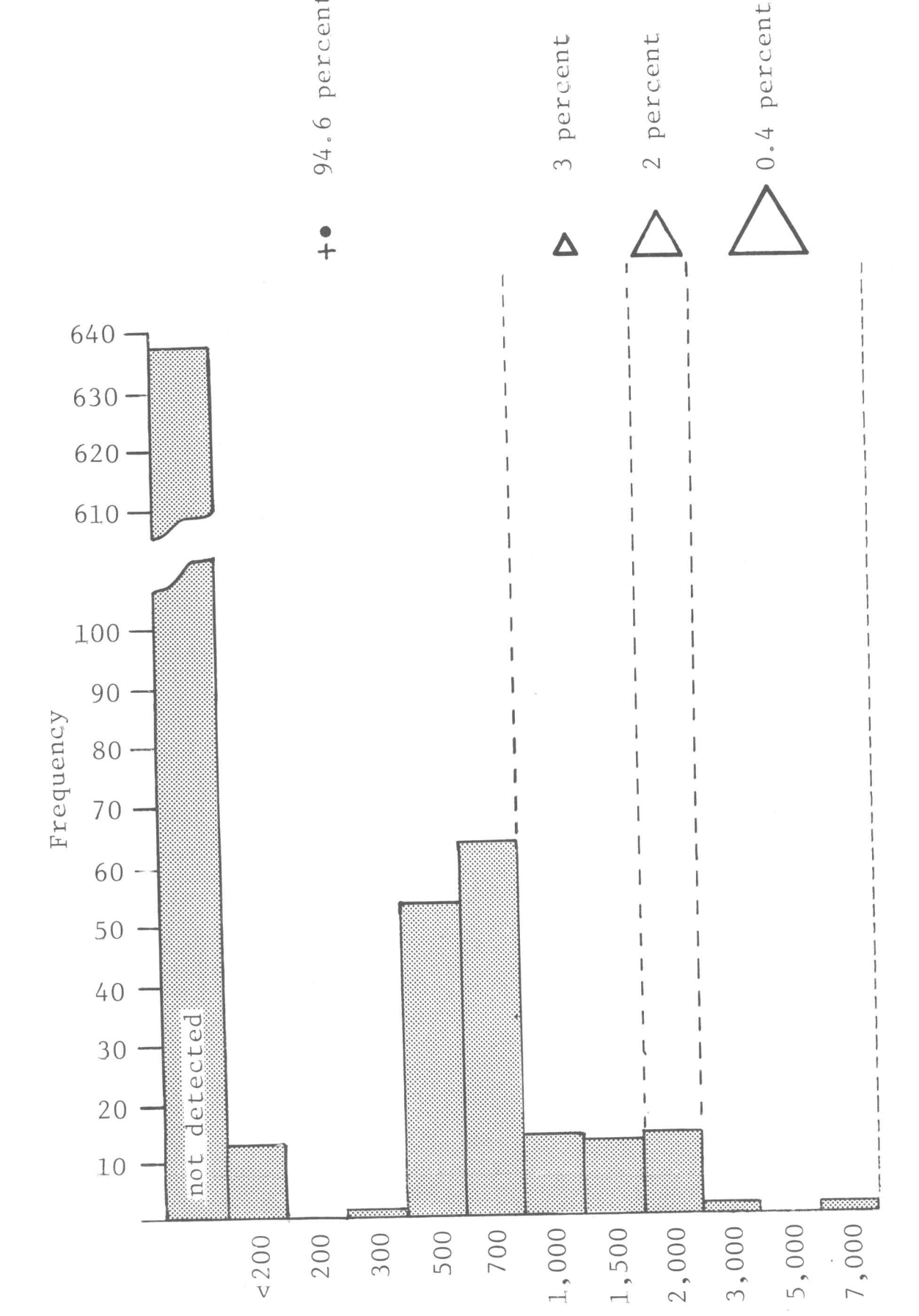
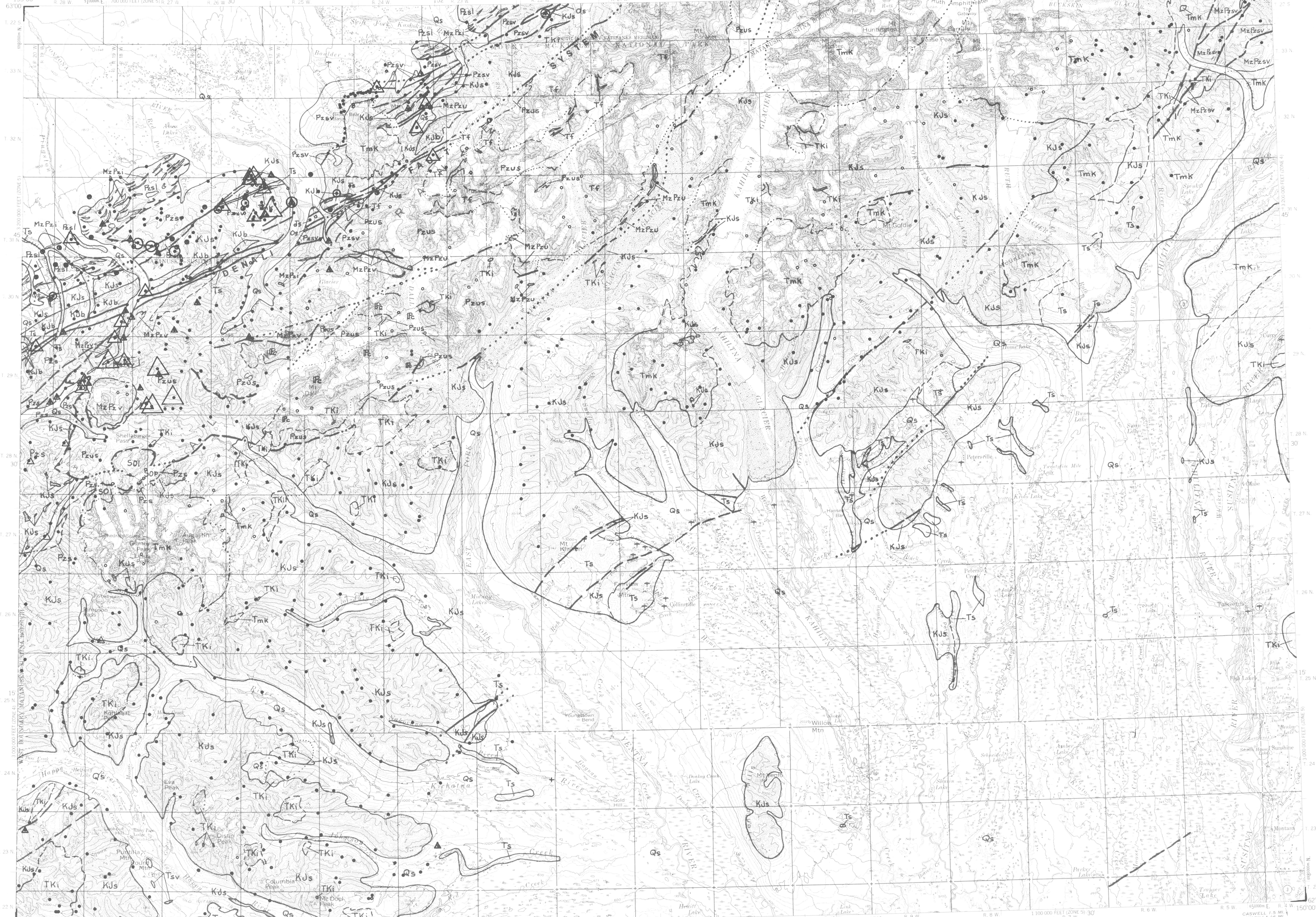
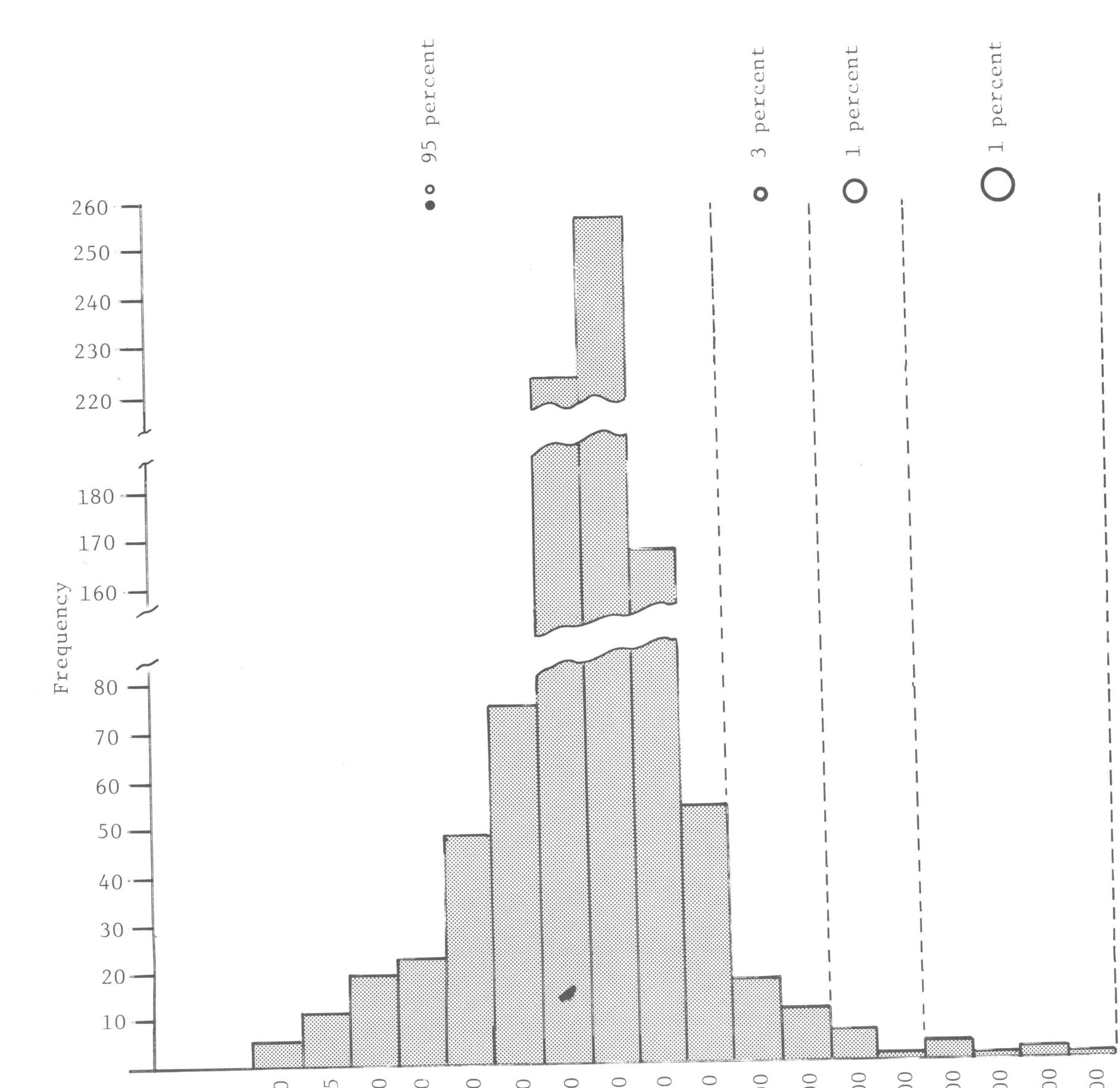


DEPARTMENT OF THE INTERIOR
UNITED STATES GEOLOGICAL SURVEY

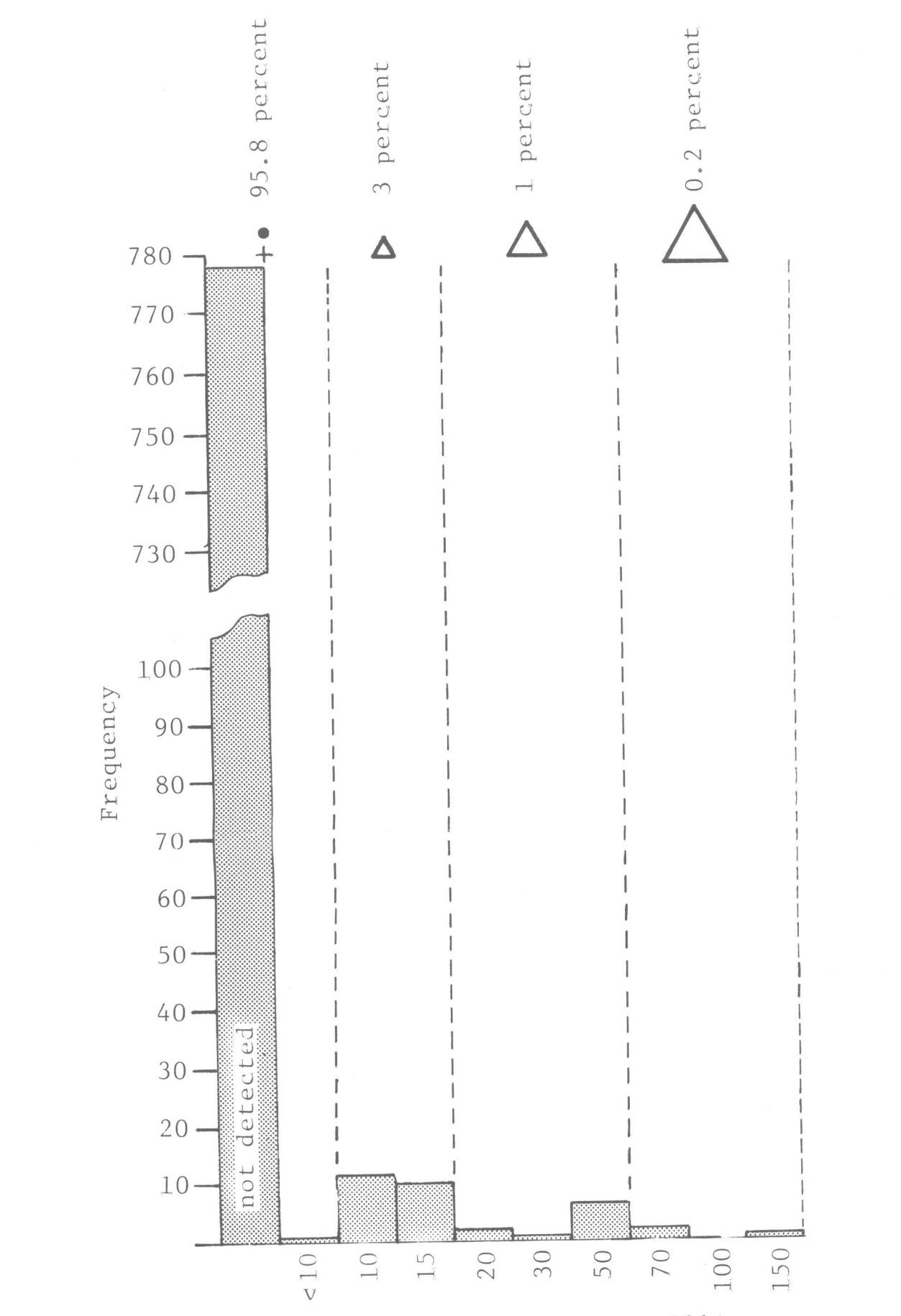
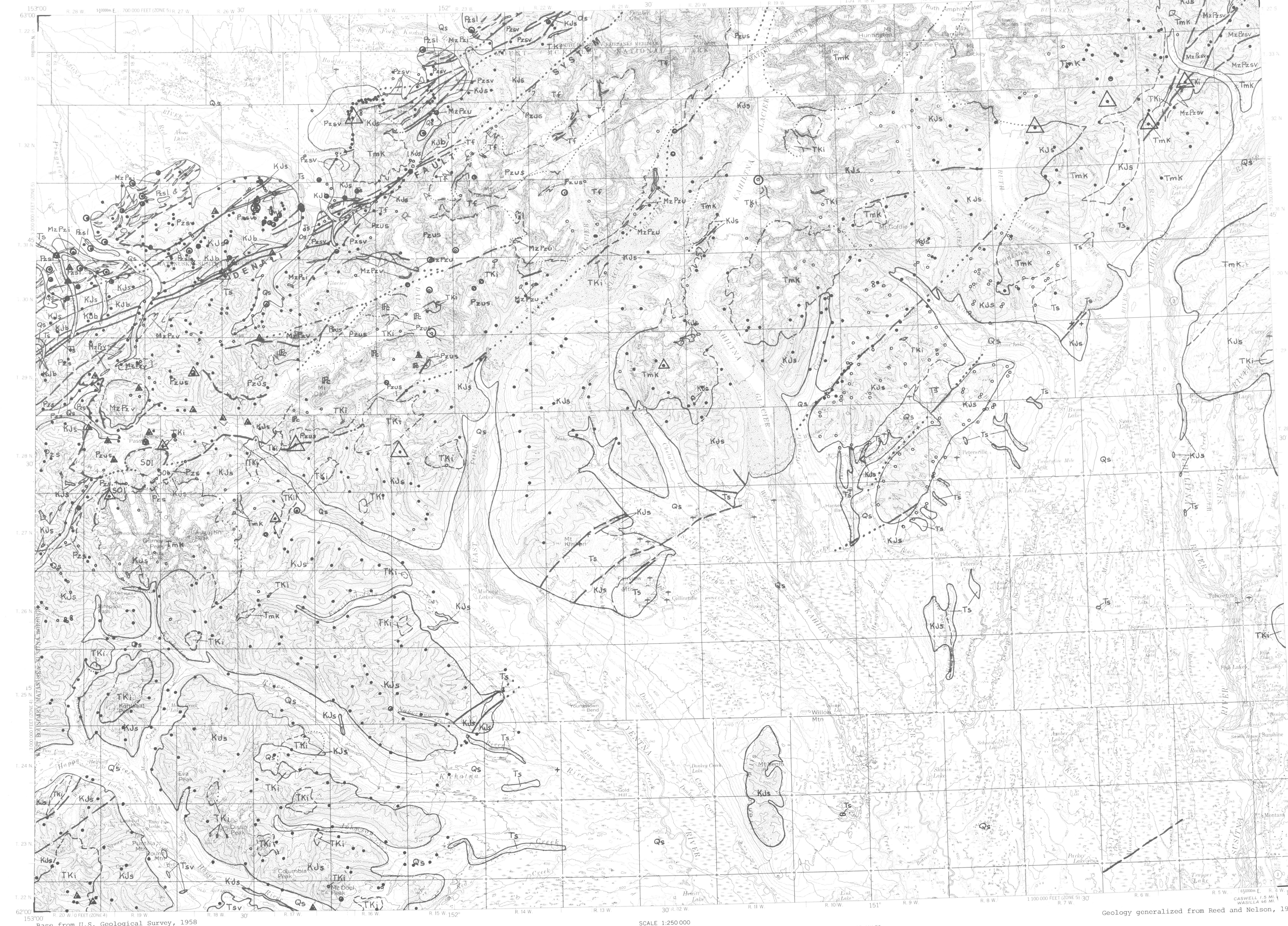


Zinc, in parts per million
ZINC CONTENT OF NONMAGNETIC HEAVY MINERAL
CONCENTRATES—Number of samples, 819.

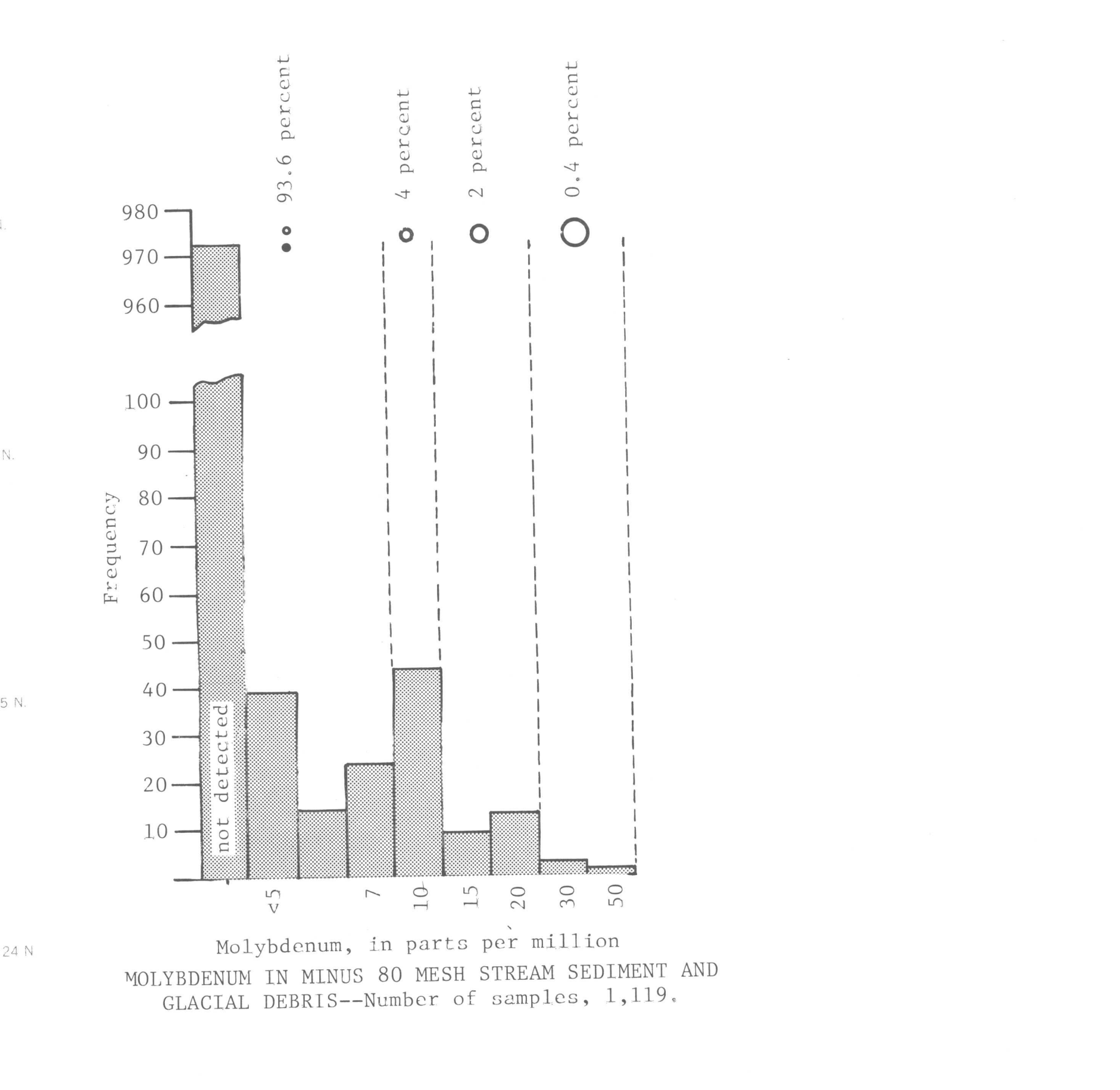


Zinc, in parts per million
ZINC CONTENT OF MINUS 80 MESH STREAM SEDIMENT AND GLACIAL DEBRIS—
Number of samples, 893.

GEOCHEMICAL AND GENERALIZED GEOLOGIC MAP SHOWING DISTRIBUTION AND ABUNDANCE OF ZINC



Molybdenum, in parts per million
MOLYBDENUM CONTENT OF NONMAGNETIC HEAVY MINERAL
CONCENTRATES—Number of samples, 819.



Molybdenum, in parts per million
MOLYBDENUM IN MINUS 80 MESH STREAM SEDIMENT AND
GLACIAL DEBRIS—Number of samples, 1,119.

GEOCHEMICAL AND GENERALIZED GEOLOGIC MAP SHOWING DISTRIBUTION AND ABUNDANCE OF MOLYBDENUM
GEOCHEMICAL AND GENERALIZED GEOLOGIC MAPS SHOWING DISTRIBUTION AND ABUNDANCE
OF COPPER, LEAD, ZINC, AND MOLYBDENUM IN THE TALKEETNA QUADRANGLE, ALASKA

By
G. C. Curtin, R. C. Karlson, R. M. O'Leary, G. W. Day, and C. M. McDougal
1978

Please return to
MINERALS LIBRARY
A.D.G.G.S.