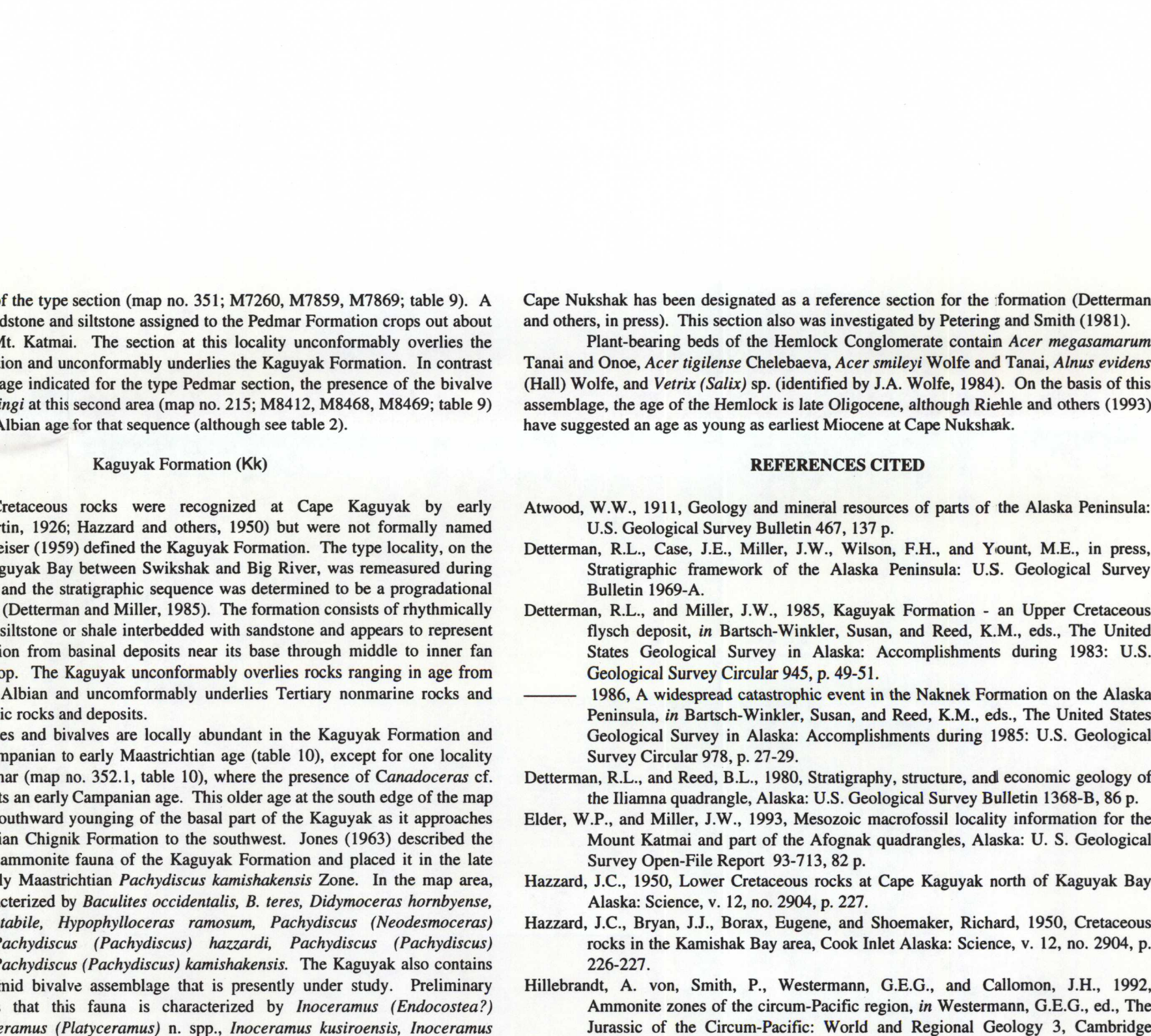
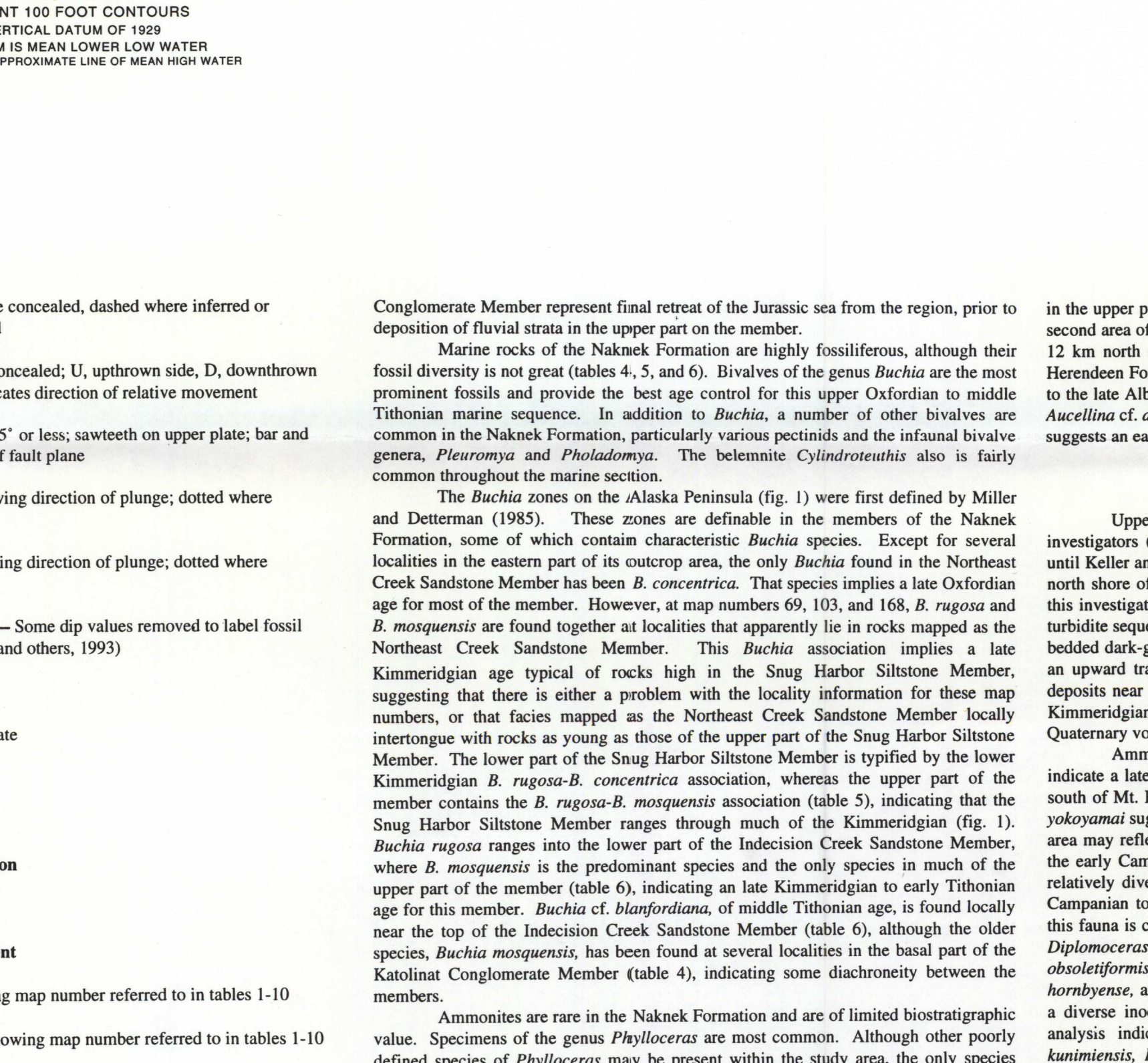
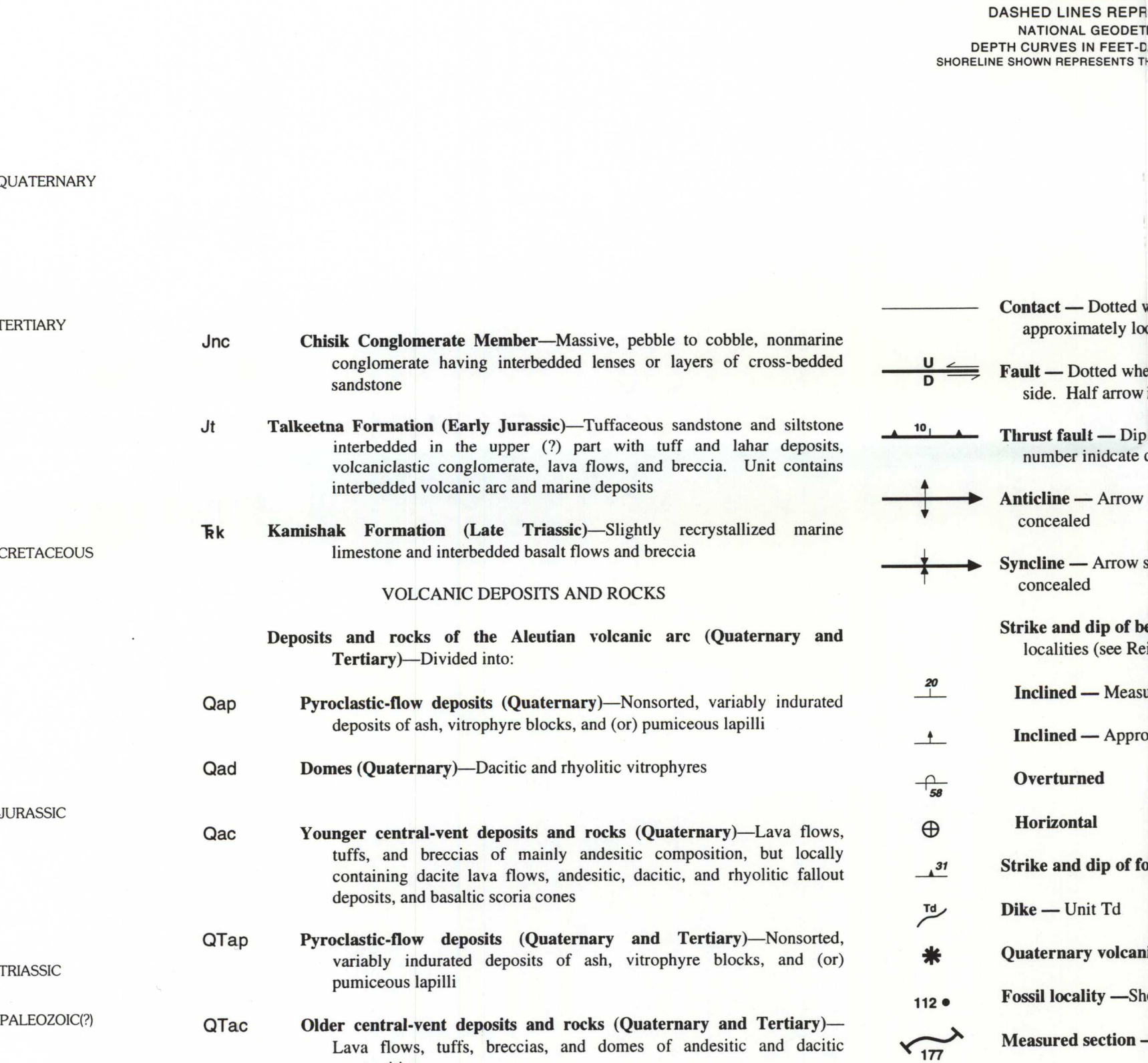
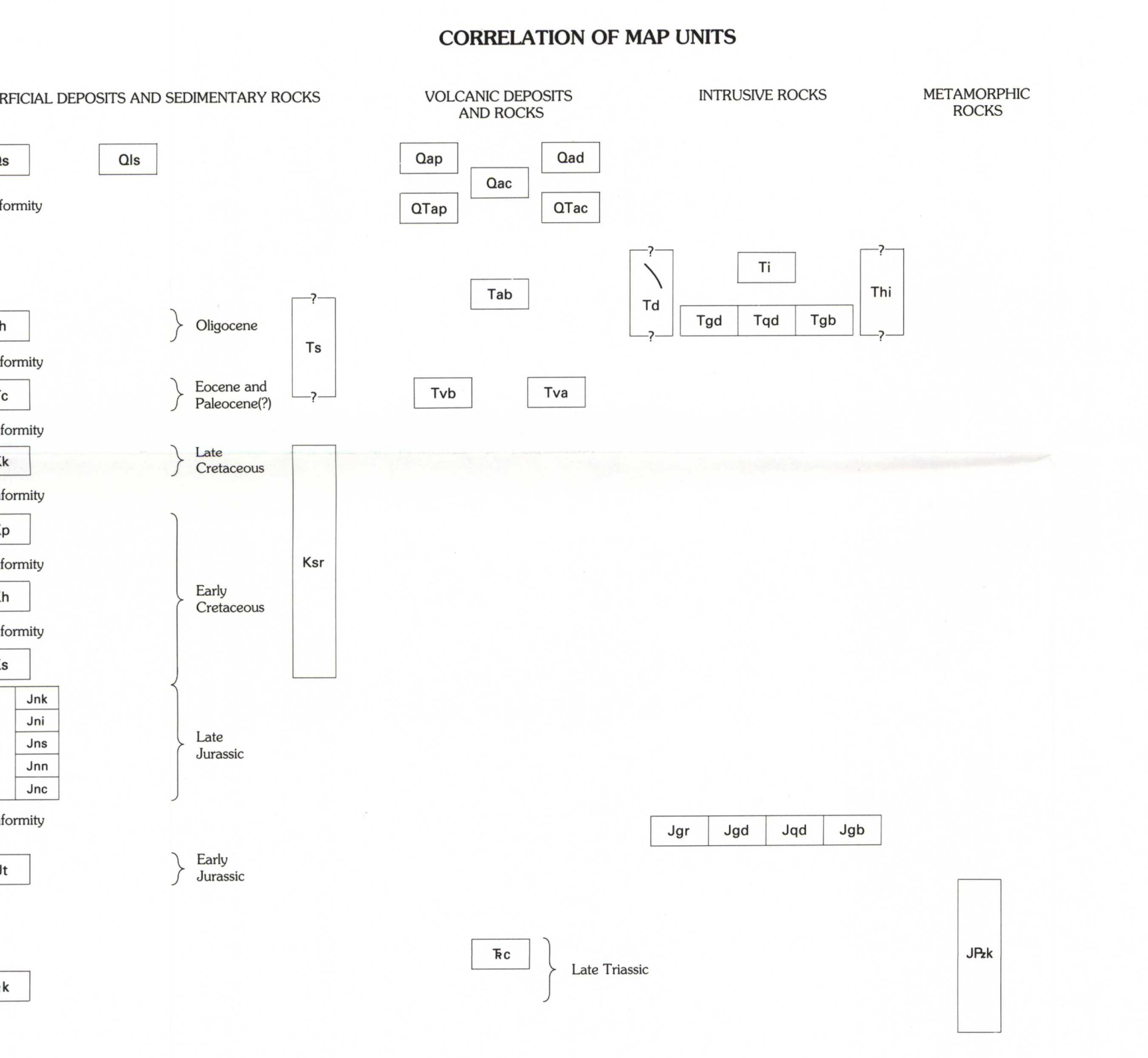


Table 1. Map numbers and associated U.S. Geological Survey Mesozoic locality numbers, sample numbers, and other data for the Mt. Katmai and adjacent parts of the Afognak and Naknek quadrangles, Alaska. This map number and other data are listed in the map and other data are listed in the map and other data are listed in the map.

Table 2. Probabilistic fossil locality information for the Mt. Katmai and adjacent parts of the Afognak and Naknek quadrangles, Alaska. This table lists the map number, locality number, sample number, and other data for each locality.

Table 3. Abbreviations used in the map and checklists. This table lists the abbreviations used for geological units, macrofossil localities, and other features on the map.



INTRODUCTION
This study forms one of a series of maps and reports on the geology and mineral resources of the Mt. Katmai National Park and Preserve, including the Afognak and Naknek quadrangles and adjacent parts of the Afognak and Naknek quadrangles. Macrofossil localities are listed in this report as found in Elder and Miller (1994).

PRE-QUATERNARY STRATIGRAPHIC SECTION OF THE MOUNT KATMAI AREA
The stratigraphic section of the Mt. Katmai area is shown in this section. It includes a list of units and their relative positions in the section.

OVERVIEW OF SEDIMENTARY ROCKS AND FOSSILS
This section provides an overview of the sedimentary rocks and fossils found in the area. It includes a list of units and their characteristics.

REFERENCES CITED
A list of references cited in the report, including works by Ansdorf, W.W., 1911; Dettmerman, R.L., 1963; and others.

Map Area
A map showing the location of the study area within the Afognak and Naknek quadrangles, Alaska Peninsula, Alaska.