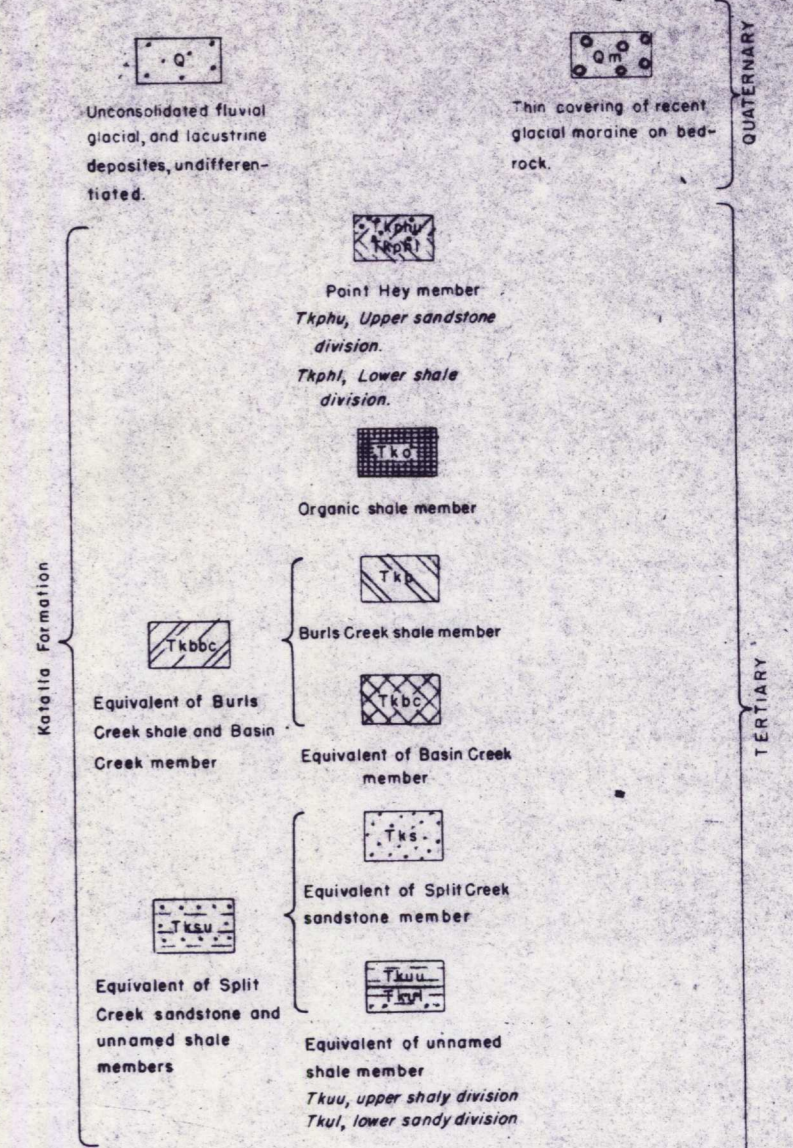
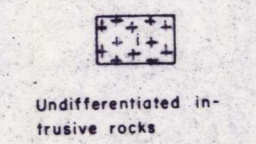


SEDIMENTARY ROCKS



IGNEOUS ROCKS



Fault, dashed where inferred, dotted where concealed
(U, upthrown side; D, downthrown side)

Geologic contact, dashed where inferred

Upper limit of recent glaciation

Strike and dip of beds

Strike and dip of overturned beds
(Overturned and upright beds are not differentiated on Mount Campbell because of lack of criteria for determining top and bottom of beds.)

Strike of vertical beds

Horizontal beds

Axis of anticline and direction of plunge

Axis of syncline and direction of plunge

Axis of overturned anticline

Axis of overturned syncline

X Oil seep

Xr Oil seep reported by Martin (1921)

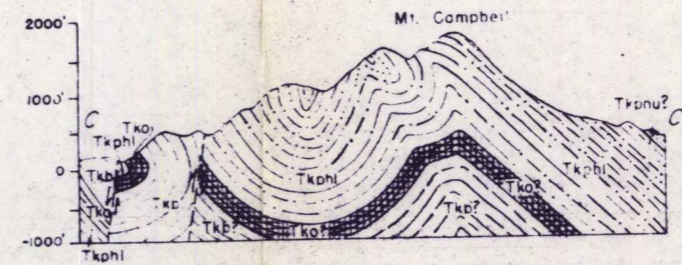
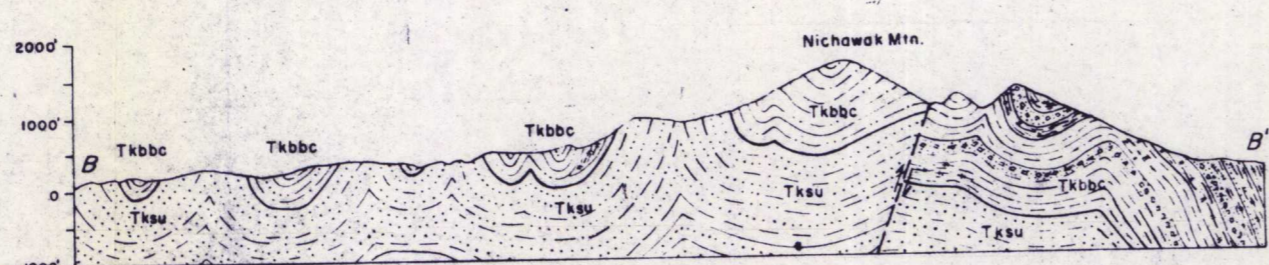
Location of well drilled for oil

Trail

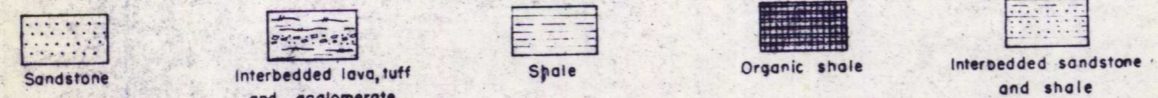
Building



Base map compiled by Alaskan Branch.
Planimetry from aerial photographs adjusted to major control points on the topographic map of the Controller Bay Region, Alaska, U. S. Geological Survey Bulletin 335, plate 2.
Vertical control from plate 2 and barometer readings.
Topography of northeast end of Nichawak mountain from sketch map by Don J. Miller.



EXPLANATION

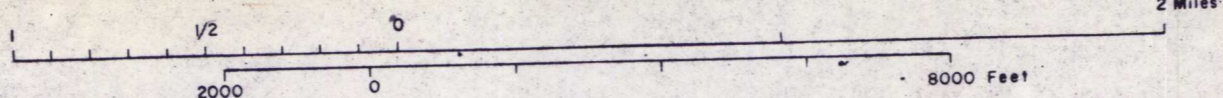


For explanation of letter symbols see map explanation

GEOLOGIC AND TOPOGRAPHIC MAP AND SECTIONS OF THE NICHAWAK AREA, ALASKA

BY DON J. MILLER, DARWIN L. ROSSMAN, AND CHARLES A. HICKCOX

APPROXIMATE SCALE



Contour interval 200 feet
Datum mean sea level
1951

This map is preliminary and has not been edited or reviewed for conformity with U. S. Geological Survey standards and nomenclature.