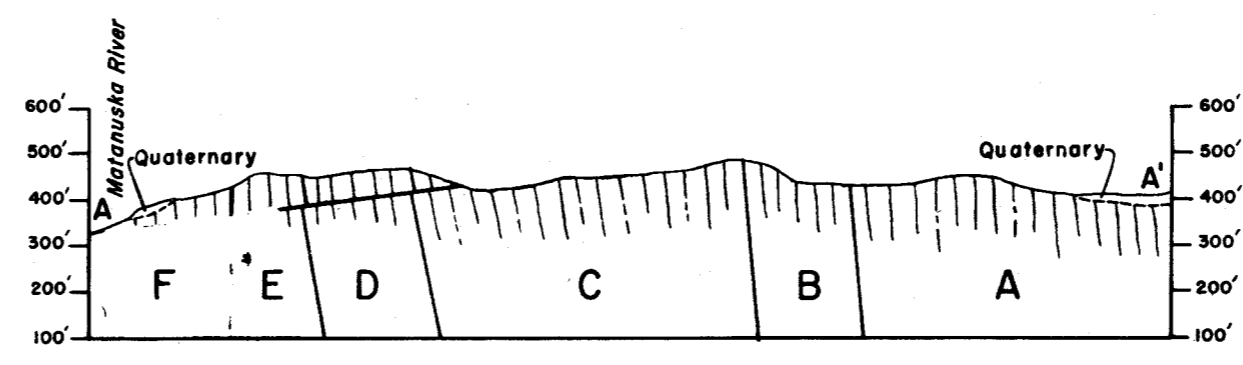
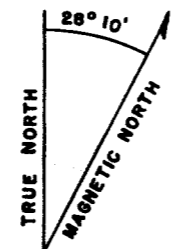


EXPLANATION

- | | | |
|---|---|--|
| <p>QUATERNARY</p> <p>Stream and glacial gravels and loess</p> | <p>Unit A
Largely black shale with a small amount of interbedded graywacke</p> <p>Unit B
Interbedded black shale and graywacke</p> <p>Unit C
Largely graywacke with a small amount of interbedded black shale</p> <p>Unit D
Largely black shale with a small amount of interbedded graywacke</p> <p>Unit E
Largely graywacke with small amount of interbedded black shale</p> <p>Unit F
Black shale</p> <p>Unit G
Interbedded black shale and graywacke</p> <p>Unit H
Graywacke</p> <p>Unit I
Largely black shale with a small amount of interbedded graywacke</p> <p>Unit J
Largely graywacke with a small amount of interbedded black shale</p> | <p>MATANUSKA FORMATION</p> <p>UPPER CRETACEOUS</p> |
|---|---|--|
-
- | | |
|---------|---|
| — | Observed contact |
| - - - | Indefinite contact |
| ↘ ↙ | Fault showing dip and relative movement |
| — ? — ? | Probable fault |
| ↘ ↙ | Strike and dip of beds |
| ■ | Building |



This map is preliminary and has not been edited or reviewed for conformity with U.S. Geological Survey standards and nomenclature.



GEOLOGIC MAP AND SECTION OF
HAYDITE SHALE AREA NEAR SUTTON, ALASKA



Contour Interval 50 Feet
Datum is mean sea level