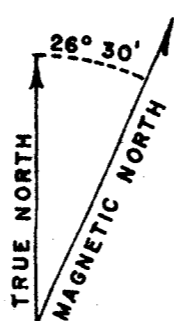
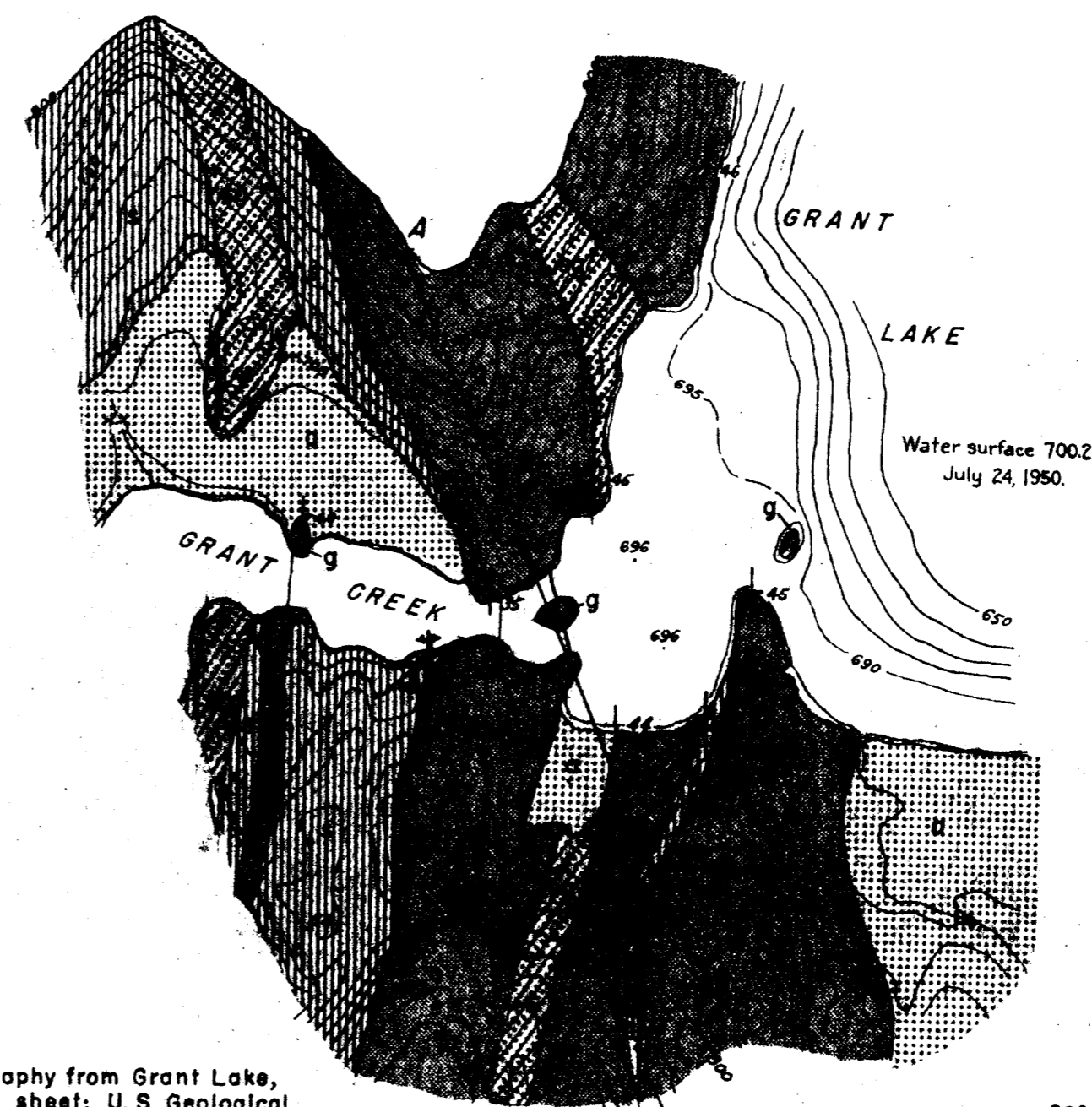


INDEX MAP



APPROXIMATE MEAN
DECLINATION 1950

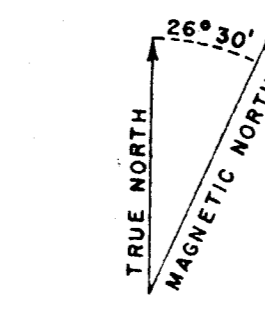


Topography from Grant Lake,
Alaska sheet; U. S. Geological
Survey

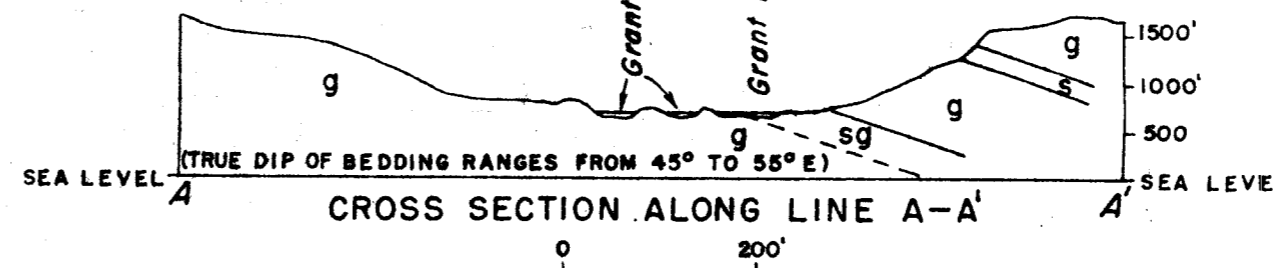
GRANT LAKE DAM SITE

200 100 0 200 400 600 FEET

Contour Interval 10 Feet
Datum is mean sea level



APPROXIMATE MEAN
DECLINATION 1950



CROSS SECTION ALONG LINE A-A'

EXPLANATION

UNCONSOLIDATED DEPOSITS



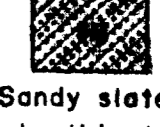
Alluvium

Gravel, cobbles and scattered boulders in a silt and sand matrix



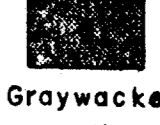
Slate

Black, well consolidated, thinly bedded and slabby slate. Includes minor amounts of sandy slate and graywacke in thin beds.



Sandy slate

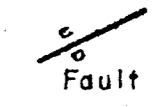
Gray to black, thin to thick bedded sandy slate. Breaks into irregular thick slabs along bedding and joint planes



Graywacke

Gray, fine to medium grained, hard and massive. Includes minor amounts of slate and sandy slate

Contact; dashed where inferred

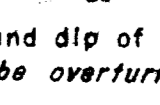


Fault

(U=upthrown side; D=downthrown side)

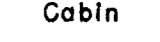


Anticline

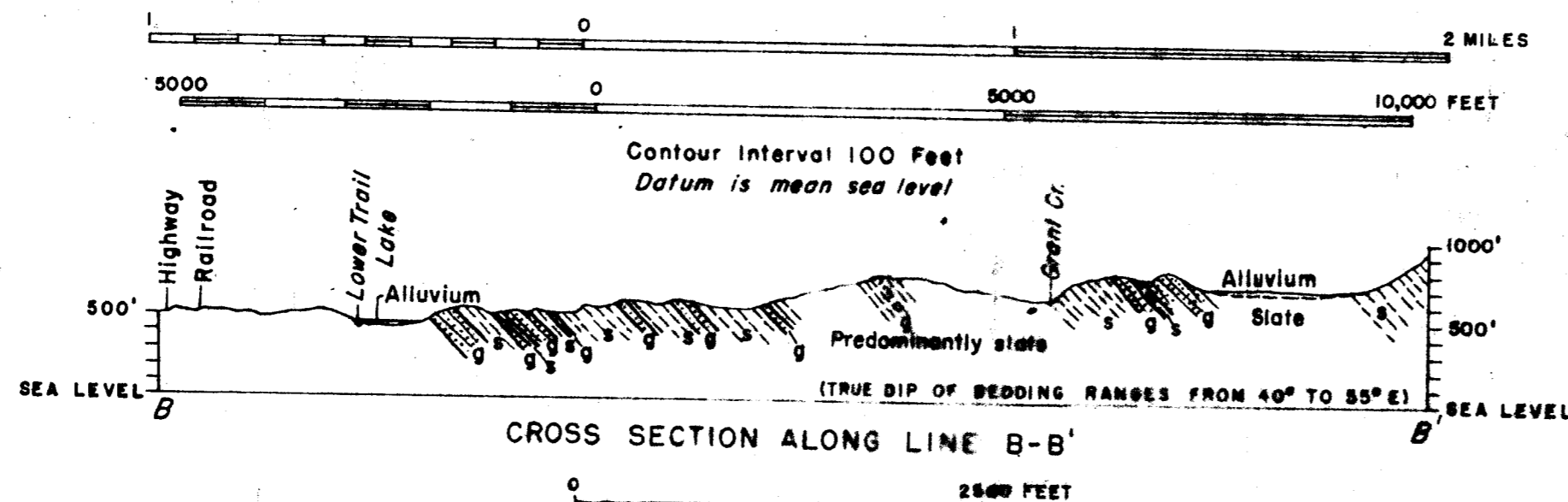
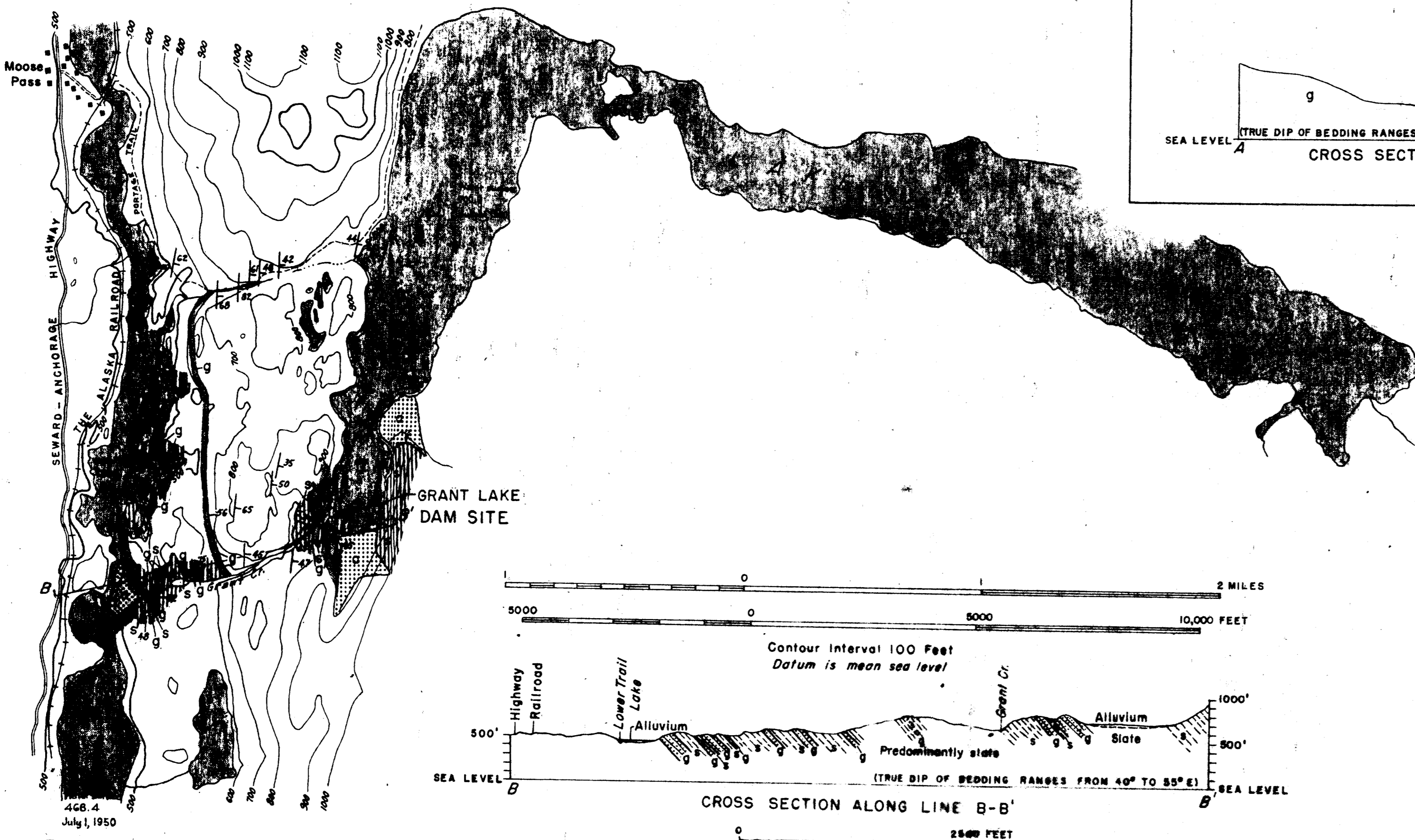


Strike and dip of bedding

(May be overturned)



Cabin



CROSS SECTION ALONG LINE B-B'

EXPLANATION

UNCONSOLIDATED DEPOSITS



Alluvium

Predominantly sand, gravel and cobbles with scattered boulders



Slate

Black, well consolidated, thinly bedded and slabby slate. Includes subordinate amounts of gray to black sandy slate, and minor amounts of graywacke



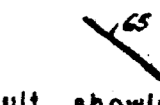
Graywacke

Gray, fine to medium grained, hard and massive.

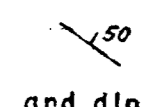


Interbedded slate and graywacke

Contact; dashed where inferred



Fault, showing dip



Strike and dip of bedding

(May be overturned)



Cabin

Topography modified from Grant Lake, Alaska sheet, scale 1:24,000, U. S. Geological Survey; Grant Lake Quadrangle, scale 1:50,000, Corps of Engineers, U. S. Army; and aerial photographs scale 1:40,000.

GEOLOGIC MAP OF GRANT LAKE POWER SITE, ALASKA

Geology by George Plafker
Mapped in August, 1952