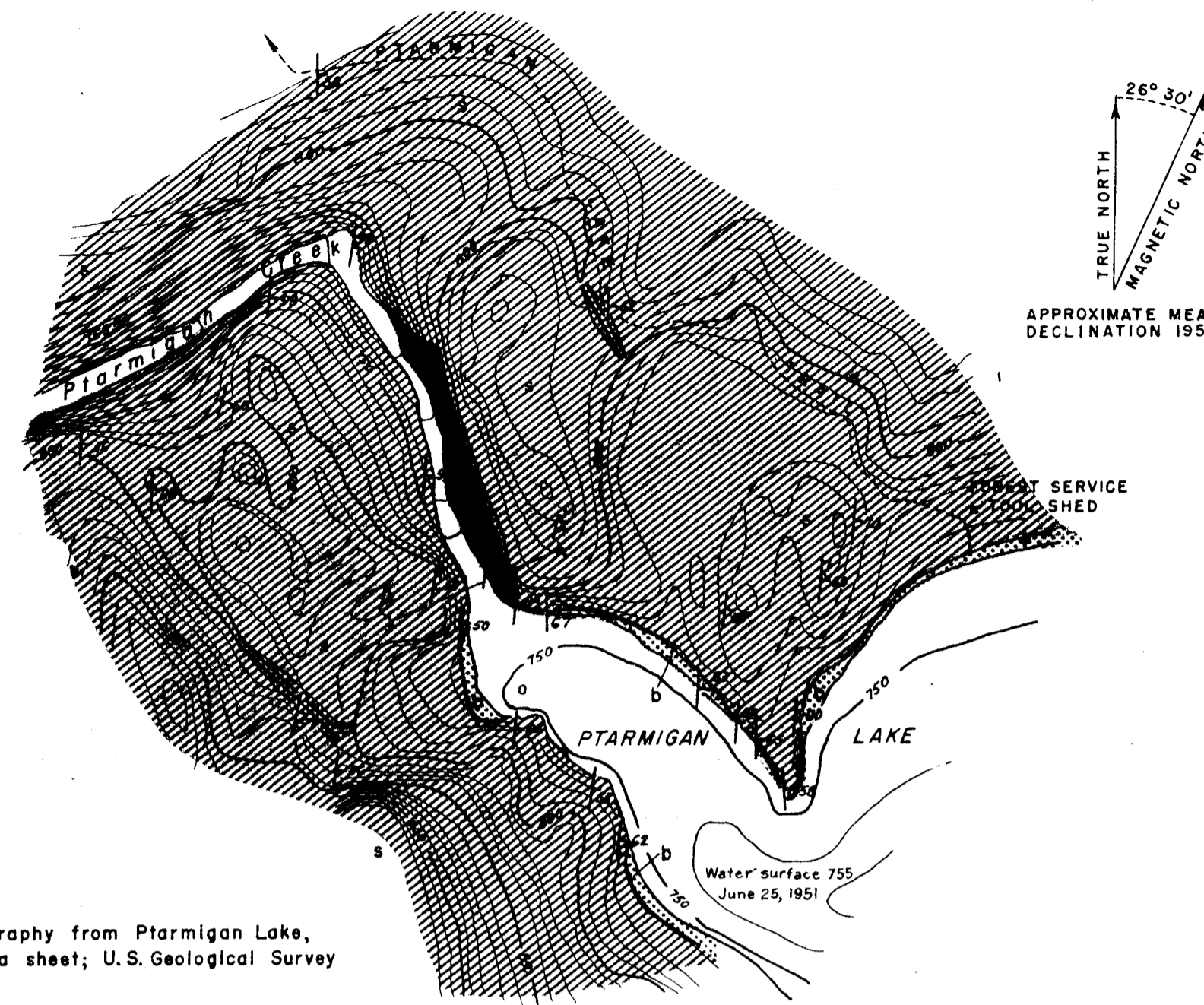


INDEX MAP



PTARMIGAN LAKE DAM SITE

200 100 0 200 400 600 FEET  
Contour Interval 10 Feet  
Datum is mean sea level

EXPLANATION

UNCONSOLIDATED DEPOSITS

Beach and stream deposits  
Predominantly subrounded slate shingle in sand and gravel sizes

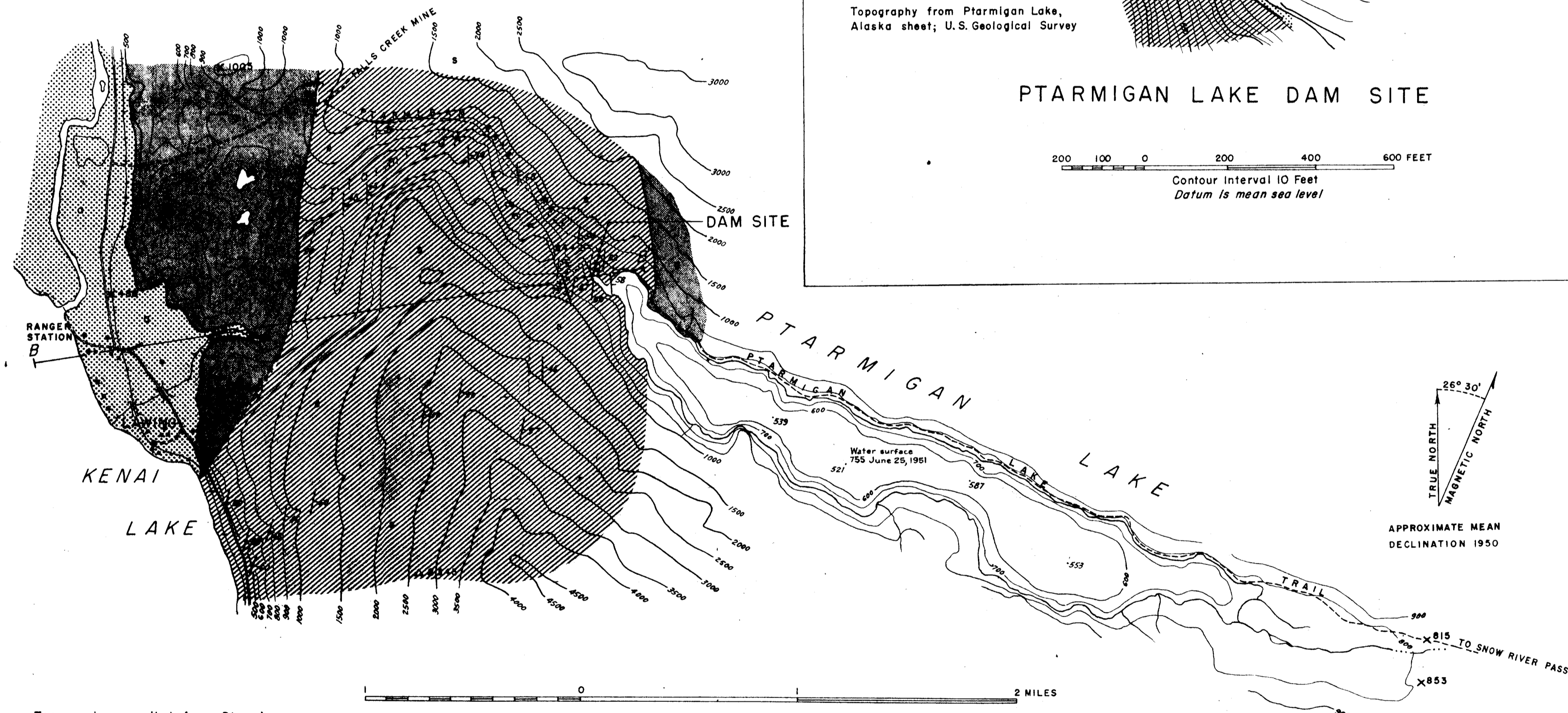
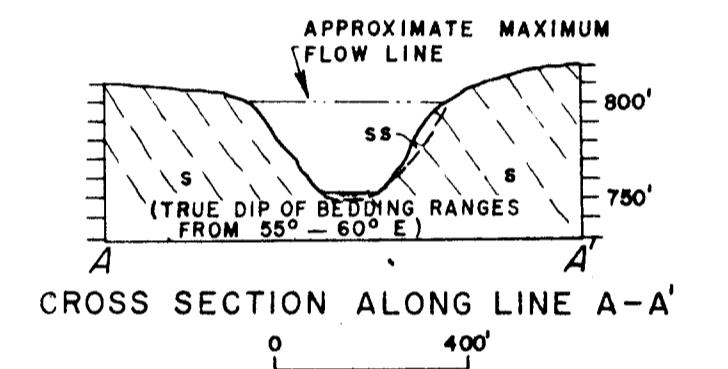
Slumped rock  
Slate with low dips due to slump and creep along creek bank

Slate  
Black, well consolidated, thinly bedded and slabby slate. Includes minor amounts of graywacke in lenses less than 2" thick

Contact; dashed where approximately located

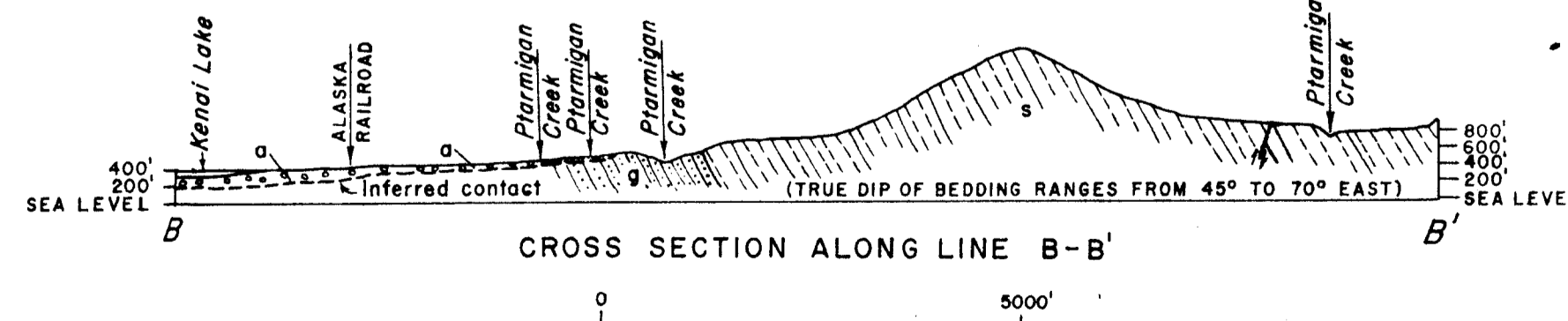
Strike and dip of bedding  
(May be overturned)

Possible spillway site



Topography compiled from Ptarmigan Lake, Alaska sheet, scale 1:24,000, U.S. Geological Survey; and the Grant Lake Quadrangle, scale 1:50,000, Corps of Engineers, U.S. Army.

5000 0 5000 10,000 FEET  
Contour Interval 100 Feet  
Datum is mean sea level



CROSS SECTION ALONG LINE B-B'

EXPLANATION

UNCONSOLIDATED DEPOSITS

Alluvium  
Predominantly silt, sand, pebble and cobble gravel

Slate  
Black, thinly bedded and slabby slate with minor amounts of graywacke in thin lenses

Graywacke  
Gray to black in color, fine to medium-grained, hard and massive. Interbedded with conglomerate and quartzite along north side of Ptarmigan Lake

Contact; dashed where approximately located; dotted where inferred

Fault showing dip  
(U, upthrown side; D, downthrown side)

Shear zone with slickensided fractures containing up to 1/2 inches of clay gouge

Strike and dip of bedding  
(May be overturned)

GEOLOGIC MAP OF PTARMIGAN LAKE POWER SITE, ALASKA

This report is preliminary and has not been edited or reviewed for conformity with U. S. Geological Survey standards and nomenclature.

Geology by George Plafker  
Mapped in August, 1952