

Base map compiled from following sources: Barling Glacier, Icy Bay, Mt. St. Elias and Yakutat published in 250,000 quadrangles; unpublished compilation from trimetrogram photographs; sketch maps compiled from vertical aerial photographs.

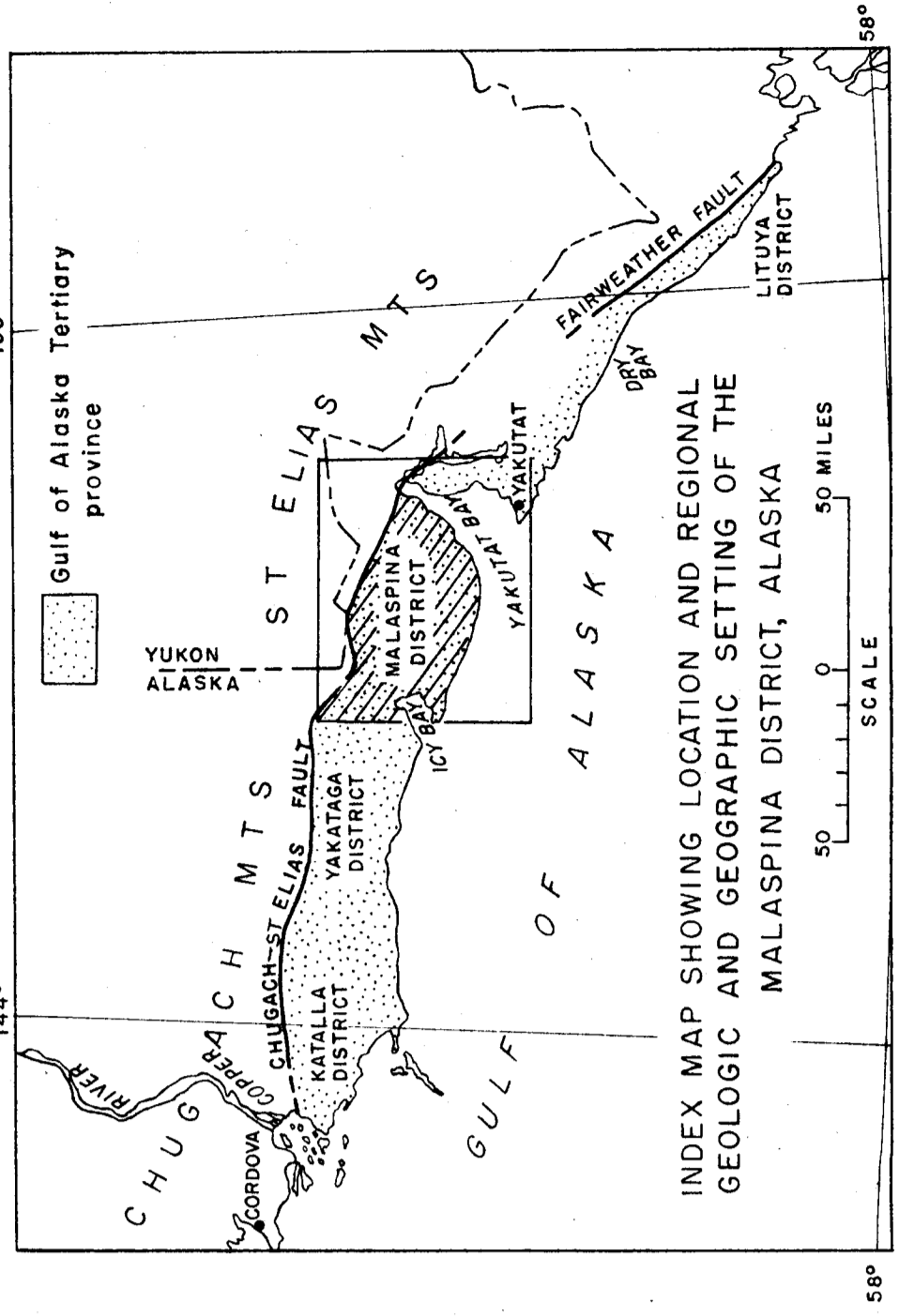
Geology from following sources: R. S. Tarr and B. S. Butler, U. S. Geol. Survey Professional Paper 64, 1909; Don J. Miller, U. S. Geol. Survey open file report, 1954; field mapping and photo interpretation George Plafker, Don J. Miller and G. L. Rossman, 1953-1954.

RECONNAISSANCE GEOLOGIC MAP OF THE MALASPINA DISTRICT, ALASKA

BY GEORGE PLAFKER AND DON J. MILLER

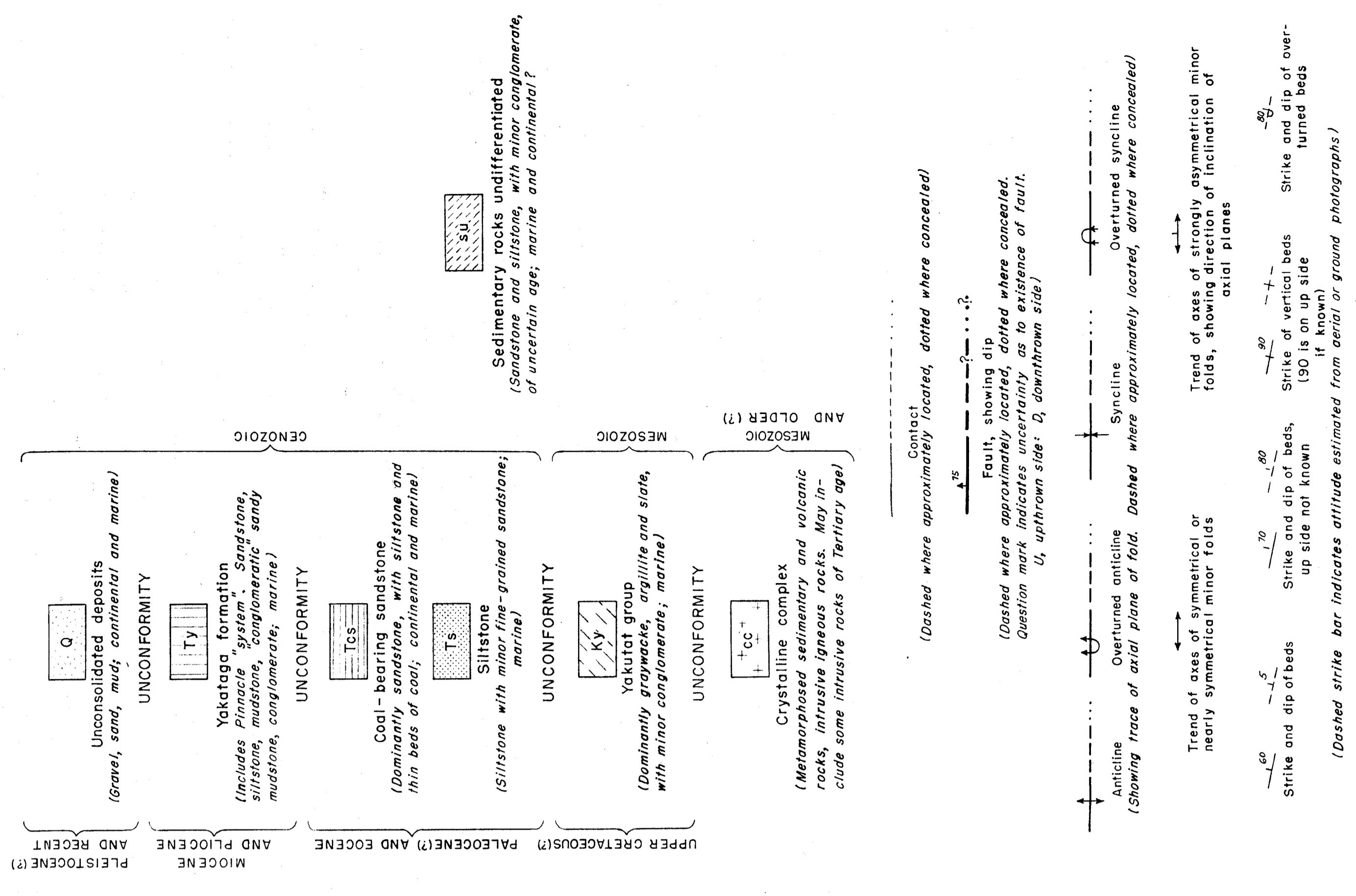
SCALE APPROXIMATELY 1:175,000

1954



INDEX MAP SHOWING LOCATION AND REGIONAL GEOLOGIC AND GEOGRAPHIC SETTING OF THE MALASPINA DISTRICT, ALASKA

EXPLANATION



Line of structure section
Oil seepage
Camp site of Geological Survey field party

Note: This map is preliminary and has not been edited or reviewed for conformity with U. S. Geological Survey standards and nomenclature.