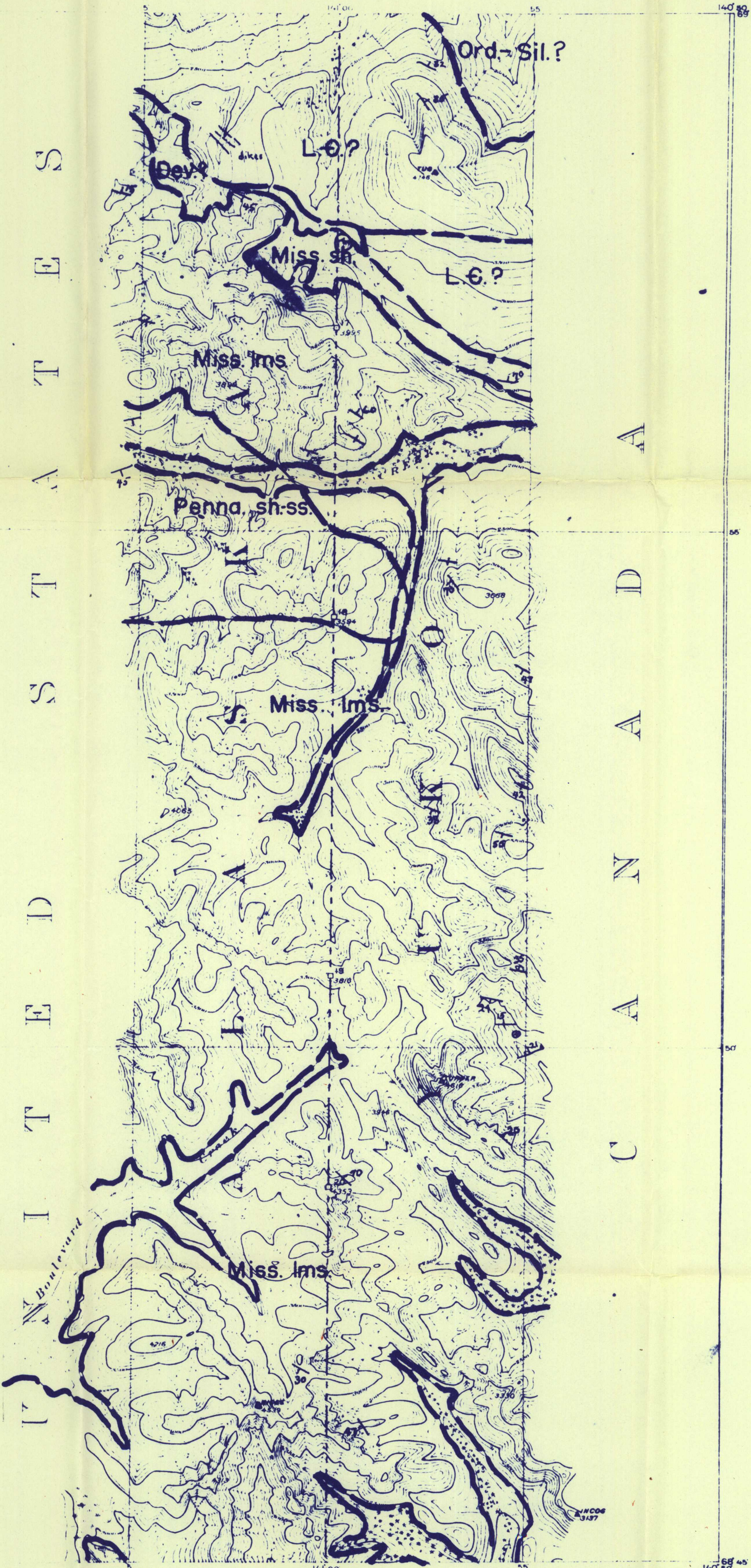
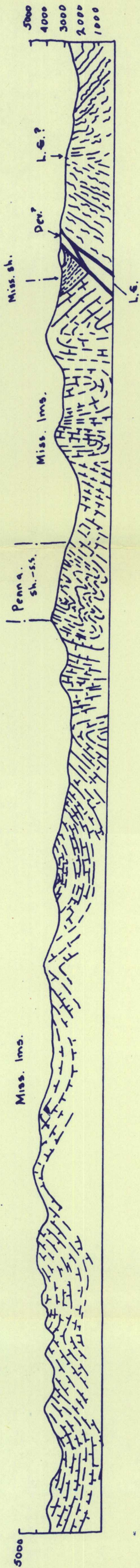


INTERNATIONAL BOUNDARY

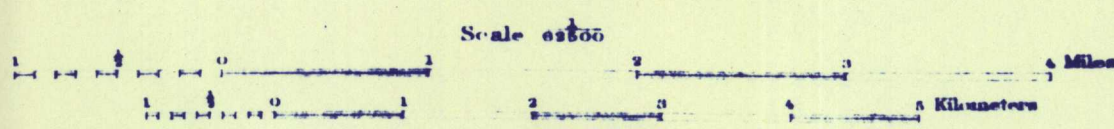
ALONG THE
141ST MERIDIAN
SHEET No. 4

SURVEYED UNDER THE DIRECTION OF
UNITED STATES COMMISSIONER O. H. TITTMANN HIS BRITANNIC MAJESTY'S COMMISSIONER W. F. KING



U
N
I
T
E
D
S
T
A
T
E
S

C
A
N
A
D
A



FOR THE UNITED STATES
THOMAS RIGGS, JR., ENGINEER IN CHARGE.
LINE PROJECTION BY WM. B. GILMORE.
TRIANGULATION BY A. C. BALDWIN.
TOPOGRAPHY BY W. C. GUERIN AND F. S. RYAN.
INSPECTION BY THOMAS RIGGS, JR.
SURVEYED IN 1911.

FOR HIS MAJESTY
J. D. CRAIG, D. L. S., SURVEYOR IN CHARGE.
LINE PROJECTION BY D. H. NELLES, D. L. S.
TRIANGULATION BY FREDERICK LANBART, D. L. S.
MONUMENTING BY FREDERICK LANBART, D. L. S. IN 1911-12.
INSPECTION BY J. D. CRAIG, D. L. S.

We certify that this map is a copy of Sheet No. 4 of the thirty-eight (38) maps, prepared and adopted by us under Article II of the Convention between Great Britain and the United States, signed at Washington April 21st, 1906, on which we marked the Boundary Line as established in accordance with said Convention.

O. H. Tittmann
United States Commissioner

W. F. King
His Britannic Majesty's Commissioner

The geology shown on this map has not been edited or reviewed for conformity with U. S. Geological Survey standards and nomenclature.