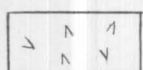


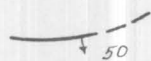
EXPLANATION



Granodiorite



Hydrothermally altered rock
 In part gold bearing.



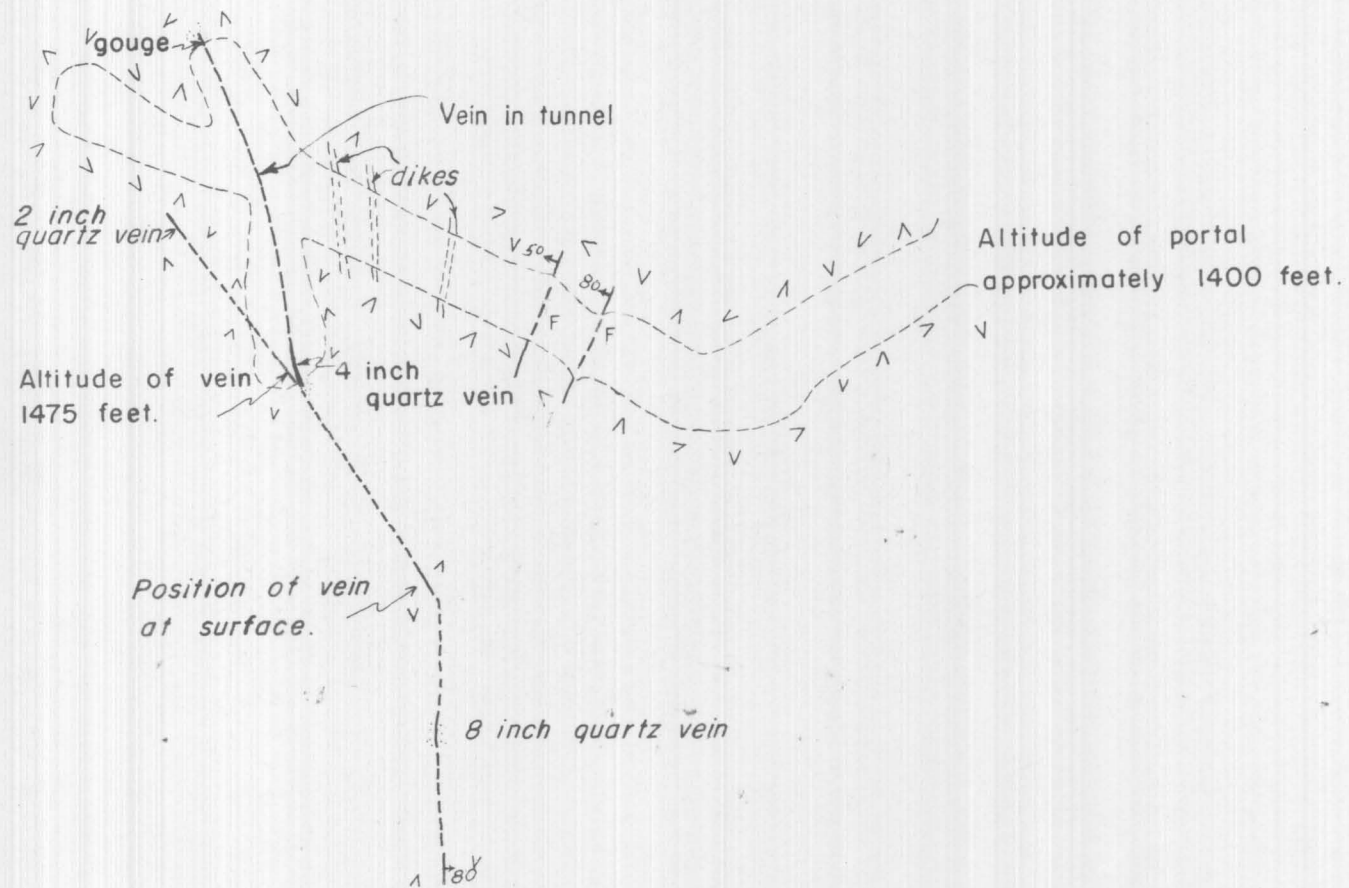
Fault, showing dip
 Dashed where inferred



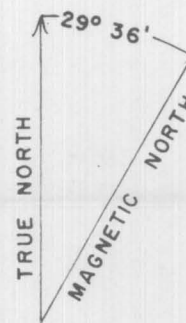
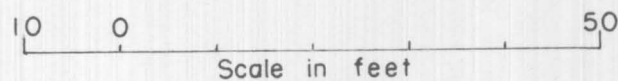
Vein showing dip
 Dashed where inferred



Underground workings



VEINS AND WORKINGS AT THE
 MONARCH NO. 2 PROPERTY



Approximate mean declination
 1954

Tape and Brunton compass survey
 By D.L. Rossman 1954