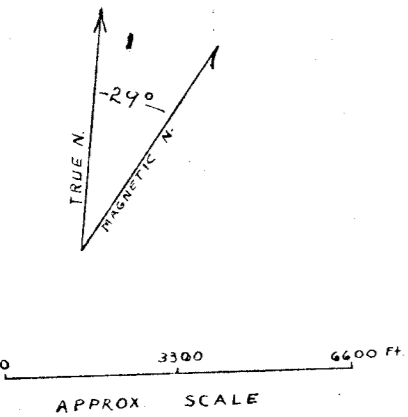
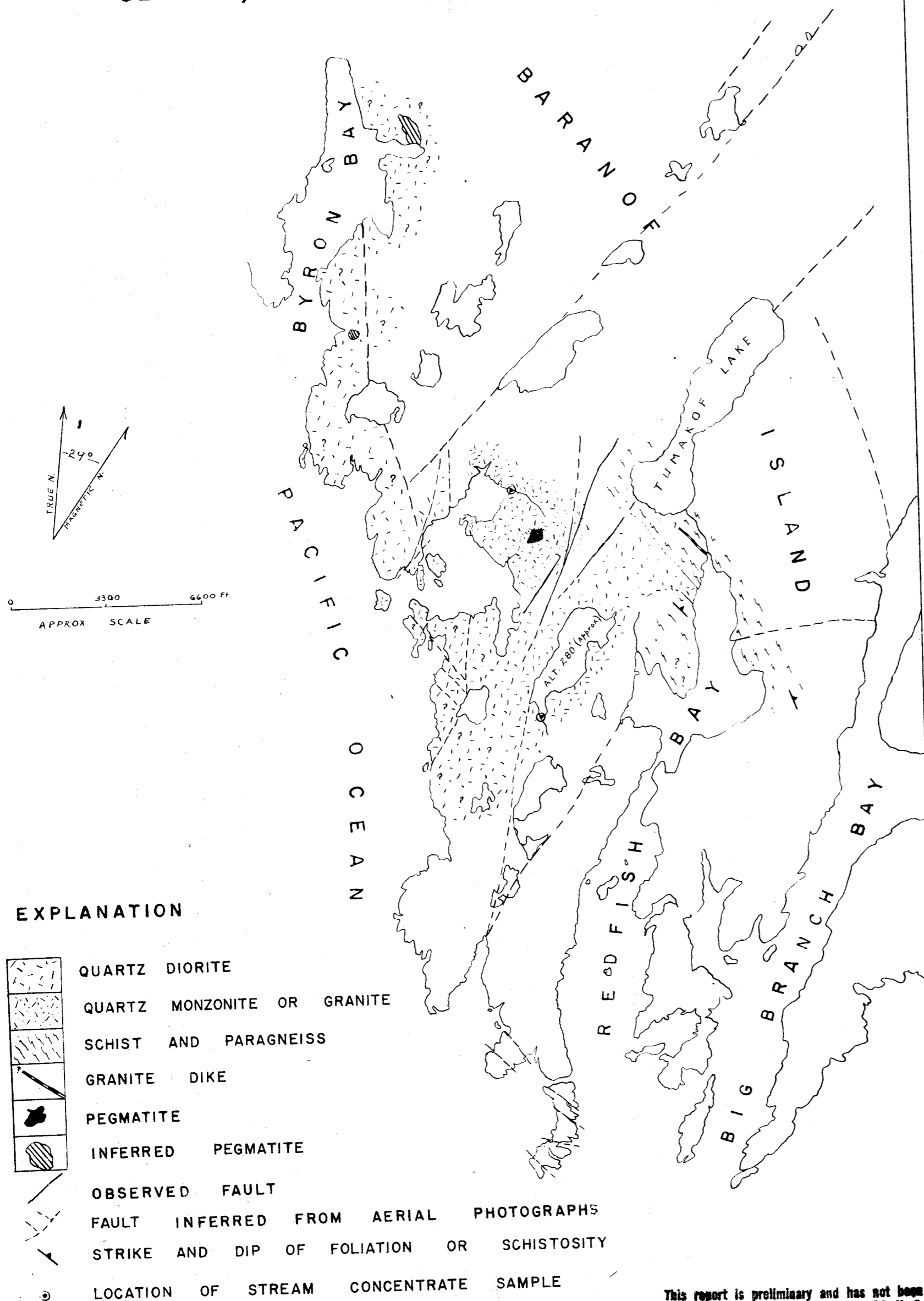


GEOLOGIC SKETCH MAP OF AREA NEAR PEGMATITE
DEPOSITS, BARANOF ISLAND, ALASKA



EXPLANATION

- QUARTZ DIORITE
- QUARTZ MONZONITE OR GRANITE
- SCHIST AND PARAGNEISS
- GRANITE DIKE
- PEGMATITE
- INFERRED PEGMATITE
- OBSERVED FAULT
- FAULT INFERRED FROM AERIAL PHOTOGRAPHS
- STRIKE AND DIP OF FOLIATION OR SCHISTOSITY
- LOCATION OF STREAM CONCENTRATE SAMPLE

This report is preliminary and has not been
edited or reviewed for conformity with U. S.
Geological Survey standards and nomenclature.