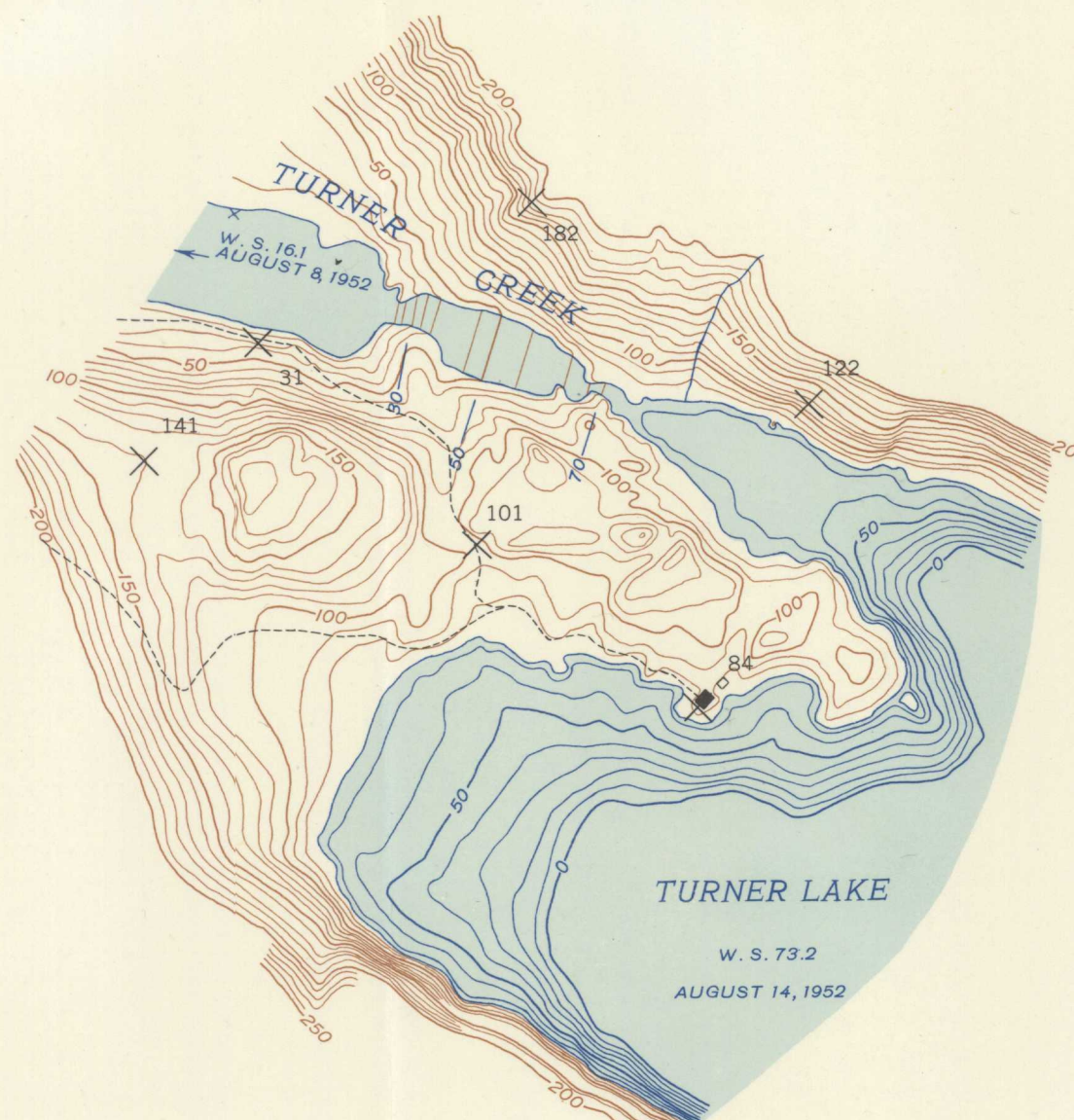




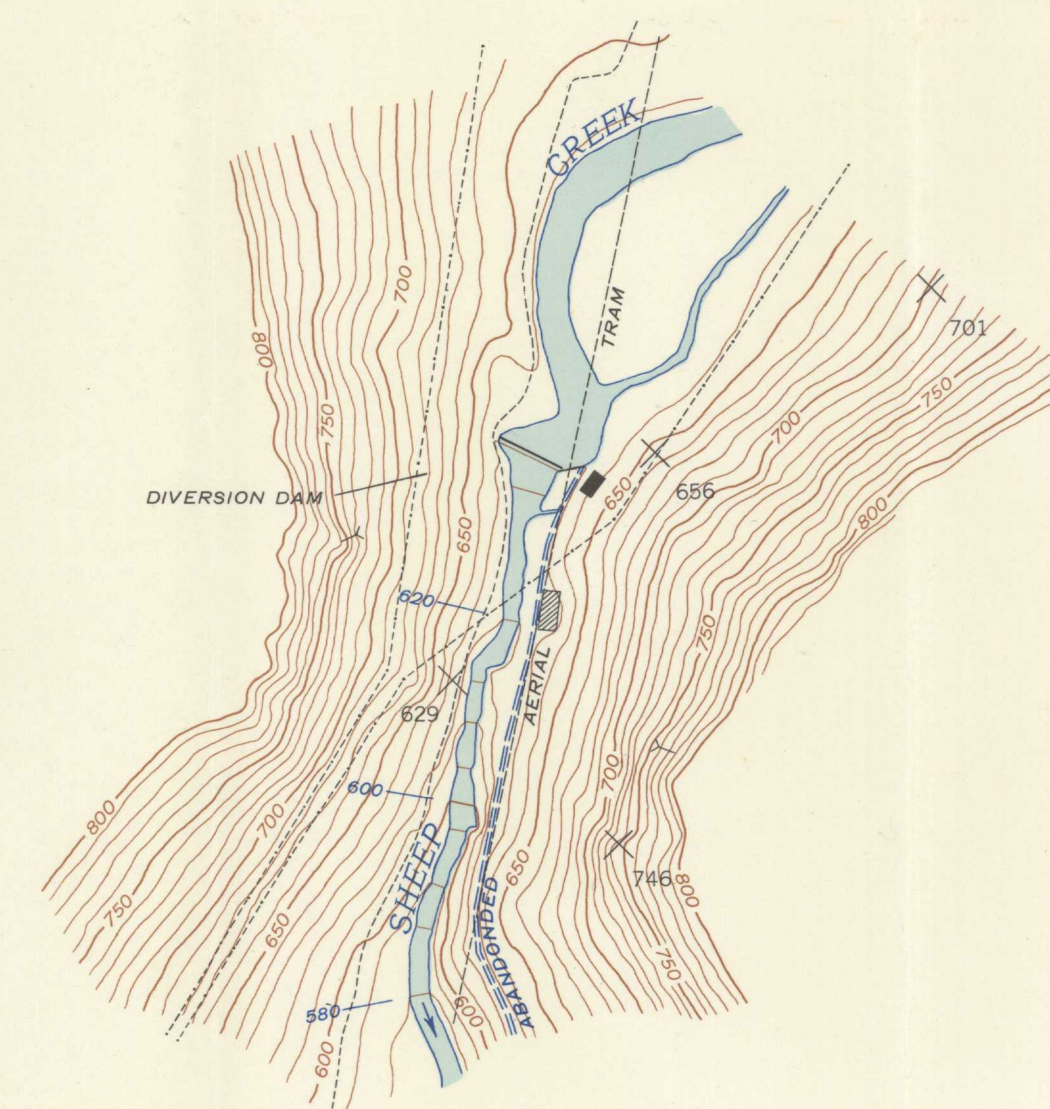
CARLSON CREEK DAM SITE
(MILE 1.8)

Scale 1:2400 or 1 inch=200 feet
200 100 0 200 400 600 Feet
Contour interval on land 10 feet
Contour interval on water surface 5 feet
Datum is mean sea level



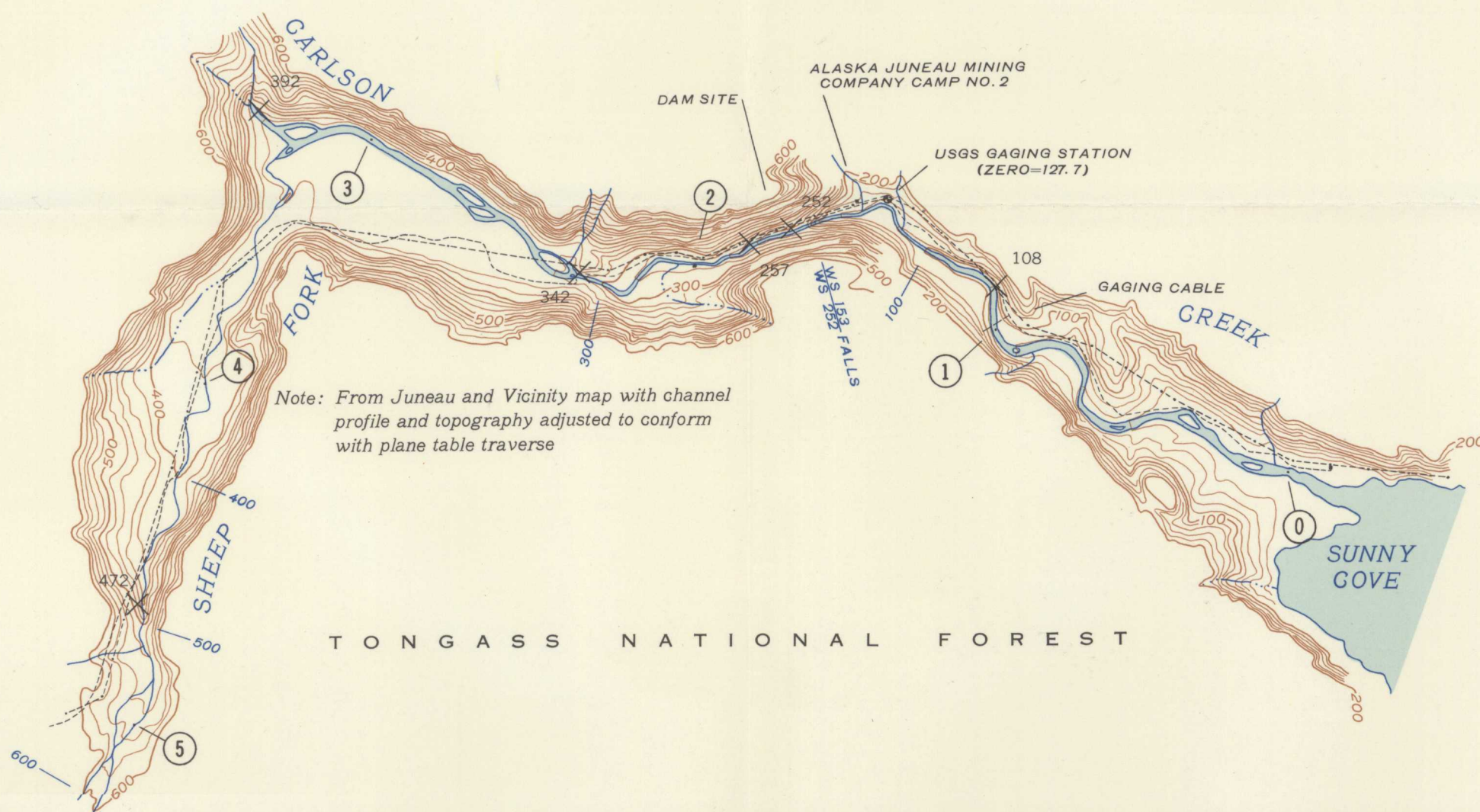
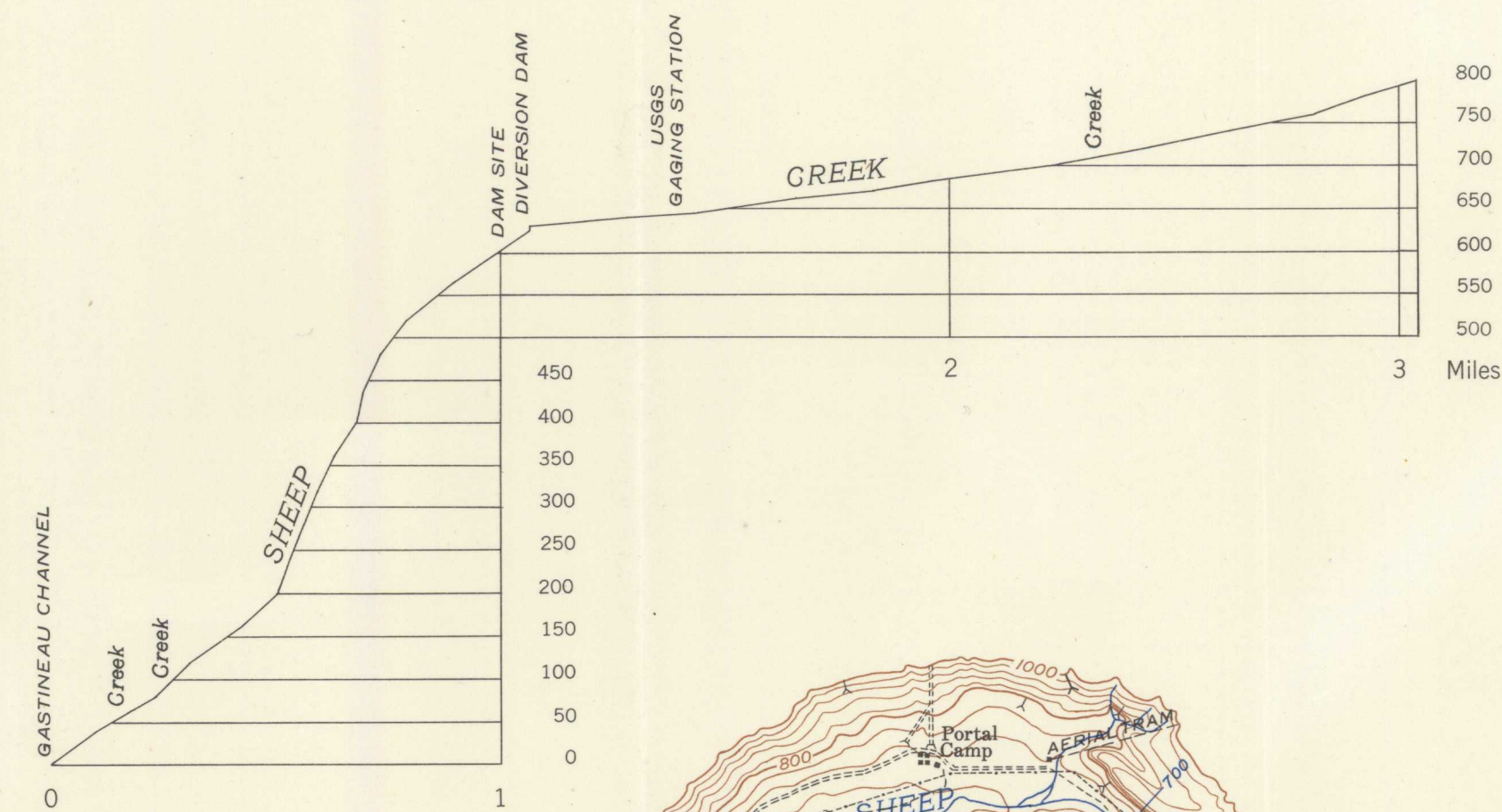
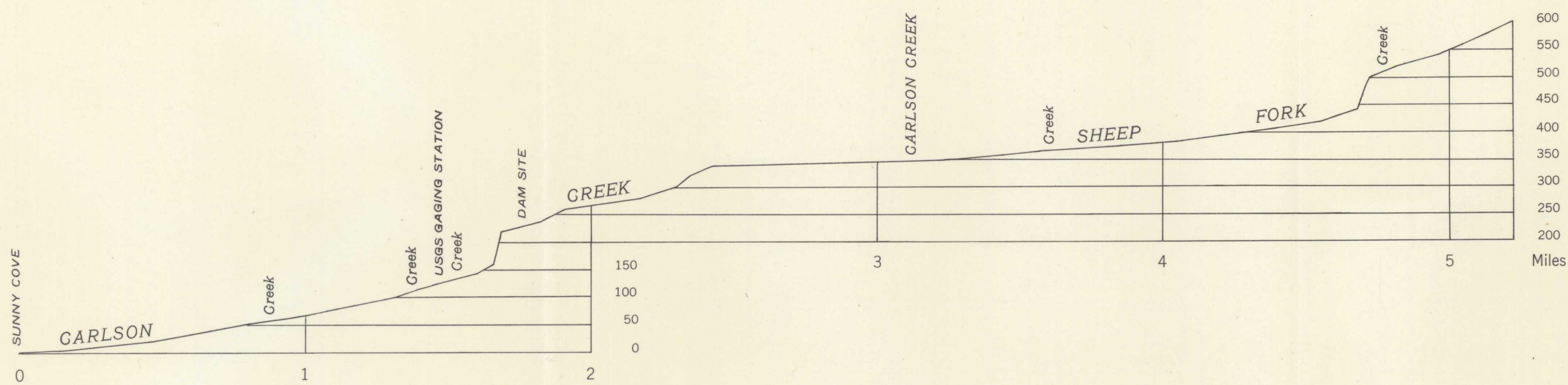
TURNER LAKE DAM SITE

Scale 1:4800 or 1 inch=400 feet
400 200 0 400 800 1200 Feet
Contour interval on land 10 feet
Contour interval on water surface 5 feet
Datum is mean sea level

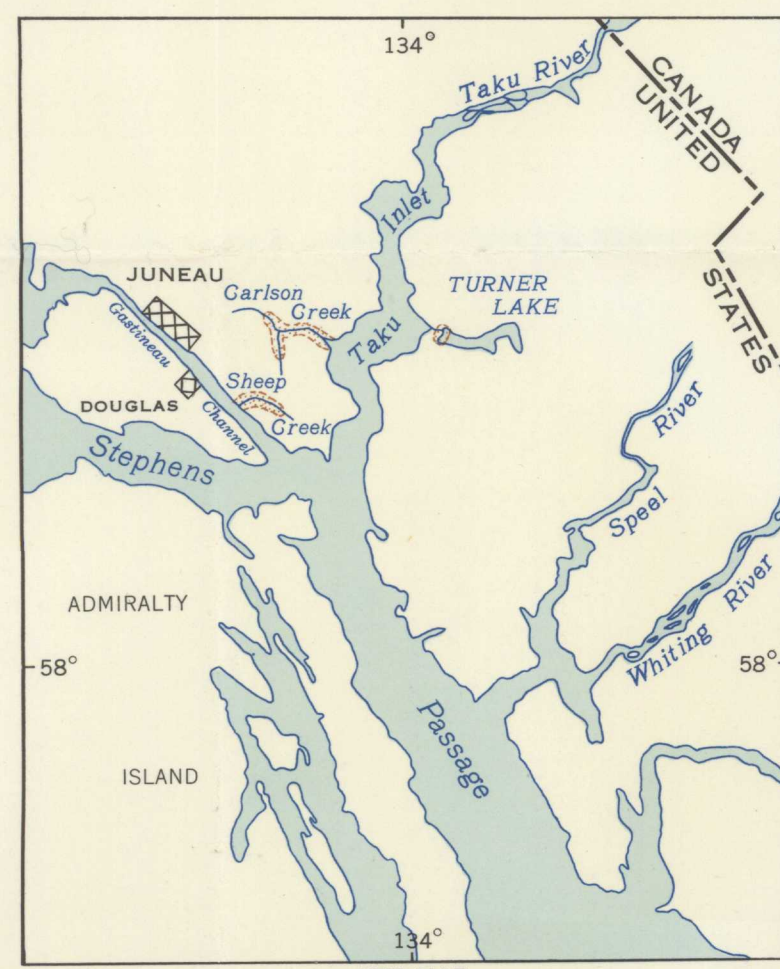


SHEEP CREEK DAM SITE
(MILE 1.0)

Scale 1:2400 or 1 inch=200 feet
200 100 0 200 400 600 Feet
Contour interval on land 10 feet
Contour interval on water surface 5 feet
Datum is mean sea level



TONGASS NATIONAL FOREST



KEY MAP



TONGASS

NATIONAL FOREST

Topography by Gordon C. Giles
Surveyed in 1952

30 1/2°
TRUE NORTH
MAGNETIC NORTH
APPROXIMATE MEAN
DECLINATION 1962

Scale 1:24000 or 1 inch=2000 feet
1 0 1 2 Miles
5000 0 5000 10000 Feet
Vertical scale 1 inch=200 feet
Contour interval 20 feet and 40 feet
Datum is mean sea level

Subject to adjustment
All crosses (X) are plane table bench marks

One plan sheet with profiles and dam sites

SHEEP CREEK AND
CARLSON CREEK, ALASKA
Printed in 1953

ONE SHEET