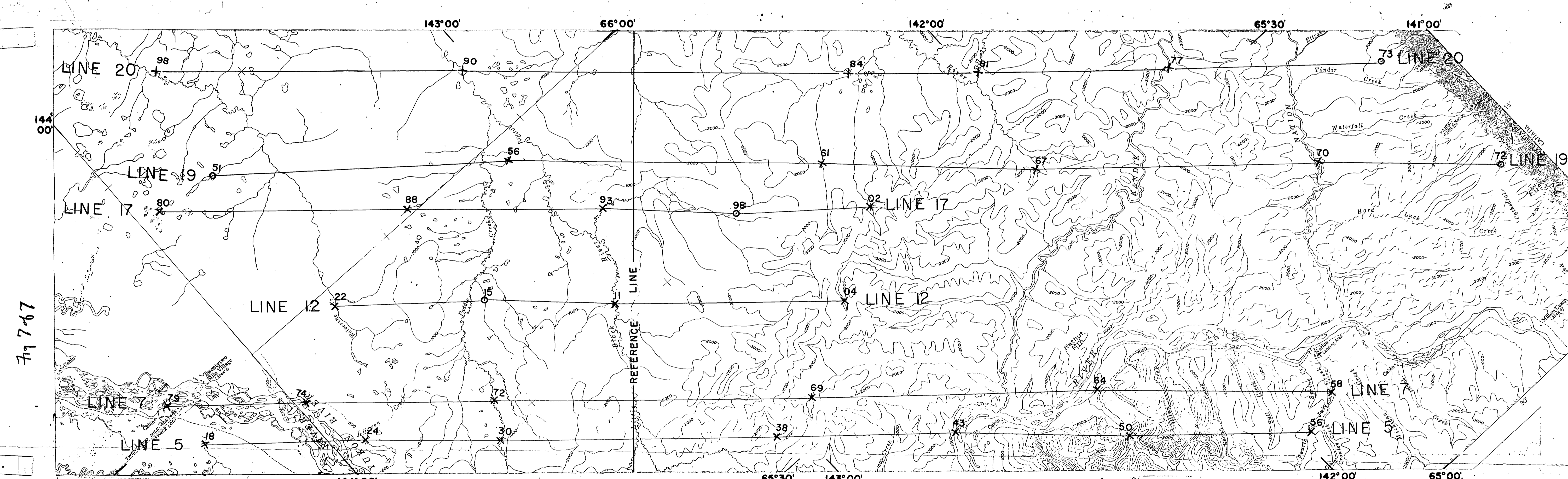


NUMBERS INDICATE IDENTIFICATION POINTS ON MAP BELOW

PROFILES NOT ADJUSTED TO COMMON DATUM



BASE MAP BY TOPOGRAPHIC DIVISION  
U. S. GEOLOGICAL SURVEY

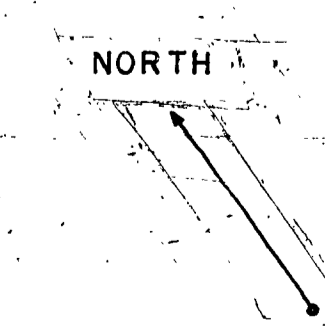
SURVEY BY G. E. ANDREASEN, LINES 5, 7, 12, AND 17 FLOWN AT A BAROMETRIC ELEVATION OF 4500 FEET, 1955. LINES 19 AND 20 FLOWN AT A BAROMETRIC ELEVATION OF 4000 FEET, 1958

# TOTAL INTENSITY AEROMAGNETIC PROFILES OF THE YUKON FLATS-KANDIK AREA, ALASKA

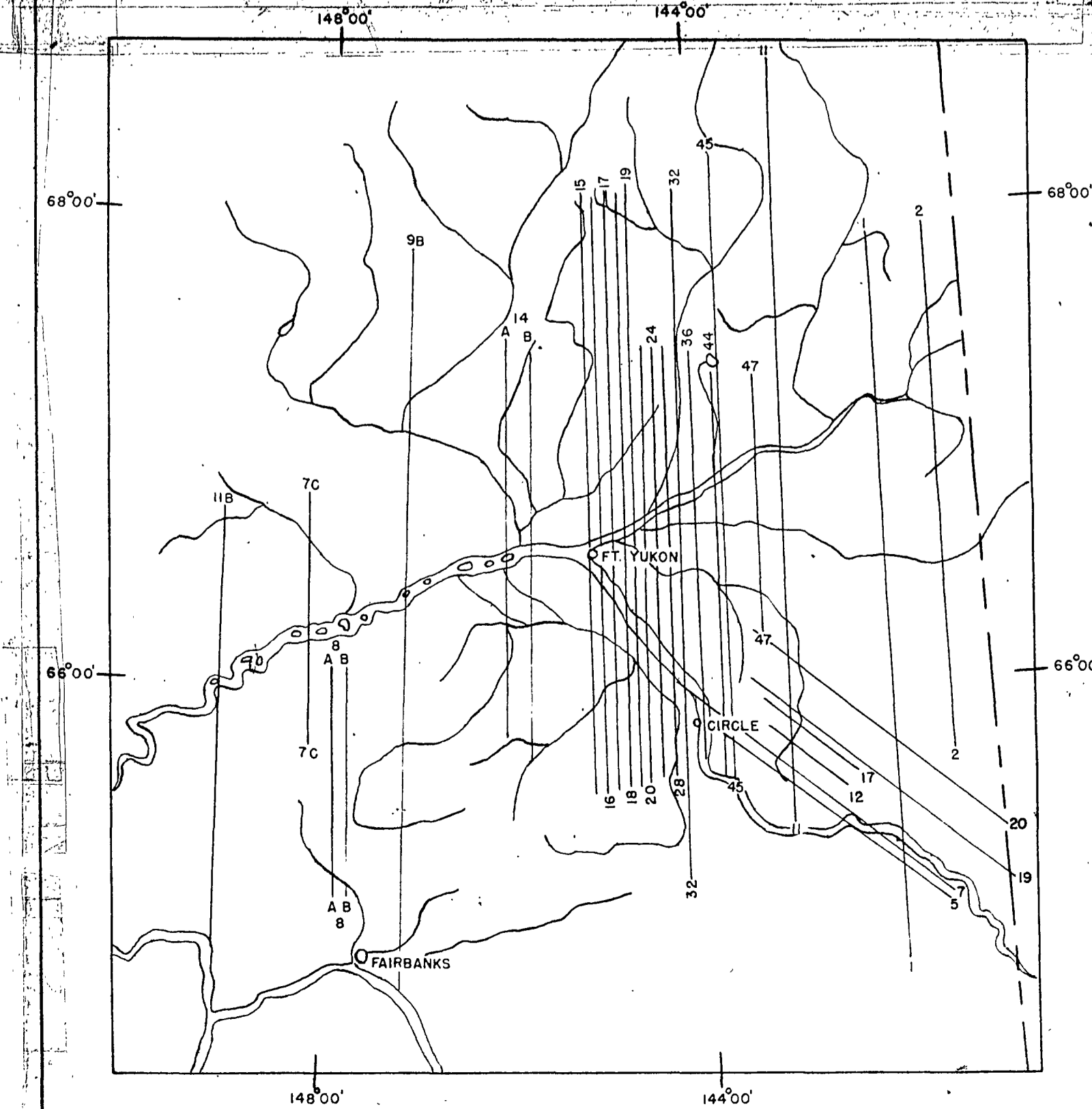
FIGURE 7 OF 7  
FLIGHTS 5, 7, 12, 17, 19, AND 20

SCALE 1:250 000

1960



This map is preliminary and has not been edited or revised for conformity to Geological Survey standards and nomenclature.



INDEX MAP SHOWING FLIGHT TRAVERSES PROPERTY OF DGG JIRDAE