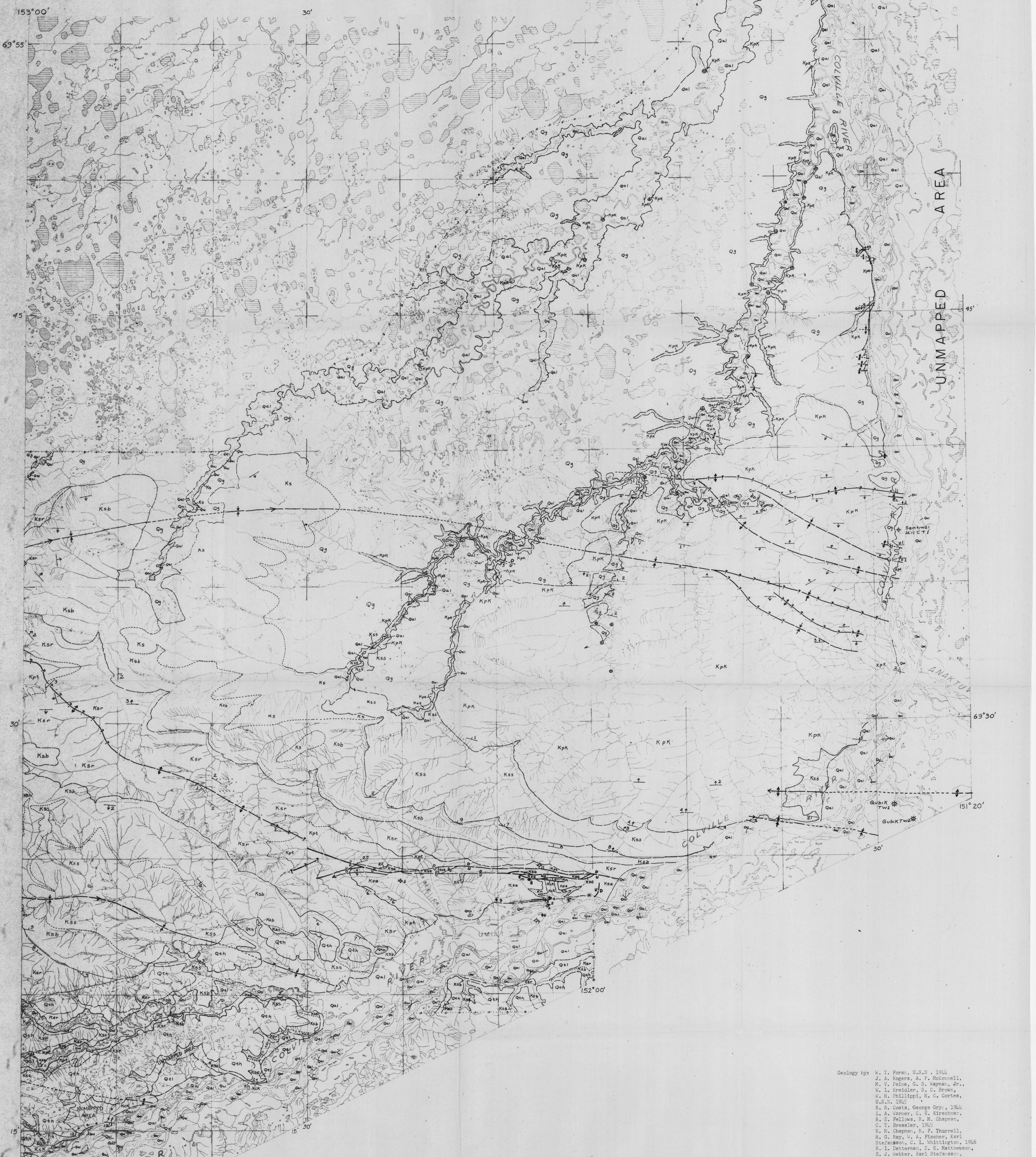


PROPERTY OF DGCS LIBRARY

152°00'

151°20'

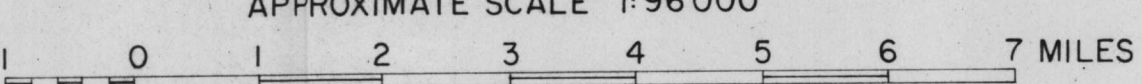
DEPARTMENT OF THE INTERIOR UNITED STATES GEOLOGICAL SURVEY



PRELIMINARY GEOLOGIC MAP OF THE UMIAT-MAYBE CREEK REGION, ALASKA

By W.P. Brosgé and C.L. Whittington

APPROXIMATE SCALE 1:96 000



1950 MAGNETIC DECLINATION AT SOUTH EDGE OF SHEET RANGES FROM 27°30' TO 28°45' East

1962

Base map compiled by U.S. Geological Survey 1946-1949. This map is preliminary and has not been edited or reviewed for conformity with U.S. Geological Survey standards.

OPEN FILE MAP

Geology by: W. T. Foran, U.S.N. 1946; J. A. Rogers, A. P. McConnell, M. V. Feine, G. S. Mayman, Jr., W. L. Resdler, S. C. Brown, W. H. Phillips, H. C. Coates, U.S.N. 1945; R. H. Coates, George Orr, 1944; L. A. Warner, C. E. Kirschner, R. S. Fellows, R. N. Chapman, C. T. Bressler, 1943; R. H. Chapman, H. F. Thurrell, R. G. Say, W. A. Fischer, Karl Stefansson, C. L. Whittington, 1946; R. L. Dettman, I. E. Matthews, R. J. Webber, Karl Stefansson, R. F. Thurrell, C. L. Whittington, M. L. Fryer, R. A. Soren, 1947; W. R. Bragg, A. N. Kover, 1949; G. E. Horlein, R. M. Chapman, C. L. Reynolds, 1951; C. L. Whittington, 1951; R. L. Dettman, R. S. Bickel 1953. Geology of wells by F. R. Collins, F. M. Robinson, 1958, 1959. Quaternary geology and cretaceous geology of many interstream areas largely from interpretation of aerial photographs.