


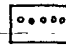


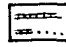



EXPLANATION

-  Covered
-  Sandy mudstone
-  Conglomeratic sandy mudstone
-  Conglomerate
-  Sandstone
-  Siltstone
-  Calcareous sandstone and thin beds of limestone
-  Breccia

For locations of stratigraphic sections see Fig.

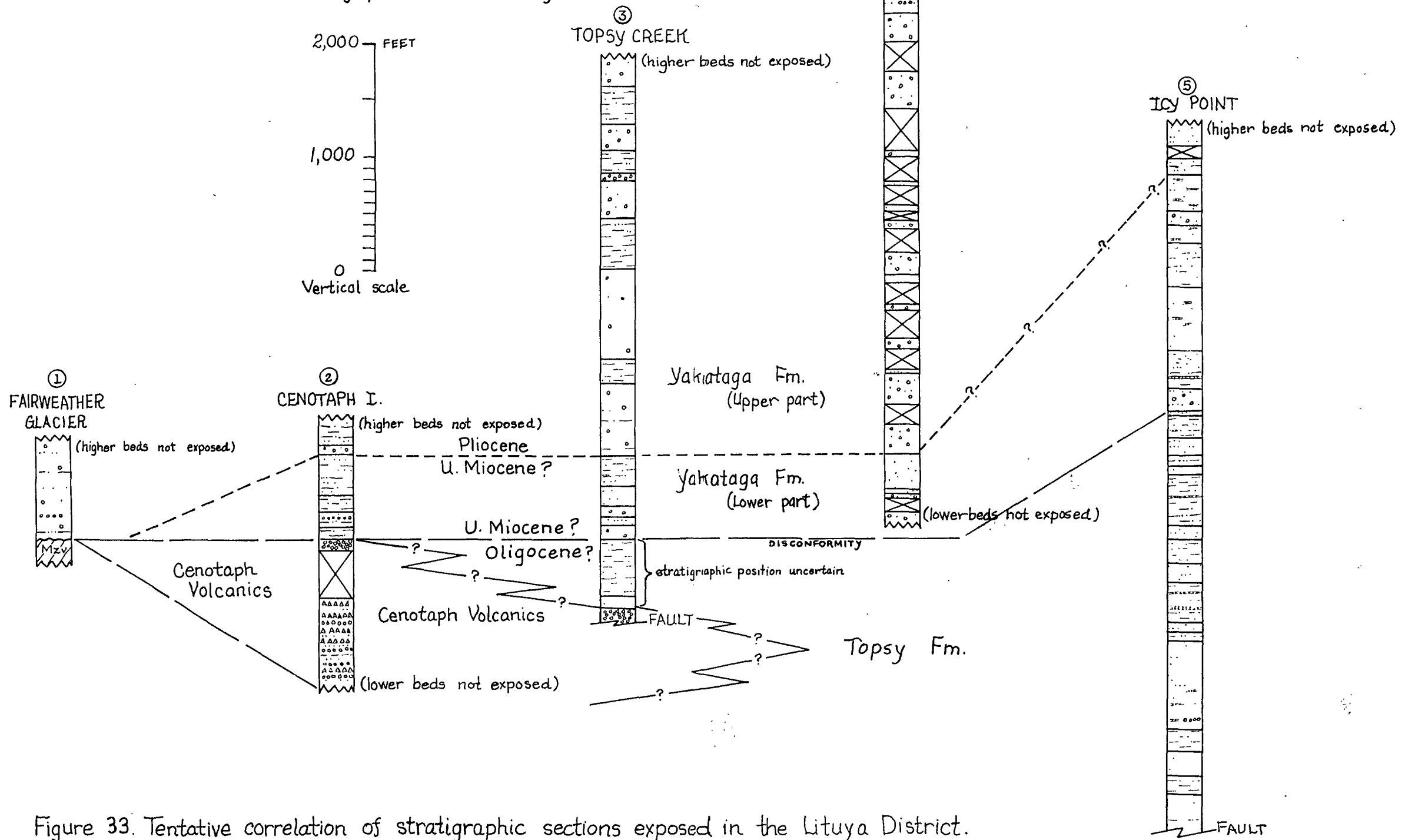


Figure 33. Tentative correlation of stratigraphic sections exposed in the Lituya District.