

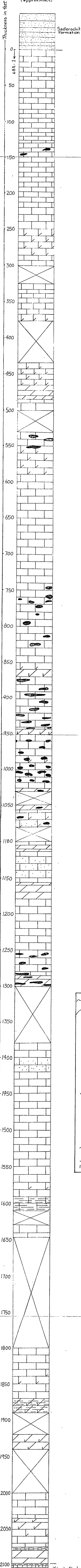
AVAILABILITY OF PETROGRAPHIC THIN-SECTIONS OF THE LISBURNE GROUP FROM NORTHEASTERN BROOKS RANGE, ALASKA, by Augustus K. Armstrong

One set of petrographic thin-sections have been prepared at about 10-foot intervals for three Lisburne Group sequences in the Northeastern Brooks Range illustrated below. These thin-sections are available for study. To check availability contact George Gryc, Chief, Alaskan Geology Branch, U.S. Geological Survey, 345 Middlefield Road, Menlo Park, California, 94025.

IKIAKPUK SECTION

SECTION 68A-1

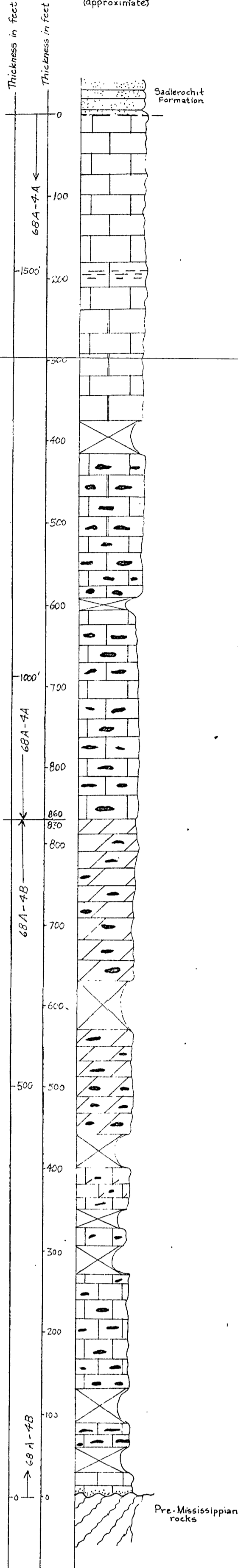
Franklin Mts., Alaska
Lat. 69°20' Long. 145°30'
(approximate)



SUNSET PASS

SECTION 68A-4A,4B

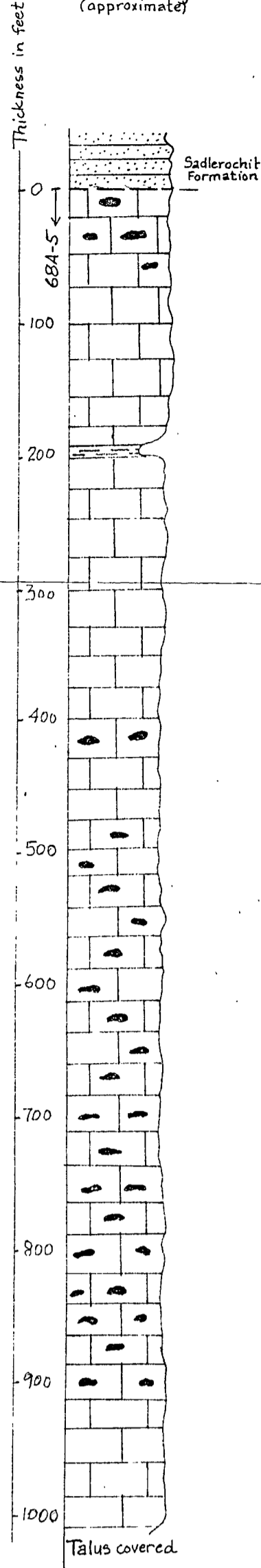
Sadlerochit Mts., Alaska
Lat. 69°37' Long. 144°35'
(approximate)



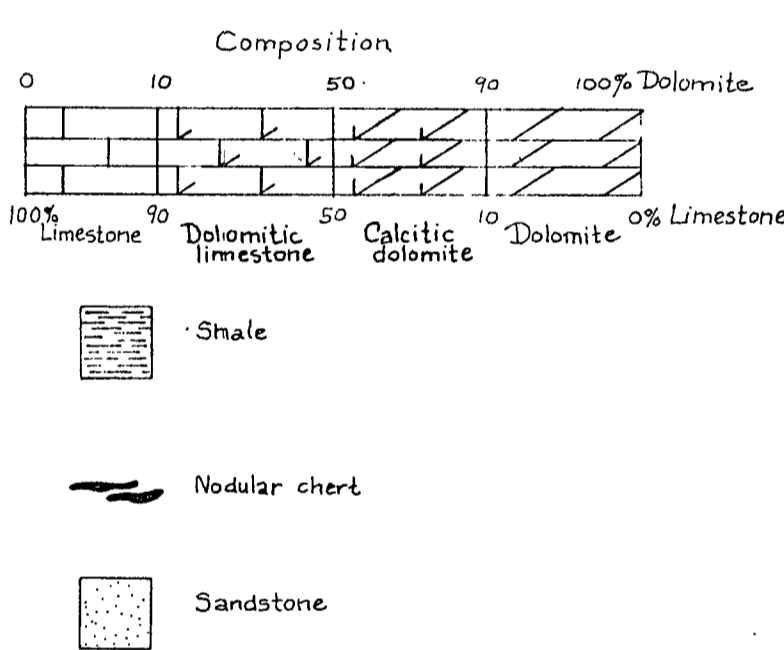
EGAKSRAK RIVER

SECTION 68A-5

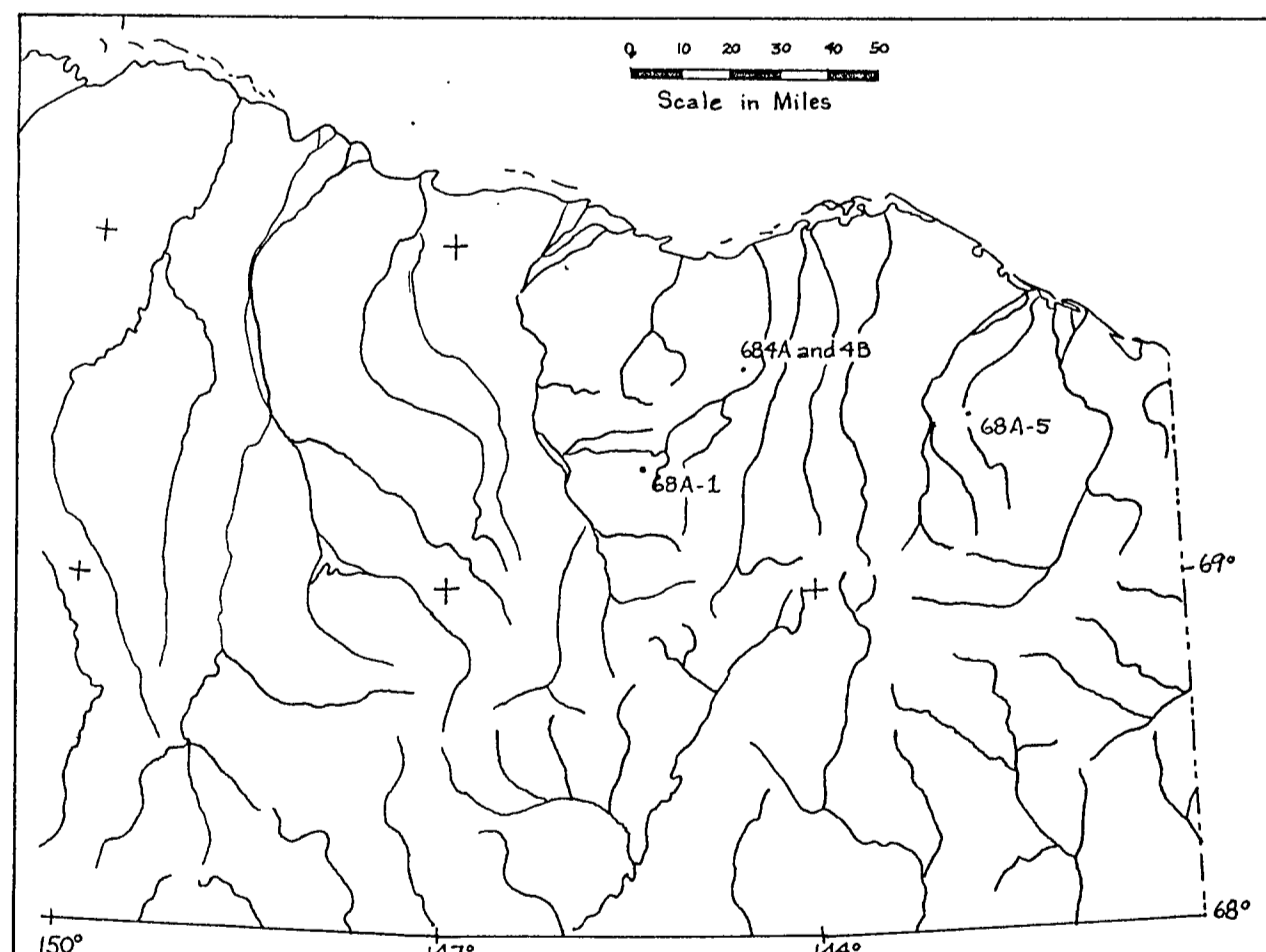
Romanzof Mts., Alaska
Lat. 69°32' Long. 142°40'
(approximate)



Glossary of Lithologic Symbols



This report is preliminary and has not been edited or reviewed for conformity with U.S. Geological Survey standards and nomenclature.



Index map of northeastern Alaska showing locations of sections.