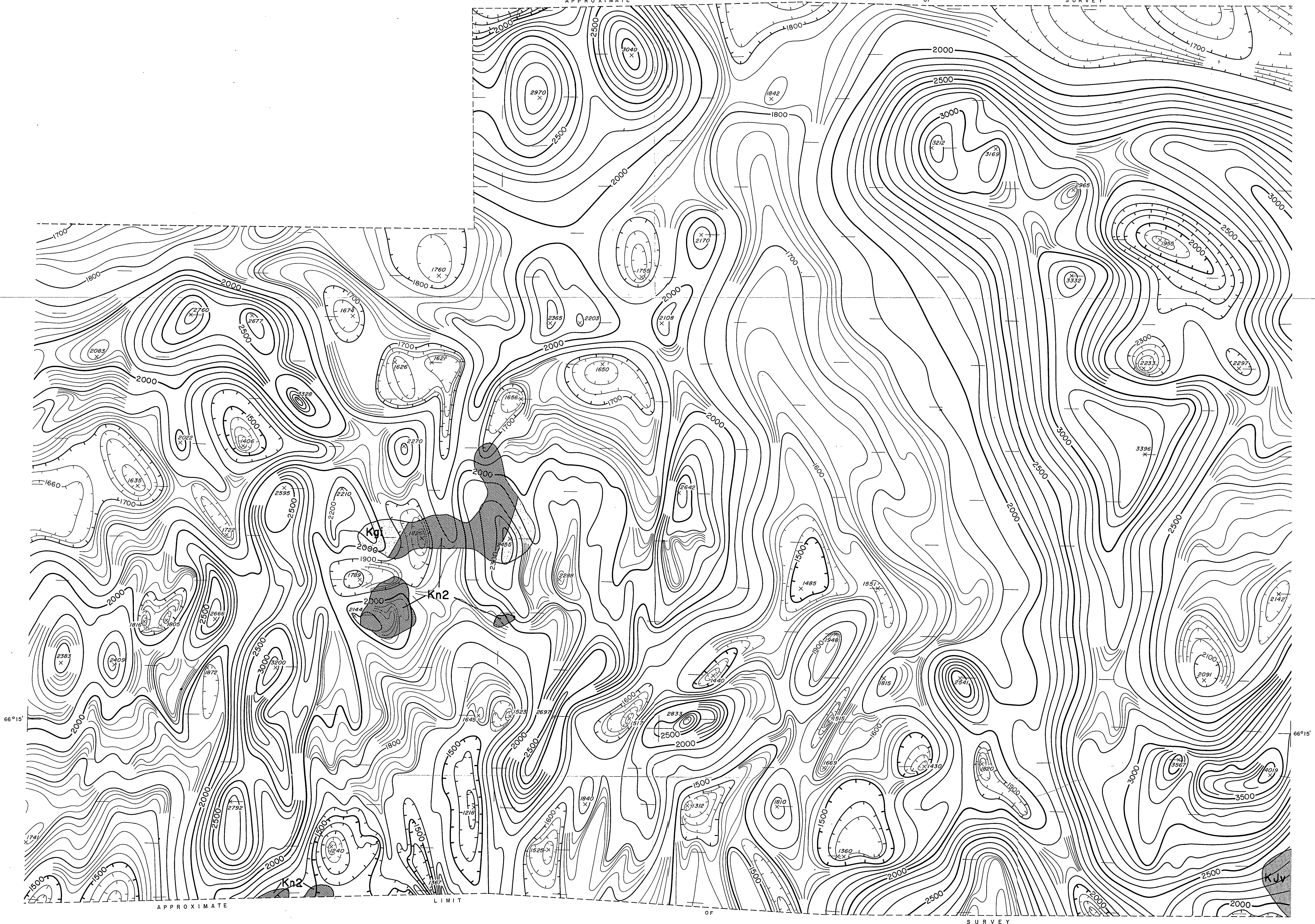


160°00'
66°30'

159°30'

159°00'
66°30'

APPROXIMATE LIMIT OF SURVEY



Geology mapped at 1:250,000 scale and enlarged to 1:63,360 scale. (Patton and Miller, 1968).

U. S. Geological Survey
OPEN FILE REPORT
This report is preliminary and has not been edited or reviewed for conformity with Geological Survey standards and nomenclature.

PROPERTY OF DOCS LIBRARY

66°00'
160°00'

159°30'

66°00'
159°00'

HORIZONTAL SCALE ----- 1:63,360

CONTOUR INTERVAL ----- 20 GAMMA

20 GAMMA CONTOUR -----

100 GAMMA CONTOUR -----

500 GAMMA CONTOUR -----

MAGNETIC LOW -----

MAGNETIC MAXIMUM / MINIMUM ----- x 2497

SURVEY ALTITUDE ----- 400' AMT

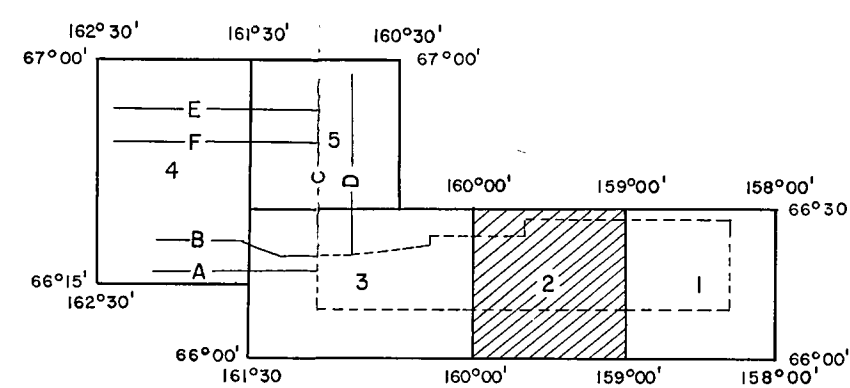
FLIGHT LINE -----

MAGNETICS BASED ON ARBITRARY DATUM

REGIONAL MAGNETIC GRADIENT NOT REMOVED

ESTIMATED TOTAL INTENSITY OF FIELD: 55,500 GAMMA

MEAN INCLINATION: +77°



Mag. contours

HOGATZA TREND ALASKA
FIGURE 3, SHEET NUMBER 2

LKB 1968

REC'D. COLLEGE
JUL 2 1969
DIV. MINES & GEOLOGY

OF372