

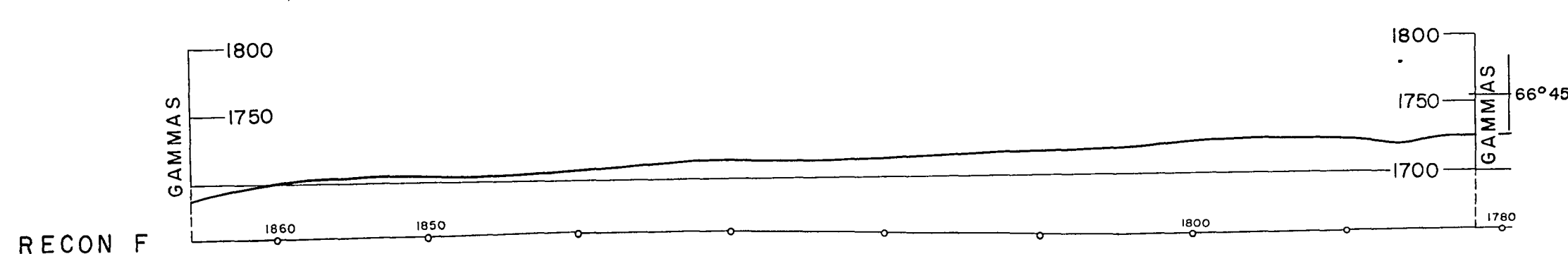
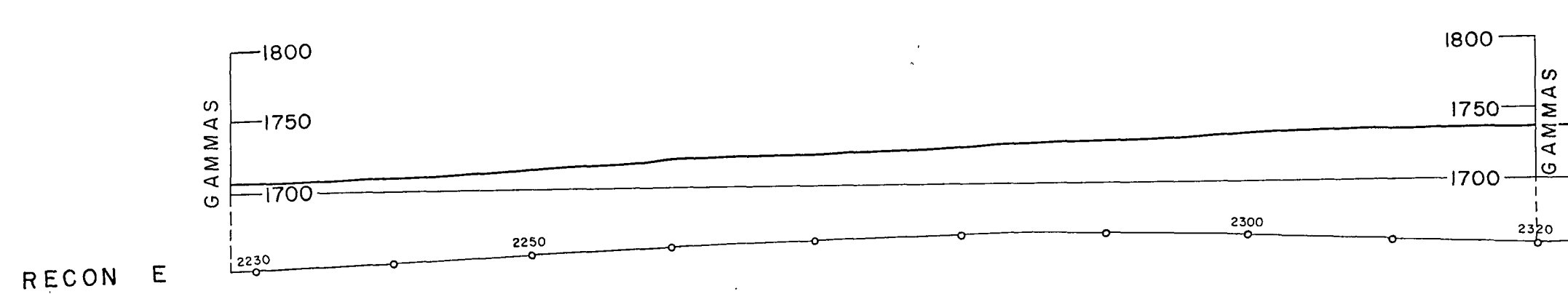
162°30'
67°00'

162°00'

161°30'
67°00'

66°45'

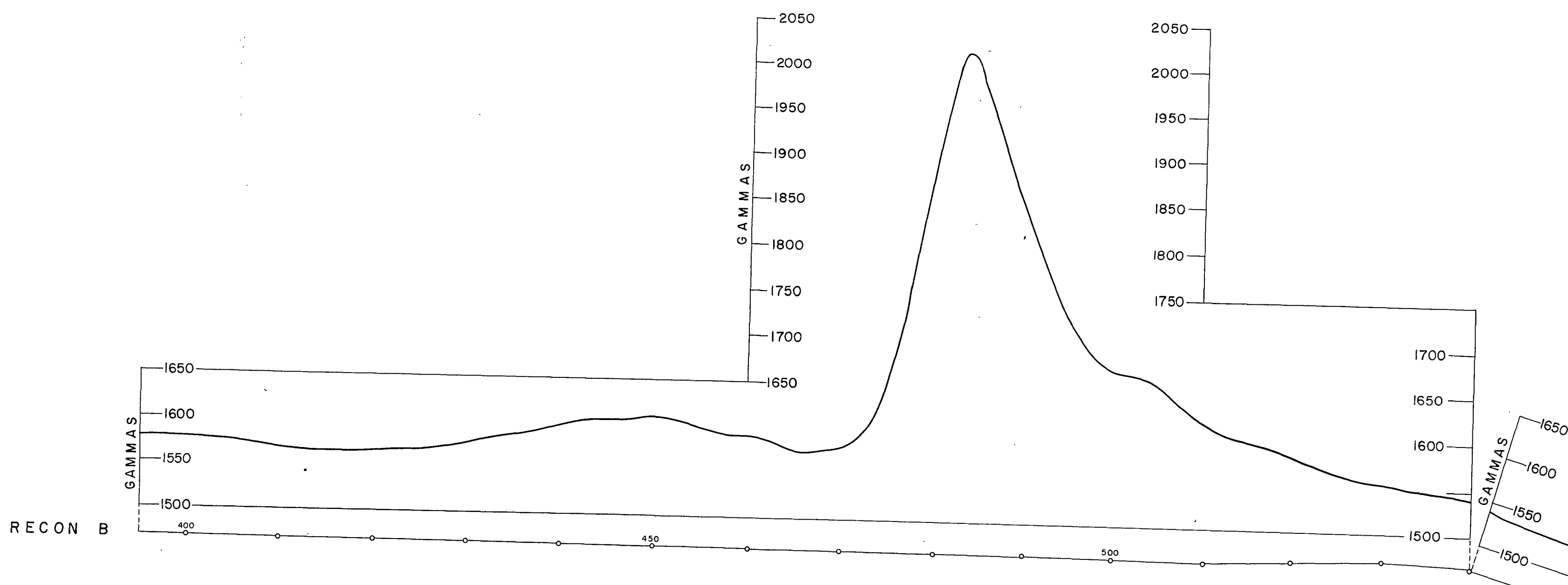
+



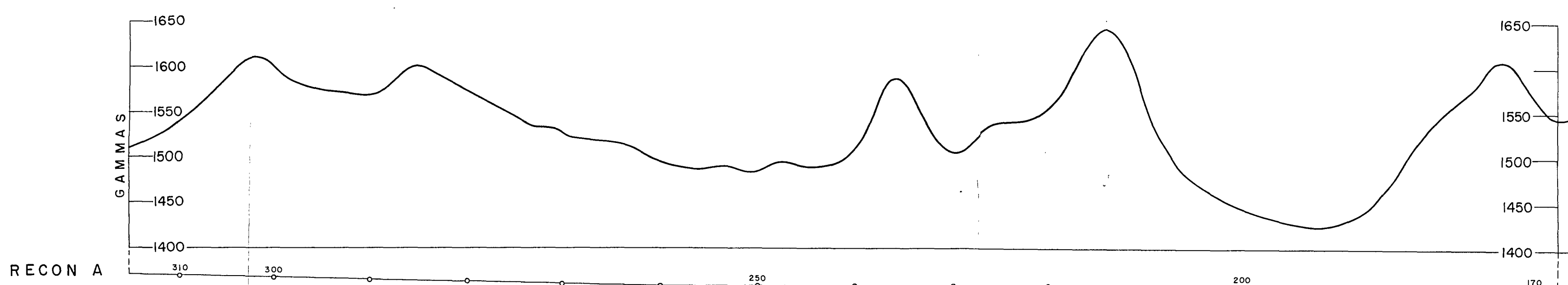
66°30'

+

66°30'



PROPERTY OF DODS LIBRARY

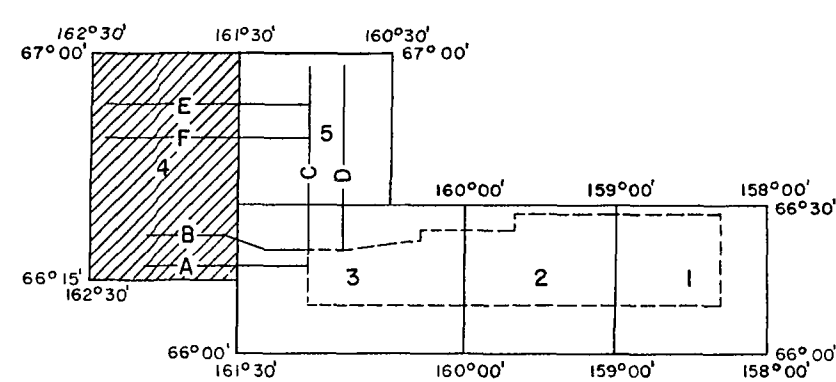


66°15'
162°30'

162°00'

66°15'
161°30'

HORIZONTAL SCALE ----- 1" = 63,360'
 VERTICAL SCALE ON RECONNAISSANCE PROFILES AS SHOWN
 RECONNAISSANCE ALTITUDE ----- 500' AMT
 FLIGHT LINE ----- RECON-A
 MAGNETICS BASED ON ARBITRARY DATUM
 REGIONAL MAGNETIC GRADIENT NOT REMOVED
 ESTIMATED TOTAL INTENSITY OF FIELD: 50,500 GAMMAS
 MEAN INCLINATION: +77°



Mag. Profiles

HOGATZA TREND ALASKA
FIGURE 3, SHEET NUMBER 4

LKB 1968

U. S. Geological Survey
 This version is preliminary and has
 not been edited or reviewed for
 conformity with Geological Survey
 standards and nomenclature.

ADGGS
 RECD. COLLEGE
 JUL 2 1969

OF 372