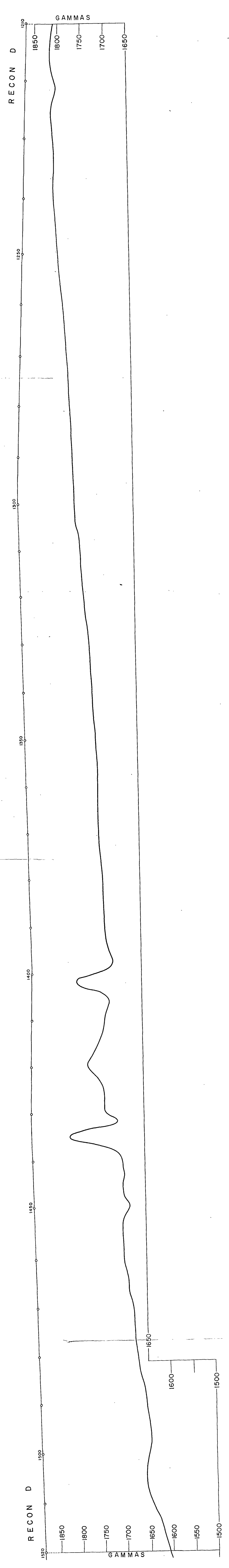
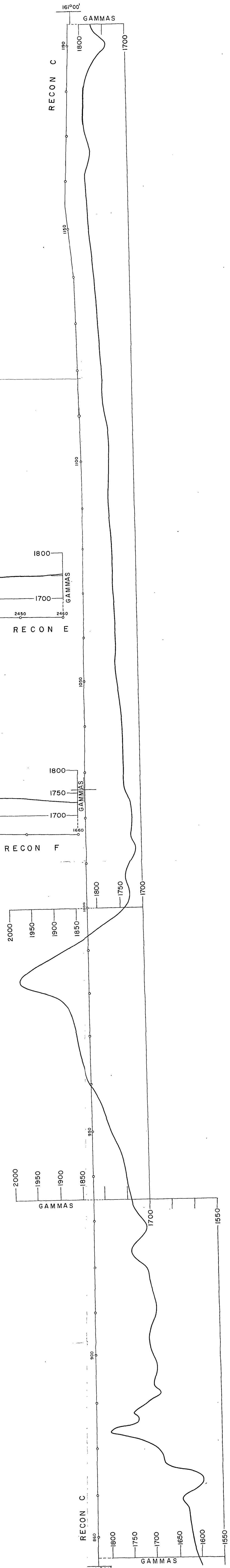
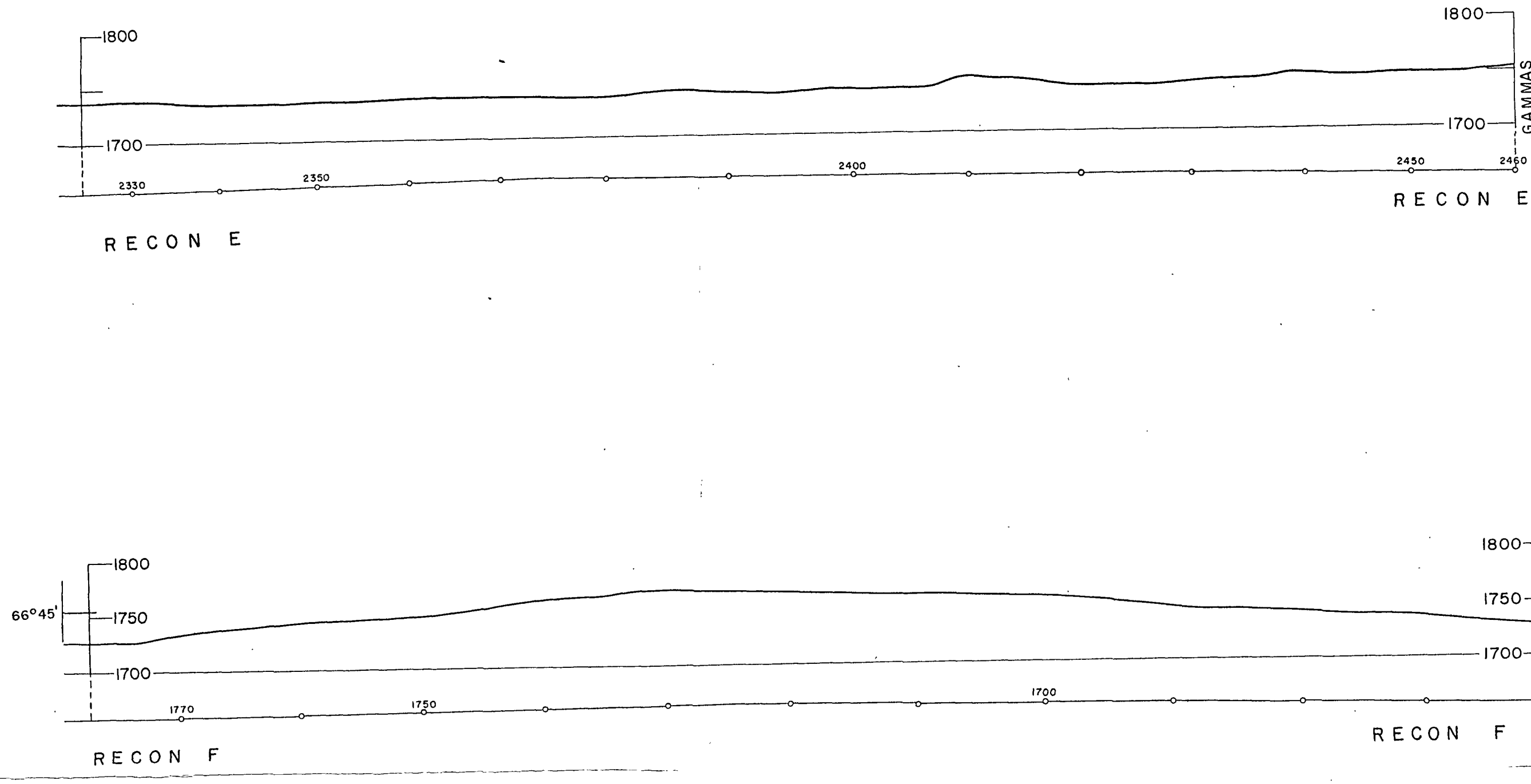


161°30'  
67°00'

160°30'  
67°00'

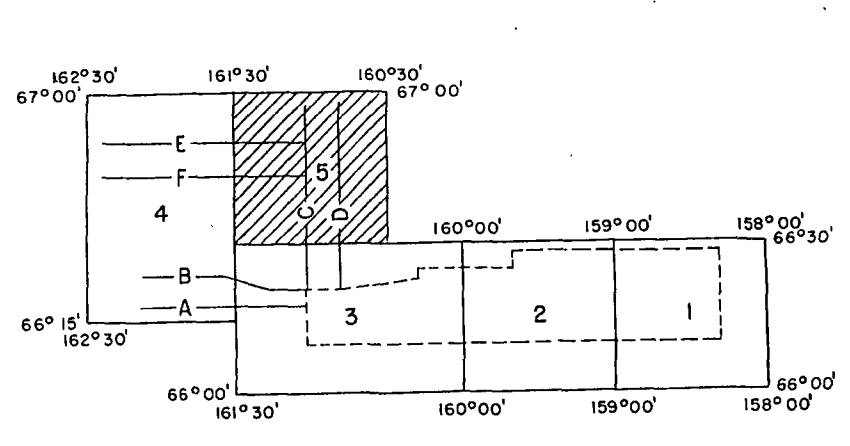


66°30'  
161°30'

66°45'  
160°30'

66°30'  
160°30'

HORIZONTAL SCALE ----- 1:63,360  
 VERTICAL SCALE ON RECONNAISSANCE PROFILES AS SHOWN  
 RECONNAISSANCE ALTITUDE ----- 500' AMT  
 FLIGHT LINE ----- RECON-A ----- 50'  
 MAGNETICS BASED ON ARBITRARY DATUM  
 REGIONAL MAGNETIC GRADIENT NOT REMOVED  
 ESTIMATED TOTAL INTENSITY OF FIELD: 55,200 GAMMAS  
 MEAN INCLINATION: + 77°



PROPERTY OF DGS LIBRARY

Mag. Profiles

HOGATZA TREND ALASKA  
 FIGURE 3, SHEET NUMBER 5  
 LKB 1968

U. S. Geological Survey  
 OPEN FILE REPORT  
 This report is preliminary and has  
 not been edited or reviewed for  
 conformity with Geological Survey  
 standards and nomenclature.

ADGGS  
 REC'D. COLLEGE  
 JUL 2 1969  
 DIV. MINER & GEOLOGY

OF 372