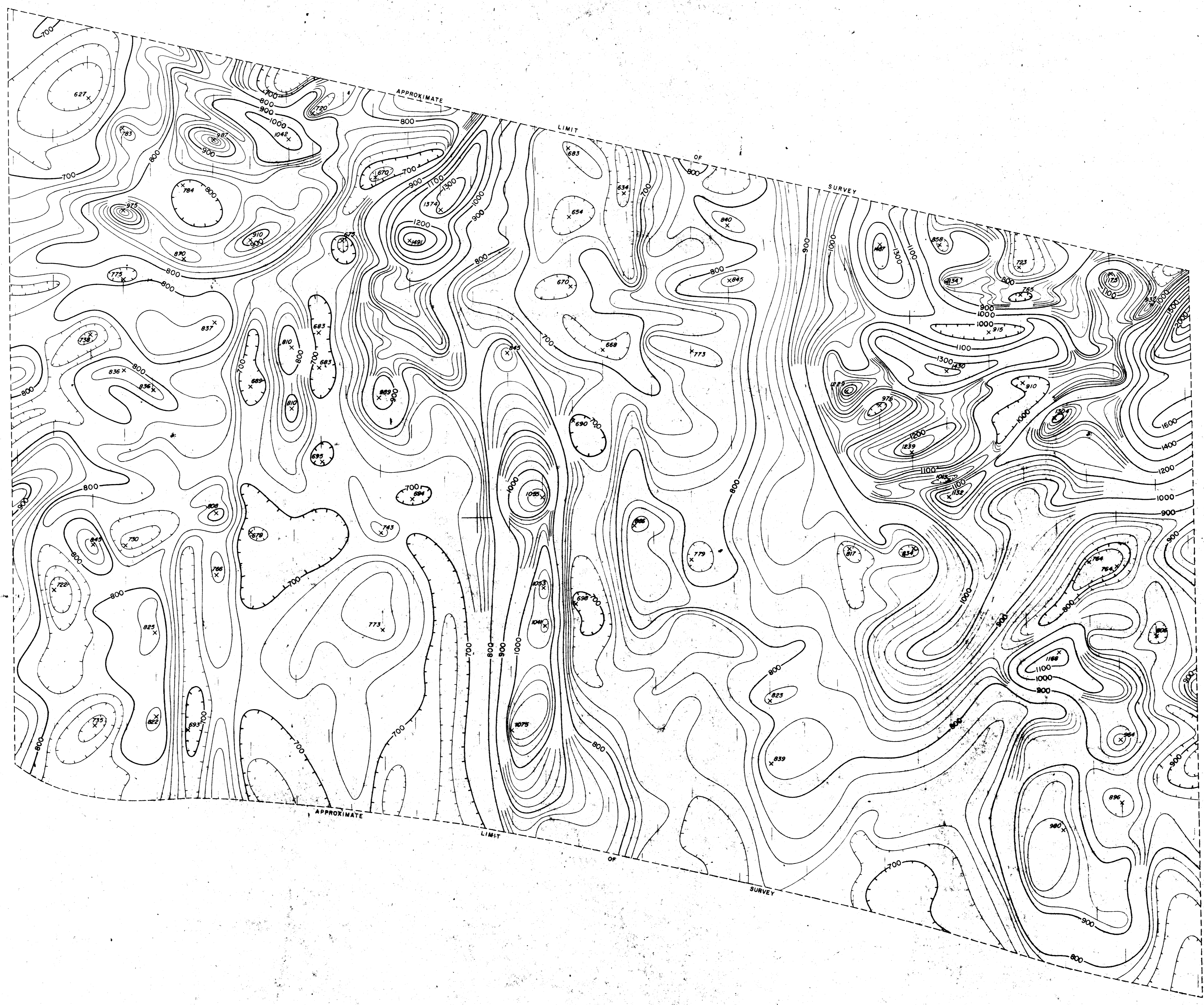


DEPARTMENT OF THE INTERIOR
UNITED STATES GEOLOGICAL SURVEY

166°00'
64°35'

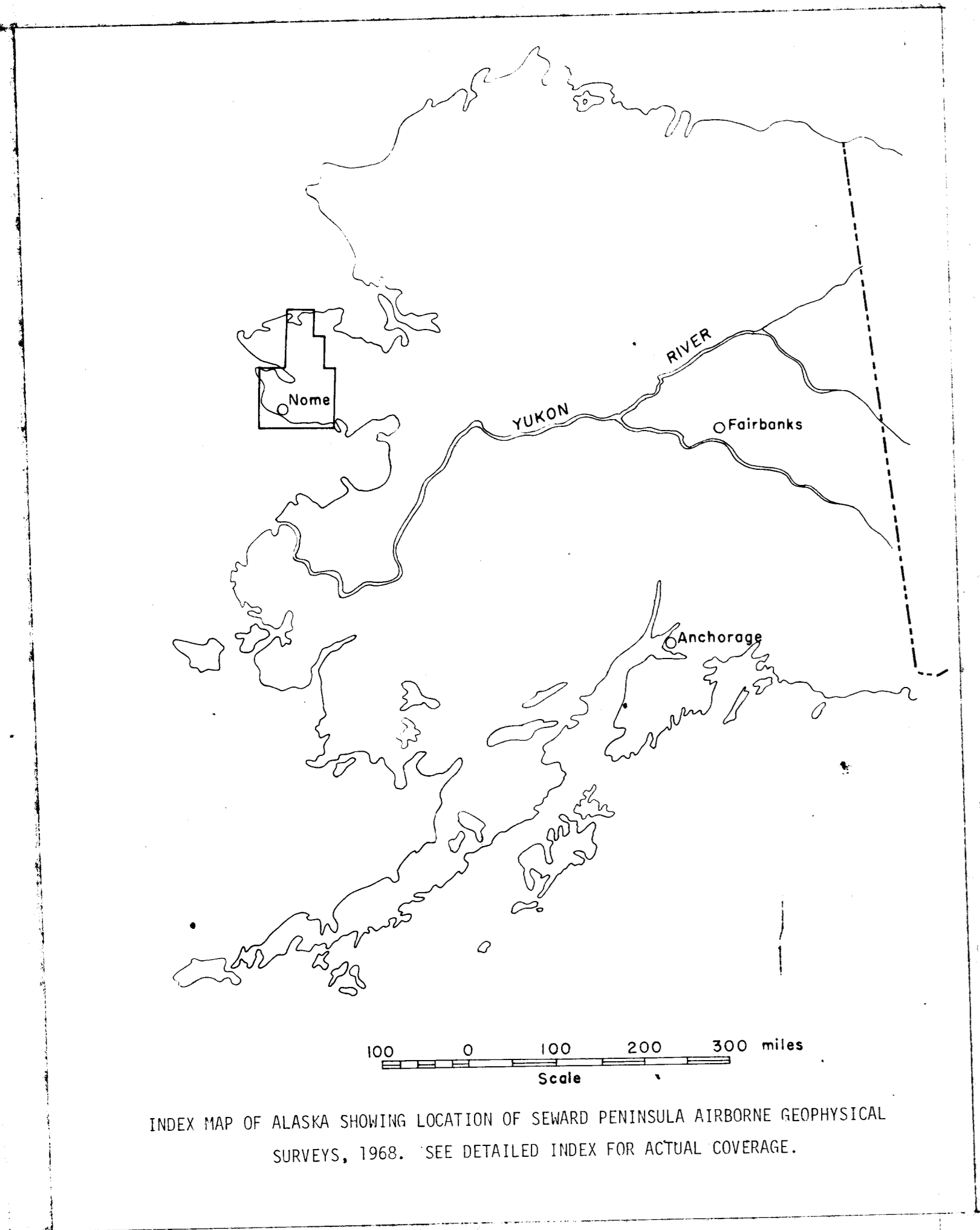
165°45'

165°30'
64°35'

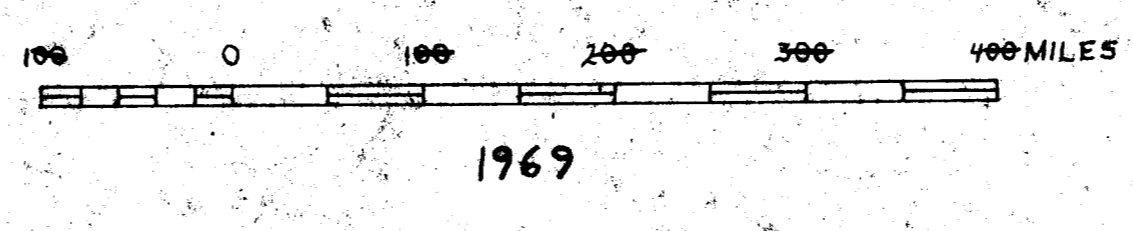


64°30'

64°30'



AIRBORNE GEOPHYSICAL SURVEYS IN SEWARD PENINSULA AREA, ALASKA



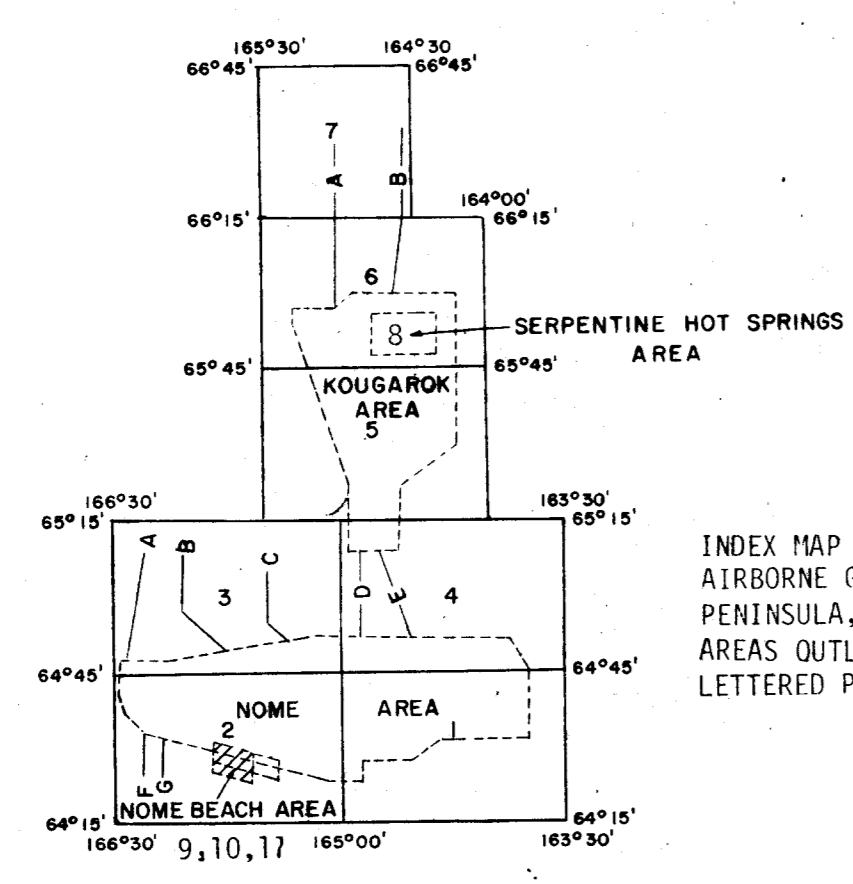
64°25'
166°00'

165°48'

64°25'
165°30'

Flown and compiled by Lockwood, Kessler, and Bartlett, Inc., 1968.

- HORIZONTAL SCALE 1:24,000
- CONTOUR INTERVAL 20 GAMMA
- 20 GAMMA CONTOUR
- 100 GAMMA CONTOUR
- MAGNETIC LOW
- MAGNETIC MAXIMUM/MINIMUM X 247
- SURVEY ALTITUDE 200' ASL
- FLIGHT LINE
- OFFSHORE NAVIGATION BY DOPPLER RADAR
- MAGNETICS BASED ON ARBITRARY DATUM
- REGIONAL MAGNETIC GRADIENT NOT REMOVED
- ESTIMATED TOTAL INTENSITY OF FIELD 55,000 GAMMAS
- MEAN INCLINATION: +75°



AEROMAGNETIC MAP OF PART OF THE
NOME BEACH ALASKA
SHEET NUMBER 11 OF 11
LKB 1968

U.S. GEOLOGICAL SURVEY
Released to open file

This map is preliminary
and has not been edited
or reviewed for conformity
to Geological Survey standards

PROPERTY OF
LIBRARY
STATE OF ALASKA
DIVISION OF MINES
AND GEOLOGY
REC'D. COLLEGE
JUL 28 1969
DIV. MINES & GEOLOGY