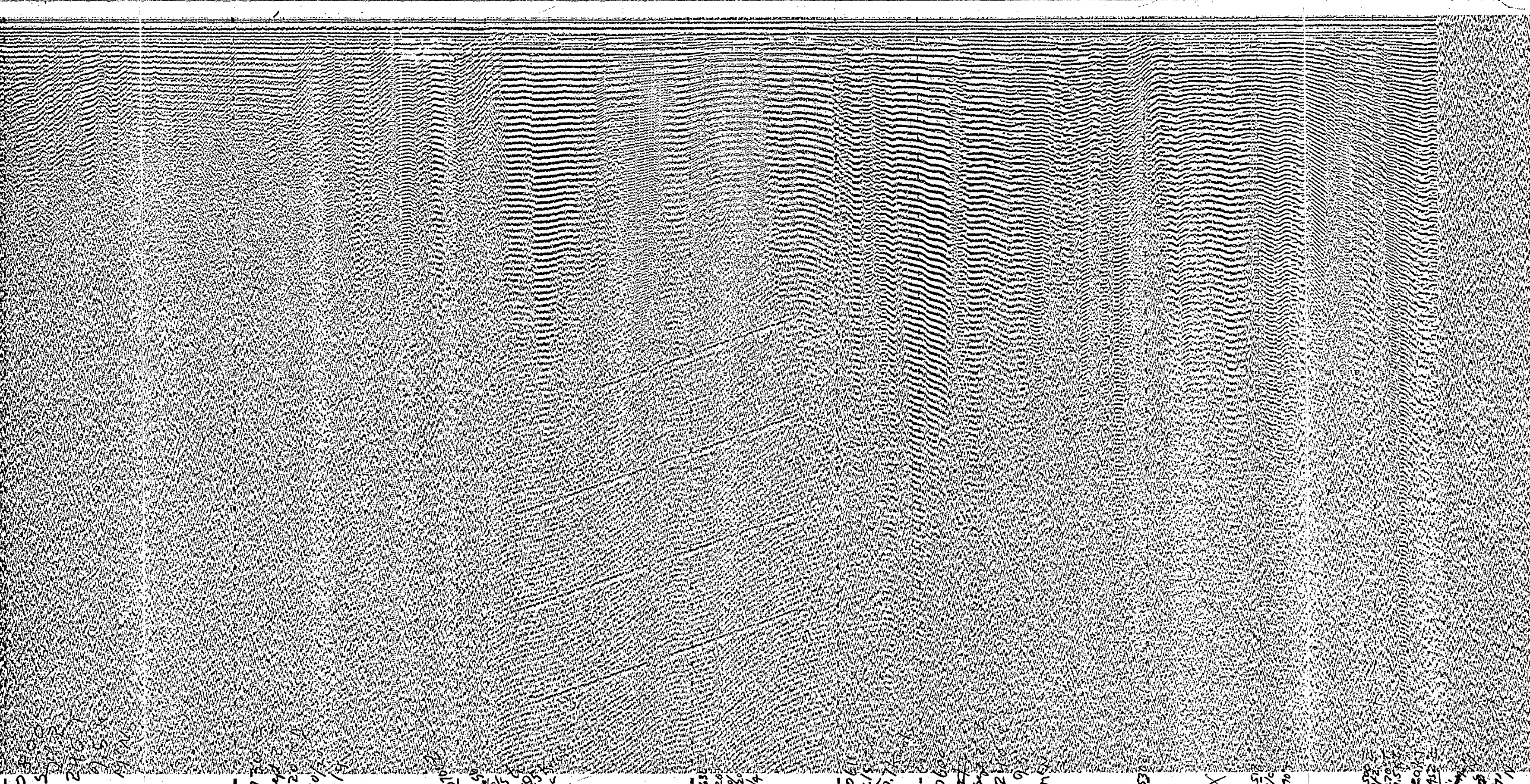


END M'N

2000Z



0450
0500
0510
0520
0530
0540
0550
0600
0610
0620
0630
0640
0650
0700
0710
0720
0730
0740
0750
0800
0810
0820
0830
0840
0850
0900
0910
0920
0930
0940
0950
1000
1010
1020
1030
1040
1050
1100
1110
1120
1130
1140
1150
1200
1210
1220
1230
1240
1250
1300
1310
1320
1330
1340
1350
1400
1410
1420
1430
1440
1450
1500
1510
1520
1530
1540
1550
1600
1610
1620
1630
1640
1650
1700
1710
1720
1730
1740
1750
1800
1810
1820
1830
1840
1850
1900
1910
1920
1930
1940
1950
2000

Log
M-N
Date & Time (Greenwich Mean Time - 2)
September 2, 1969 0452-0801
Course (degrees from true north)
0452-0517: 270° T
0517-0801: 240° T
Speed (knots)
0452-0611: 9.5
0611-0656: 5.7
0656-0801: 9.5
Sweep Rate
4 seconds
Fire Rate
4 seconds
Power (kilojoules)
120
Filter Settings (high and low limits in hertz)
60/20

Profile released without editorial and technical review for conformity to Geological Survey standards.

0939Z (HYDROPHONE ONLY) RUNNING 270°T ALONG ICE PACK

PROPERTY OF DCCS LIBRARY

6961 'ANTHONY WOLLEWATER DIGESTS 'VMS INDEXING
6961 'ANTHONY WOLLEWATER DIGESTS 'VMS INDEXING