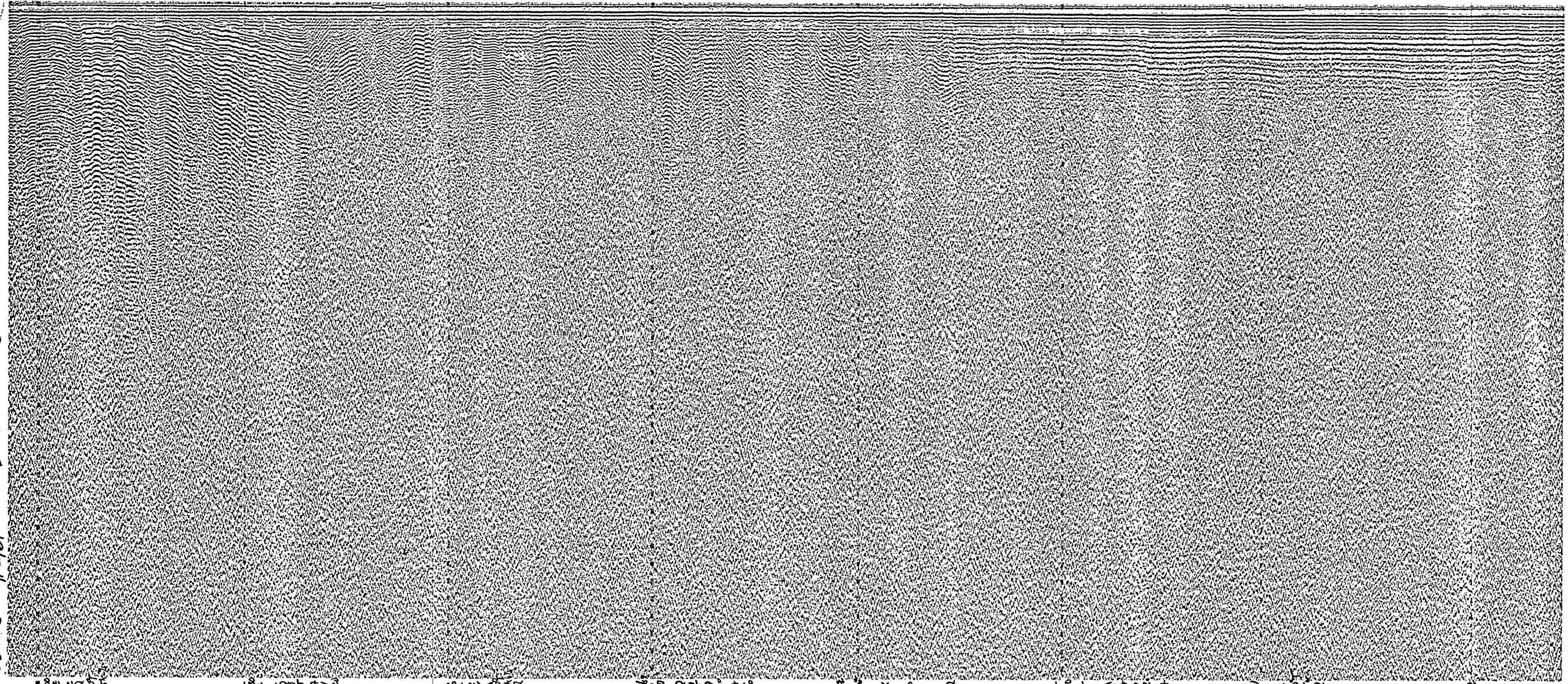


START TURN

1505 hrs 9/2/69 END PQ



2 SEP 69 1117 Z STEADY ON 000° T 9 KNOTS  
 BEGIN LINE PQ  
 4 sec. sweep, shoot rates  
 120 KJ 60/20

Log  
 P-Q  
 Date & Time (Greenwich Mean Time - 2)  
 September 2, 1969 1117-1505  
 Course (degrees from true north)  
 000° T  
 Speed (knots)  
 8.5-9.0  
 Sweep Rate  
 4 seconds  
 Fire Rate  
 4 seconds  
 Power (kilojoules)  
 120  
 Filter Settings (high and low limits in hertz)  
 60/20

Profile released without editorial and technical review for conformity to Geological Survey standards.

PROPERTY OF DOCS LIBRARY