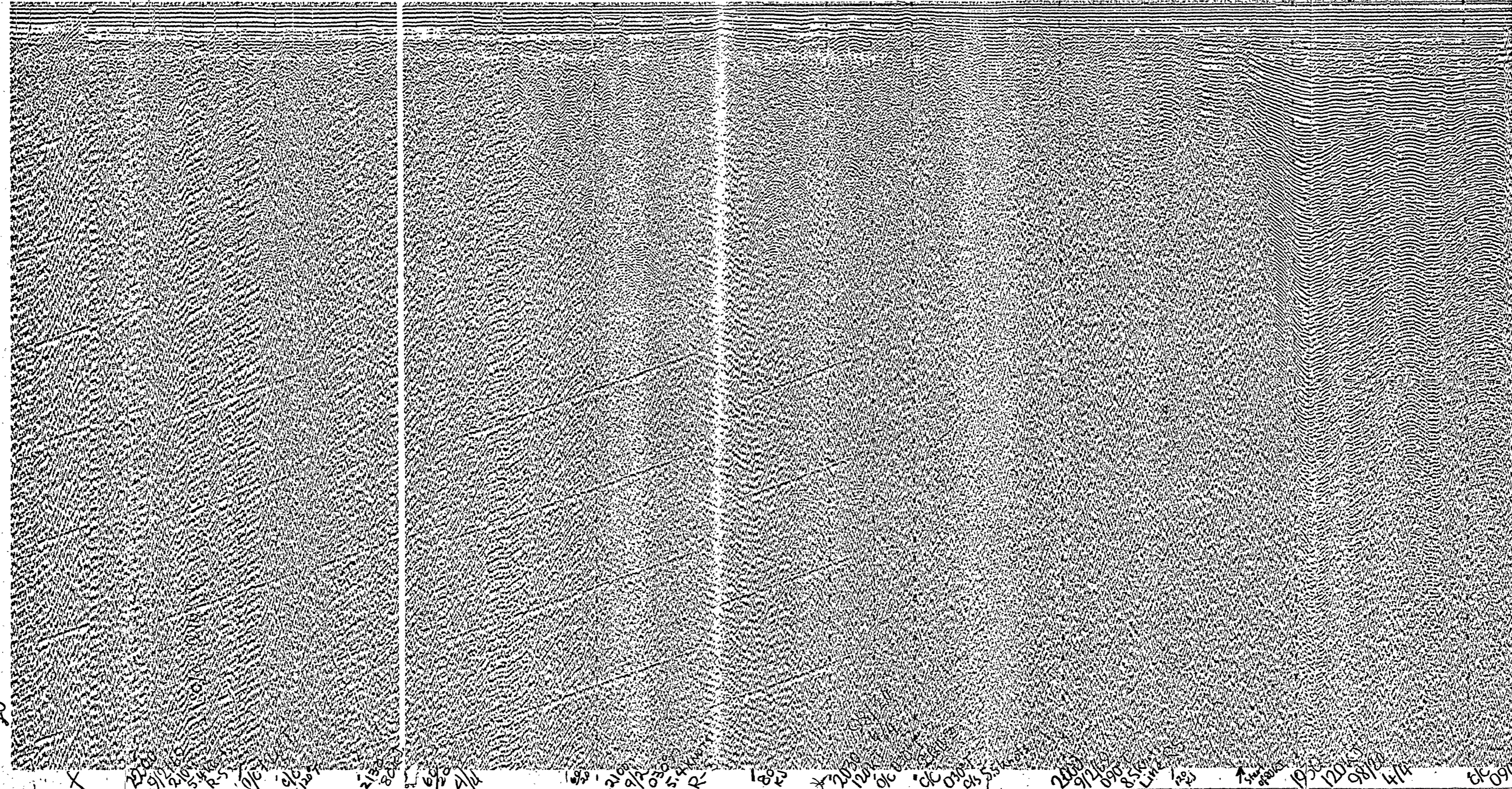


TO 22152 END OF LINE R-S



1903 Steady on 100°T, 8.5 knots Start of Line RS

Log R-S

Date & Time (Greenwich Mean Time - 2)  
 September 2, 1969 1903-2215

Course (degrees from true north)  
 1903-1904: 100°T      2138-2150: 100°T  
 1904-2019: 090°T      2150-2215: 210°T  
 2019-2138: 090°T

Speed (knots)  
 1903-1904: 8.5      2138-2150: 5.4  
 1904-2019: 8.5      2150-2215: 5.4  
 2019-2138: 5.4-5.5

Sweep Rate  
 4 seconds

Fire Rate  
 4 seconds

Power (kilojoules)  
 120, 80

Filter Settings (high and low limits in hertz)  
 98/20, 60/20

Profile released without editorial and technical review for conformity to Geological Survey standards.

PROPERTY OF DGC'S LIBRARY