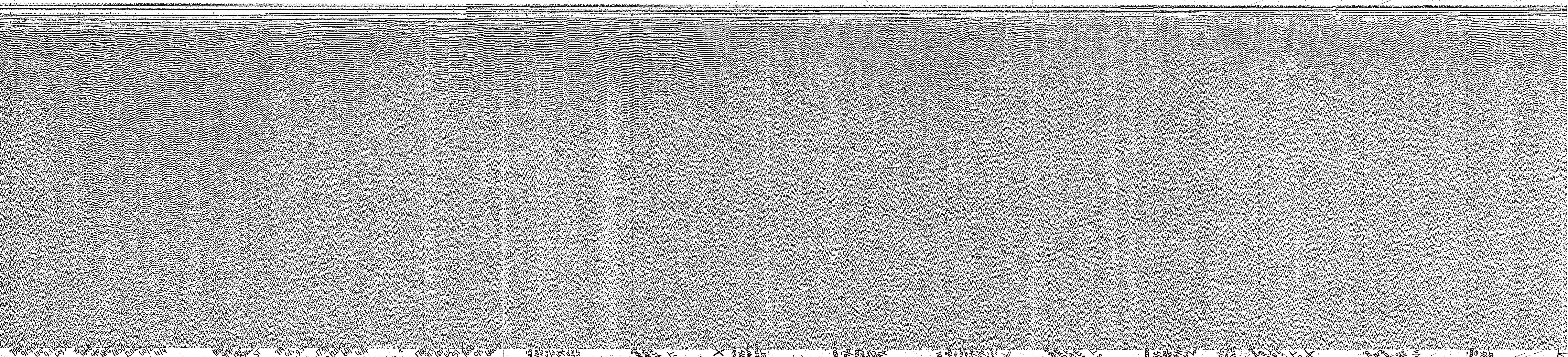


End Line ST 1106Z 1106Z 9/3/69



1900 9/3/69 1800 9/3/69 1700 9/3/69 1600 9/3/69 1500 9/3/69 1400 9/3/69 1300 9/3/69 1200 9/3/69 1100 9/3/69 1000 9/3/69 900 9/3/69 800 9/3/69 700 9/3/69 600 9/3/69 500 9/3/69 400 9/3/69 300 9/3/69 200 9/3/69 100 9/3/69

120 kT
60/20
4/4
0-3000 m

1/2 180° T
9/3 6.2 knots ~

Set up for RUN ST
9/3/69

ST
Date & Time (Greenwich Mean Time - 3)
September 3, 1969 1130-1906
Course (degrees from true north)
180° T
Speed (knots) 1650-1742: 6.0
1742-1906: 9.5
Sweep Rate
4 seconds
Fire Rate
4 seconds
Power (kilowatts)
120
Filter Settings (High and Low limits in
hertz)
60/20

Profile released without editorial and
technical review for conformity to Geological
Survey standards.

PROPERTY OF DECS LIBRARY