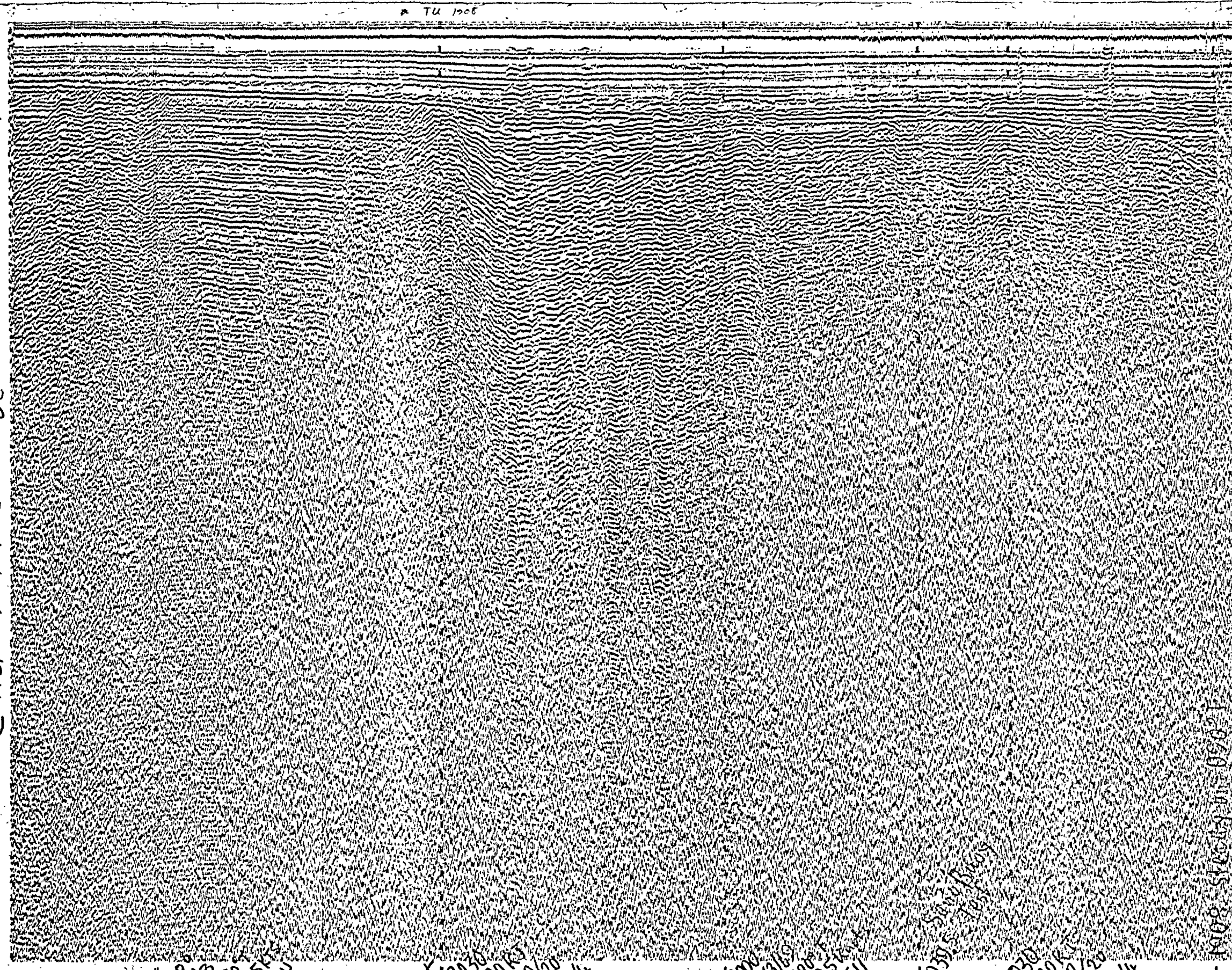


Steam to point V without
streaming gear
End Line T U



2100
9/3
0907
9.5KT
TU

X-2030
120KJ
60/20
4/4

2000
9/3/69
0907
9.5KT
TU

1930.5
Start Time

1930
120KJ
60/20
4/4

- 1908 - Steam to point V - 0907

Start Line T&U Course 090°T 9.5 knots 9/3/69
120KJ 60/20 Filters 4/4 sweep + firing rate
POLAR PROFILE

Log	T-U
Date & Time (Greenwich Mean Time - 2)	September 3, 1969 1908-2115
Course (degrees from true north)	090°T
Speed (knots)	9.5
Sweep Rate	4 seconds
Fire Rate	4 seconds
Power (kilojoules)	120
Filter Settings (high and low limits in hertz)	60/20

Profile released without editorial and technical review for conformity to Geological Survey standards.

PROPERTY OF DSCS LIBRARY