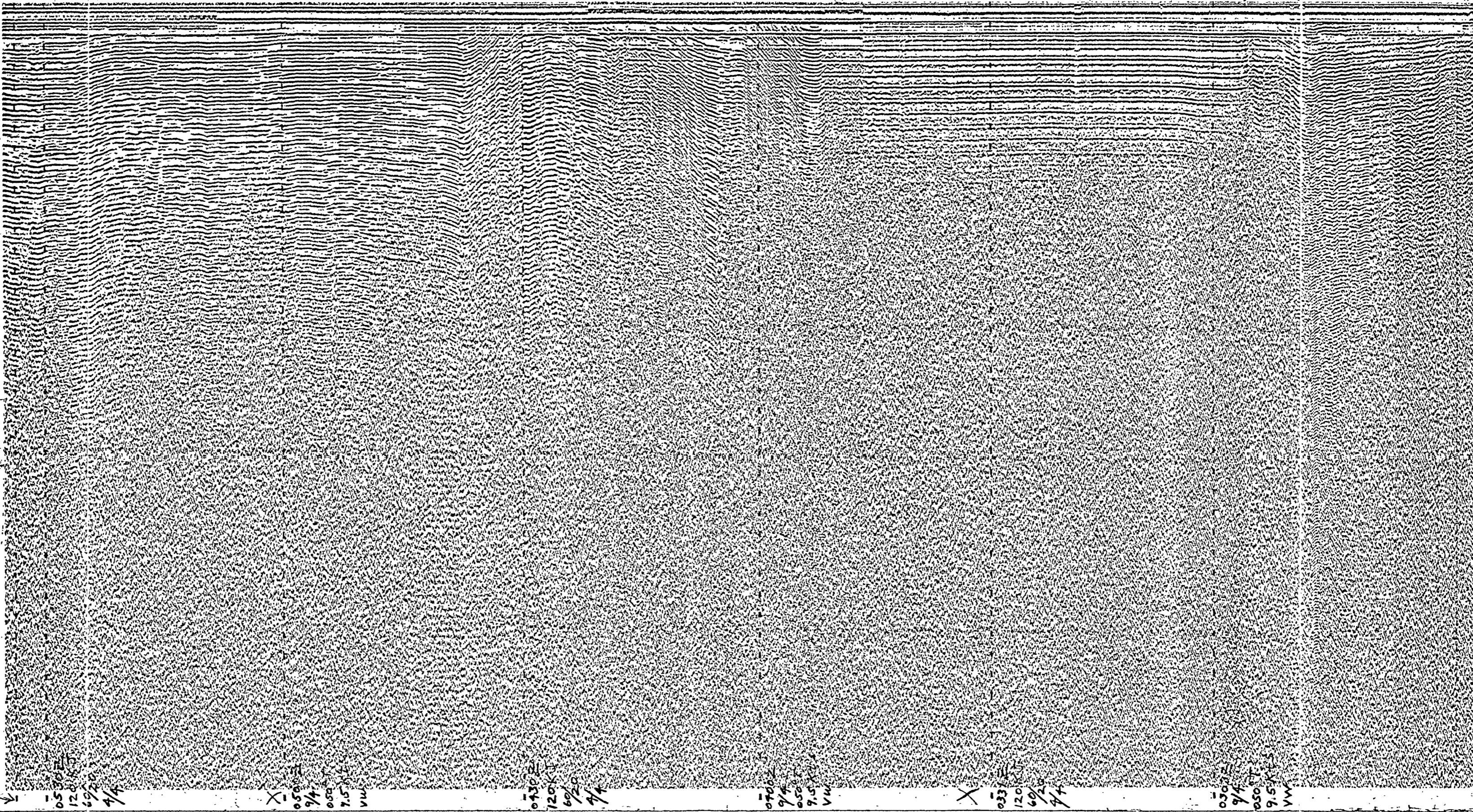


140° T
0534Z ENO LINE VW Changing Course + SPEED TO 55 KNOTS



0534Z
120K
60/20
4/4

X
050
9/4
050
9.5
VW

0730Z
120K
60/20
4/4

0700Z
9/4
050
9.5
VW

X
0830Z
120K
60/20
4/4

0300Z
9/4
050
9.5
VW

0/c 050 9T
0/c 9.5 knts

START LINE VW @ 0233 HRS Z
9/4/69 120 KJ
60/20 4/4

Log
V-W
Date & Time (Greenwich Mean Time - 2)
September 4, 1969 0233-0534
Course (degrees from true north)
050° T
Speed (knots)
9.5
Sweep Rate
4 seconds
Fire Rate
4 seconds
Power (kilojoules)
120
Filter Settings (high and low limits in hertz)
60/20

Profile released without editorial and technical review for conformity to Geological Survey standards.

PROPERTY OF U.S. GEOLOGICAL SURVEY