

U.S. GEOLOGICAL SURVEY  
OPEN FILE MAP

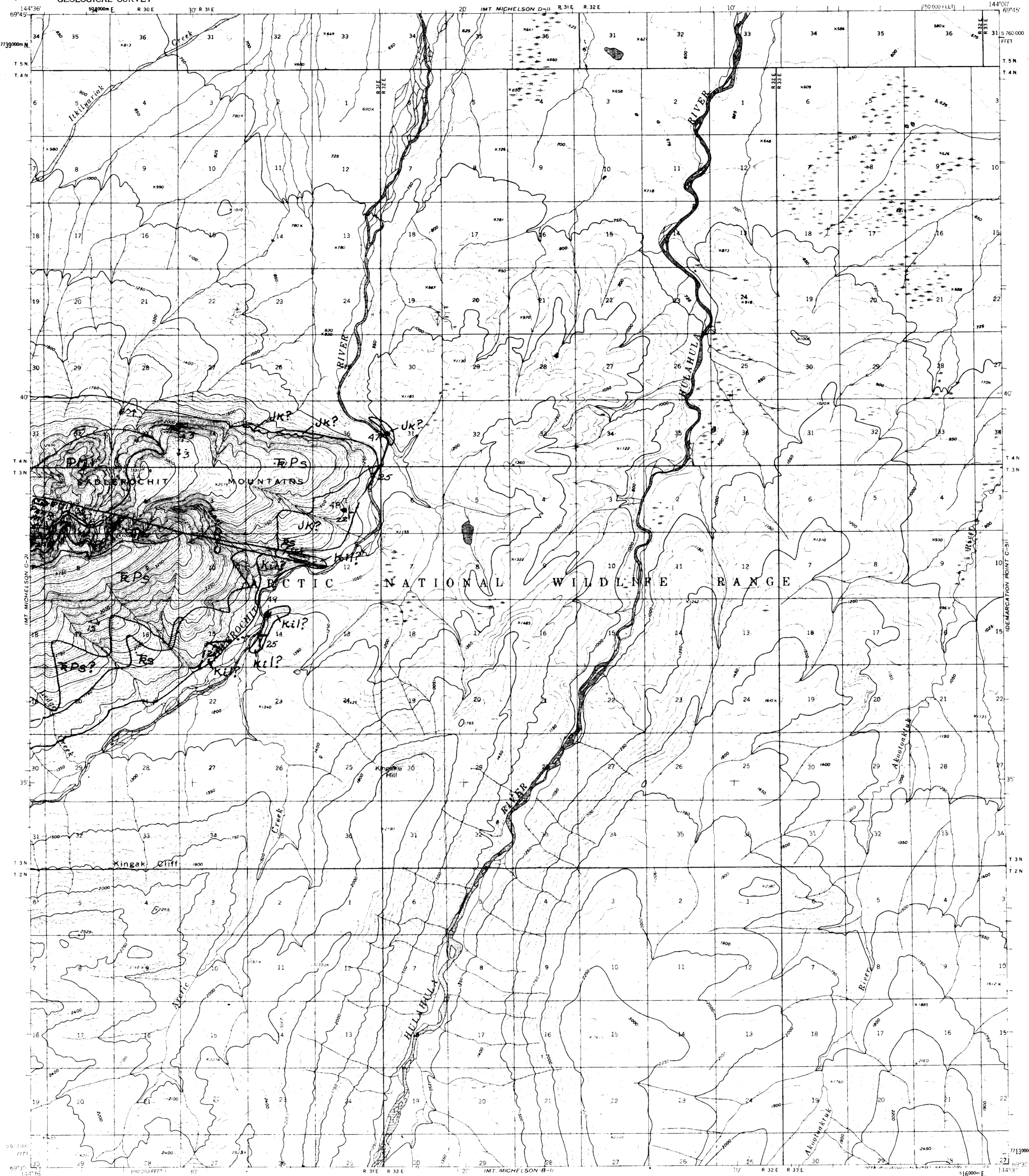
GEOPHYSICAL INSTITUTE LIBRARY  
UNIVERSITY OF ALASKA

MT. MICHELSON (C-1) QUADRANGLE  
ALASKA  
1:63,360 SERIES (TOPOGRAPHIC)

DEMARCATION POINT D-9

Report  
DE  
75  
065  
no. 70-  
273  
C.2

UNITED STATES  
DEPARTMENT OF THE INTERIOR  
GEOLOGICAL SURVEY



Made by the Army, Maj. Simon  
Edwin and published by the Geological Survey  
Control by USCGS and USLE  
Topography by photogrammetric methods from aerial photographs  
taken 1955 field annotated 1955. Map not field checked  
Universal Transverse Mercator projection, 1927 North American datum  
10 000 meter interval based on Alaska coordinate system, zone 5  
10000 meter Universal Transverse Mercator grid ticks  
zone 5; shown in blue  
Land lines represent unimproved and unmarked locations  
predetermined by the Bureau of Land Management  
Folio 10000-10000-10000-10000  
Swamps as shown in brown and yellow and  
usuality of the relief as interpreted from aerial photographs

SCALE 1:63,360

ROAD CLASSIFICATION  
No roads or trails in this area

FOR SALE BY U.S. GEOLOGICAL SURVEY  
FAIRBANKS, ALASKA DENVER 25, COLORADO WASHINGTON 25, D.C.  
A FOLDER DESCRIBING TOPOGRAPHIC MAPS AND SYMBOLS IS AVAILABLE ON REQUEST

MT. MICHELSON (C-1), ALASKA  
MAY 1954  
1954

ADVANCE PROOF  
SUBJECT TO CORRECTION  
WORKING COMPOSITE

FROM THE VAULT

LINE MAP  
1:63,360  
1954